

ROCK PORT R-II - HIGH SCHOOL GYM ADDITION



ROCK PORT R-II SCHOOL DISTRICT

HTK ARCHITECTS, PA

CFS ENGINEERS

BOB D. CAMPBELL

BGR CONSULTING ENGINEERS

COST PLANNING AND MANAGEMENT INTERNATIONAL, INC. (CPMI)

OWNER

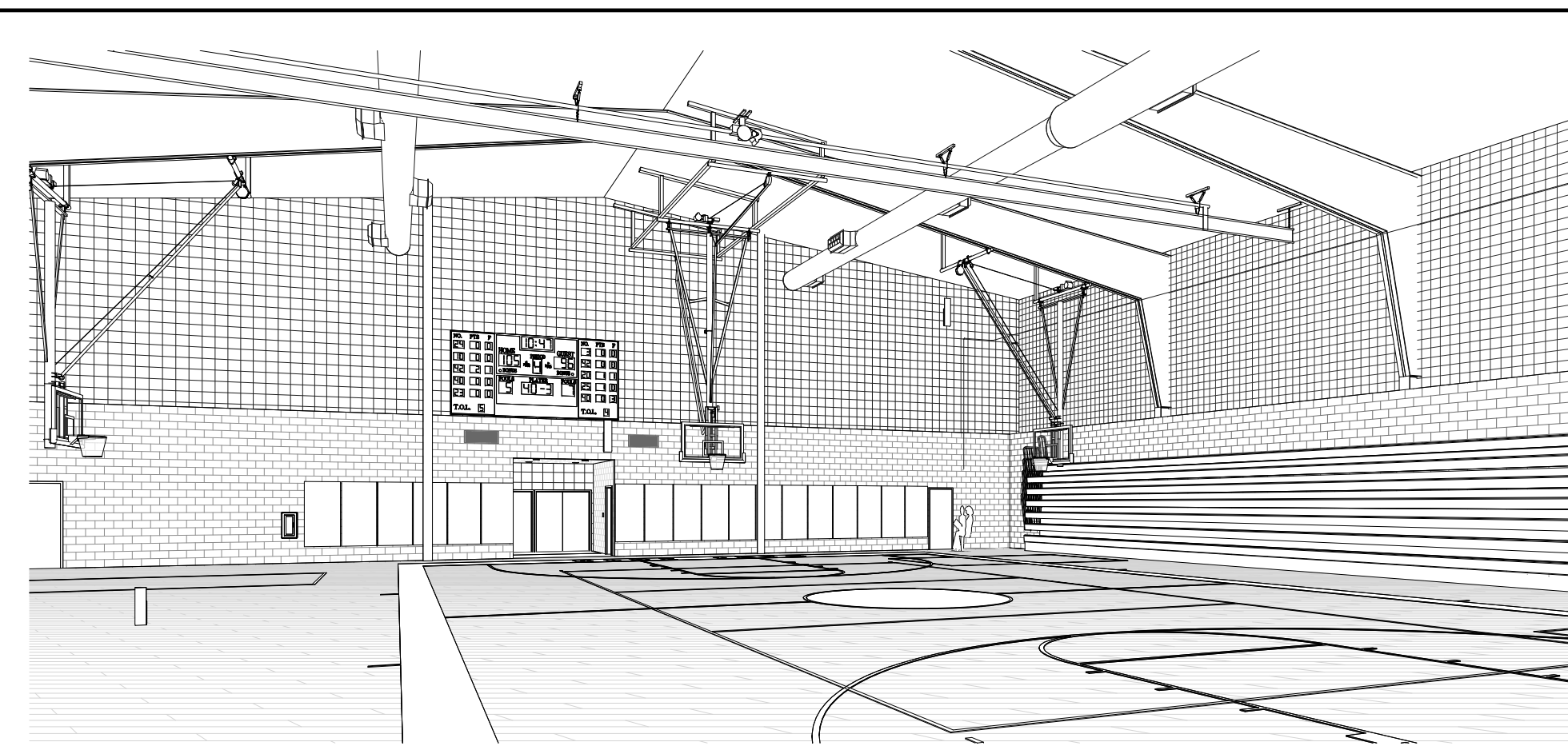
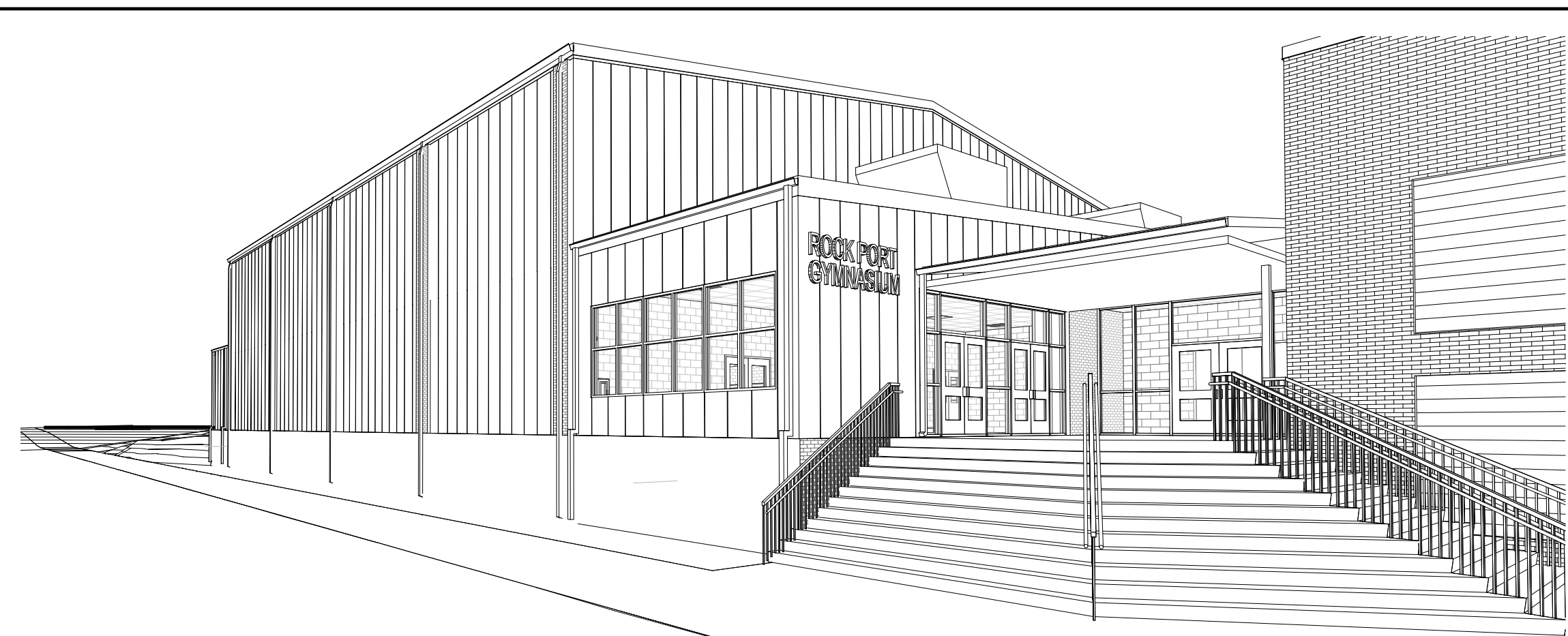
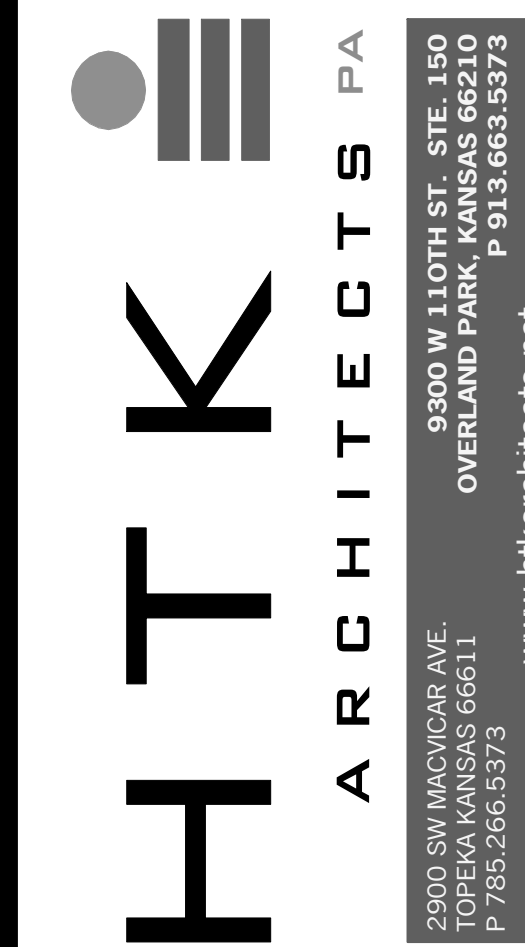
ARCHITECT

CIVIL ENGINEER

STRUCTURAL ENGINEER

MECHANICAL / ELECTRICAL / PLUMBING ENGINEER

CONSTRUCTION MANAGER



SHEET INDEX

INFORMATION

- G101 TITLE SHEET
- G201 INFORMATION
- G301 CODE COMPLIANCE PLAN

CIVIL

- C100 SITE & UTILITY PLAN
- C101 DEMOLITION SITE PLAN
- C200 GRADING & EROSION CONTROL PLAN

ARCHITECTURAL

- D100 DEMOLITION FLOOR PLAN
- A101 ARCHITECTURAL FLOOR PLAN
- A102 ENLARGED FLOOR PLANS & ELEVATIONS
- A201 BUILDING ELEVATIONS
- A202 INTERIOR ELEVATIONS
- A301 BUILDING SECTIONS
- A302 BUILDING SECTIONS
- A303 WALL SECTIONS
- A304 WALL SECTIONS
- A305 WALL SECTIONS
- A306 DETAILS
- A307 DETAILS
- A401 ROOF PLAN & DETAILS
- A402 ROOF DETAILS
- A501 DOOR, FRAME, & WINDOW SCHEDULES & DETAILS
- A601 REFLECTED CEILING PLANS
- A701 FINISH FLOOR PLAN
- FE100 FIXED EQUIPMENT PLAN

STRUCTURAL

- S100 GENERAL NOTES & SECTIONS
- S101 FOUNDATION PLAN
- S500 FOUNDATIONS SECTIONS

MECHANICAL

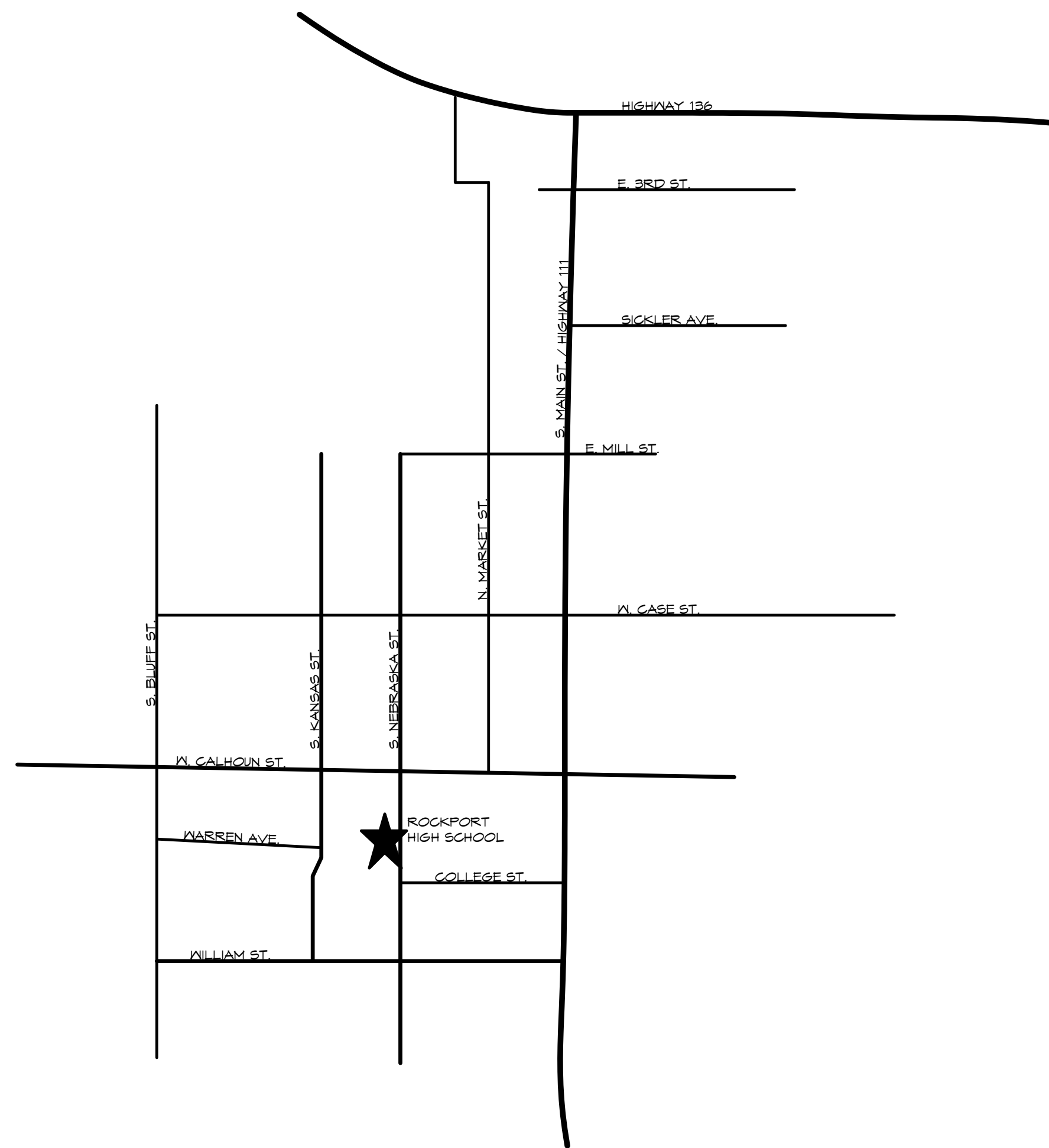
- MP101 MECHANICAL & PLUMBING DEMOLITION FLOOR PLAN
- M101 FLOOR PLAN - MECHANICAL
- M201 DETAILS
- M301 SCHEDULES

PLUMBING

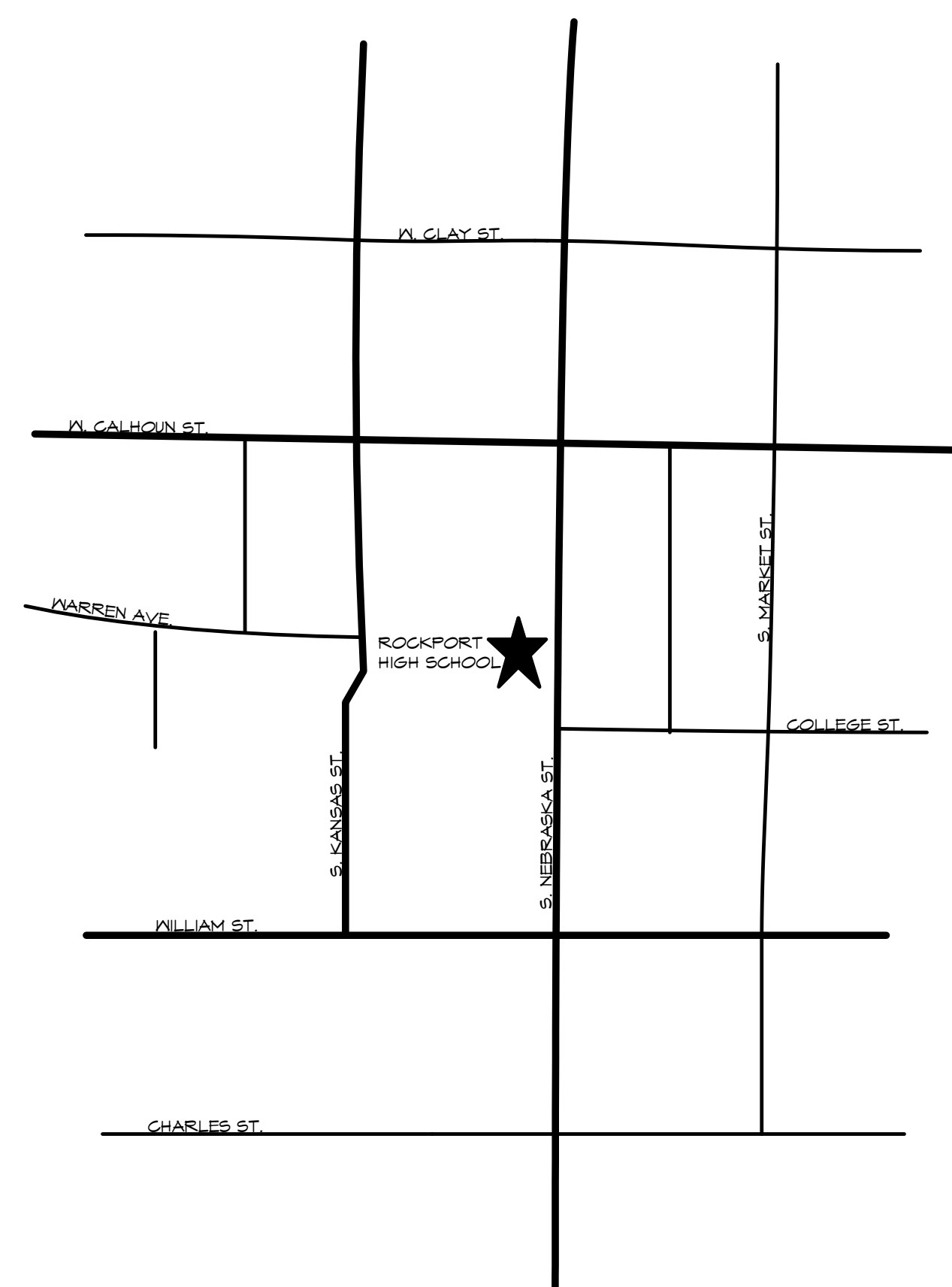
- P101 FLOOR PLAN - PLUMBING
- P102 ENLARGED PLUMBING PLANS
- P201 DETAILS & SCHEDULES

ELECTRICAL

- DE101 ELECTRICAL DEMOLITION FLOOR PLAN
- E101 ELECTRICAL PLAN - POWER
- E102 ELECTRICAL PLAN - LIGHTING
- E200 ELECTRICAL SCHEDULES
- E201 ELECTRICAL DETAILS



VICINITY MAP



SITE LOCATION MAP

DATE:
• SEPTEMBER 2, 2014

REVISED DATE:



ROCK PORT R-2 - HIGH SCHOOL GYMNASIUM ADDITION

ROCK PORT R2 SCHOOLS

ROCK PORT R2 - ROCK PORT HIGH SCHOOL - 600 S. NEBRASKA ST., ROCK PORT, MO

SHEET CONTENTS:
• TITLE SHEET



HTK PROJECT NUMBER:
• 1307.04-002

SHEET NUMBER:

G101

CONTRACT DOCUMENTS