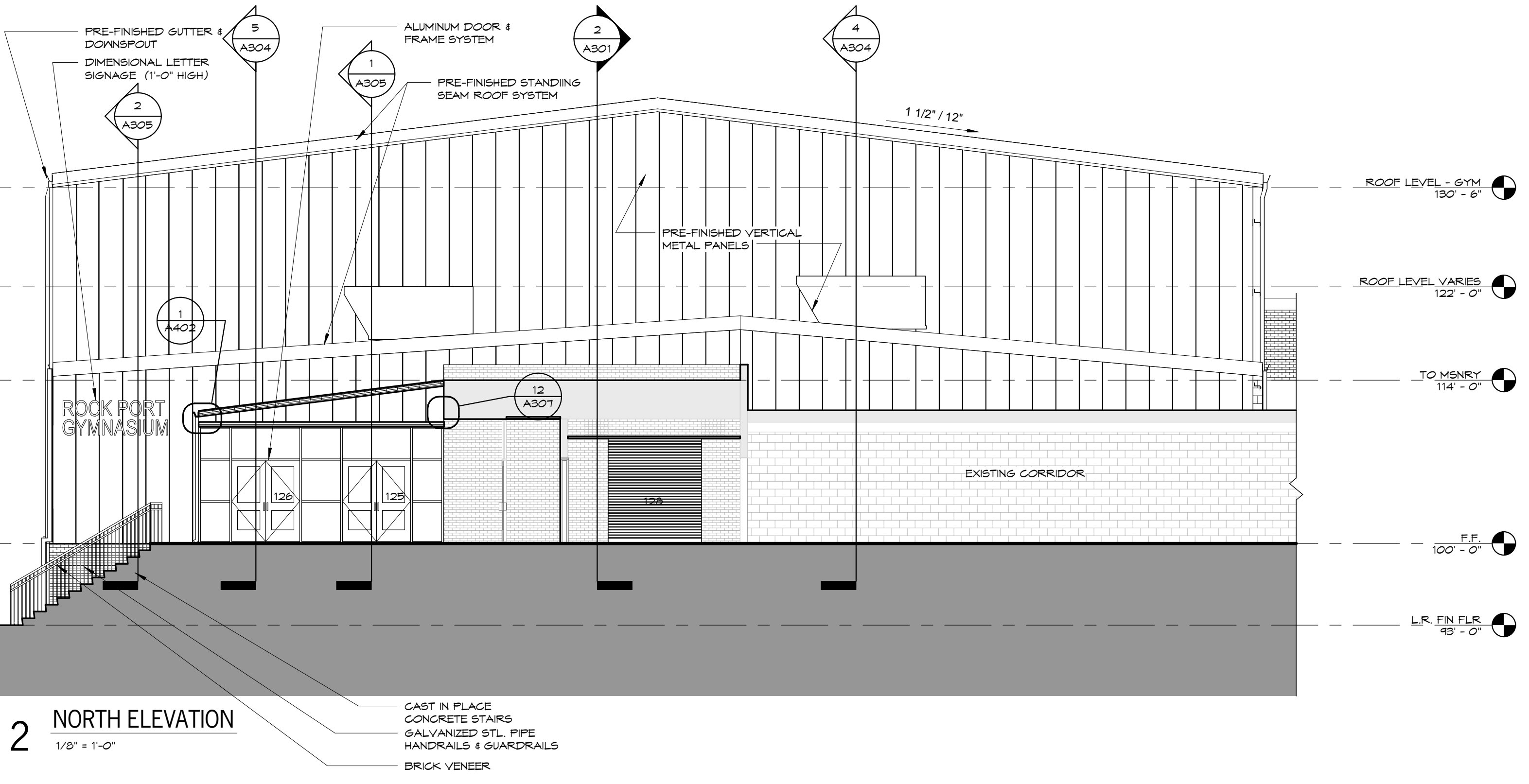
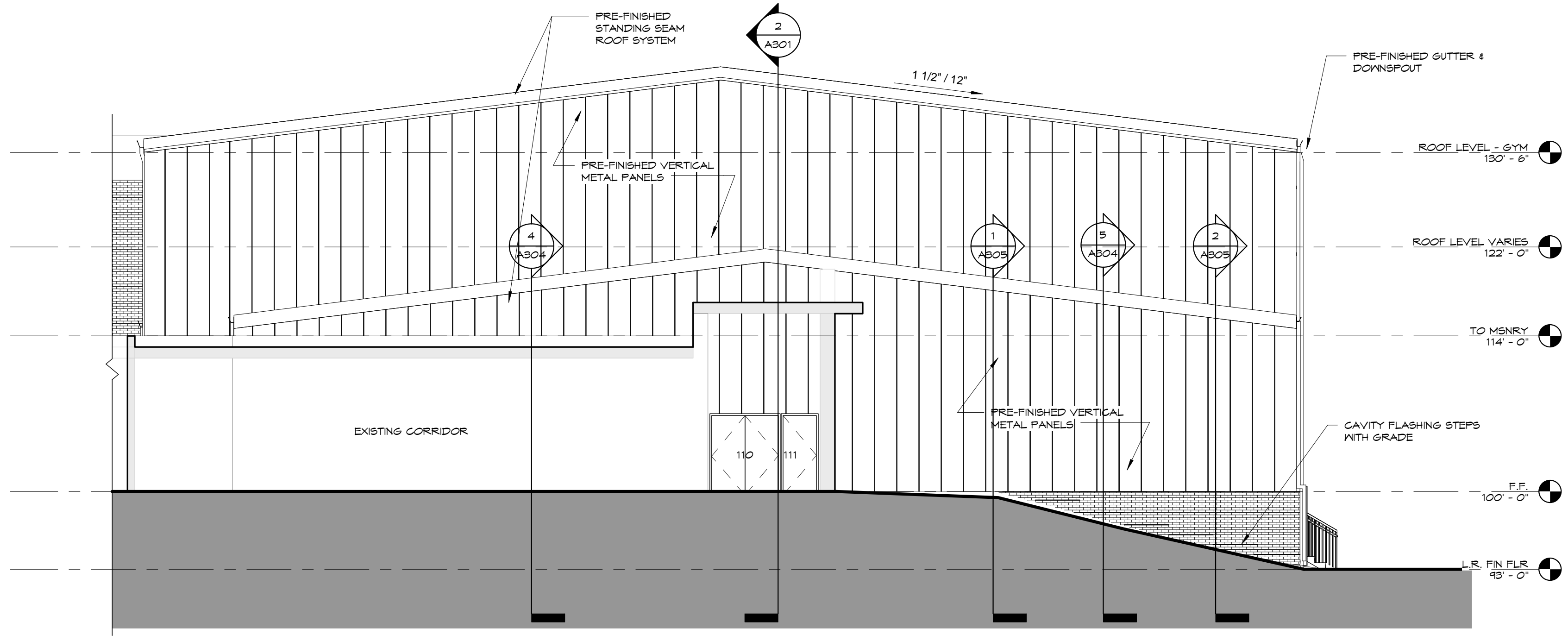


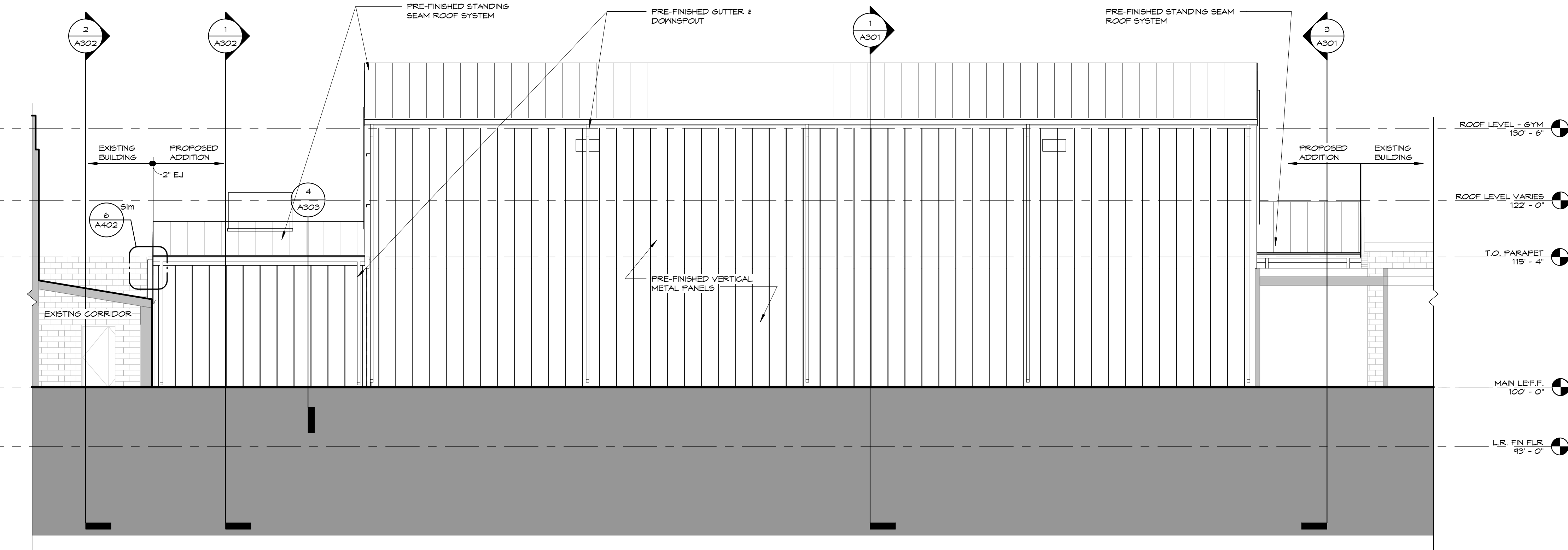
1 EAST ELEVATION
 1/8" = 1'-0"



2 NORTH ELEVATION
 1/8" = 1'-0"



3 SOUTH ELEVATION
 1/8" = 1'-0"



4 WEST ELEVATION
 1/8" = 1'-0"

DATE: ● SEPTEMBER 2, 2014
 REVISED DATE:

ROCK PORT R-2 - HIGH SCHOOL GYMNASIUM ADDITION
 ROCK PORT R2 SCHOOLS
 ROCK PORT R2 - ROCK PORT HIGH SCHOOL - 600 S. NEBRASKA ST. - ROCK PORT, MO

SHEET CONTENTS:
 ● BUILDING ELEVATIONS
 HTK PROJECT NUMBER:
 ● 1307.04-002
 SHEET NUMBER:
A201
 CONTRACT DOCUMENTS