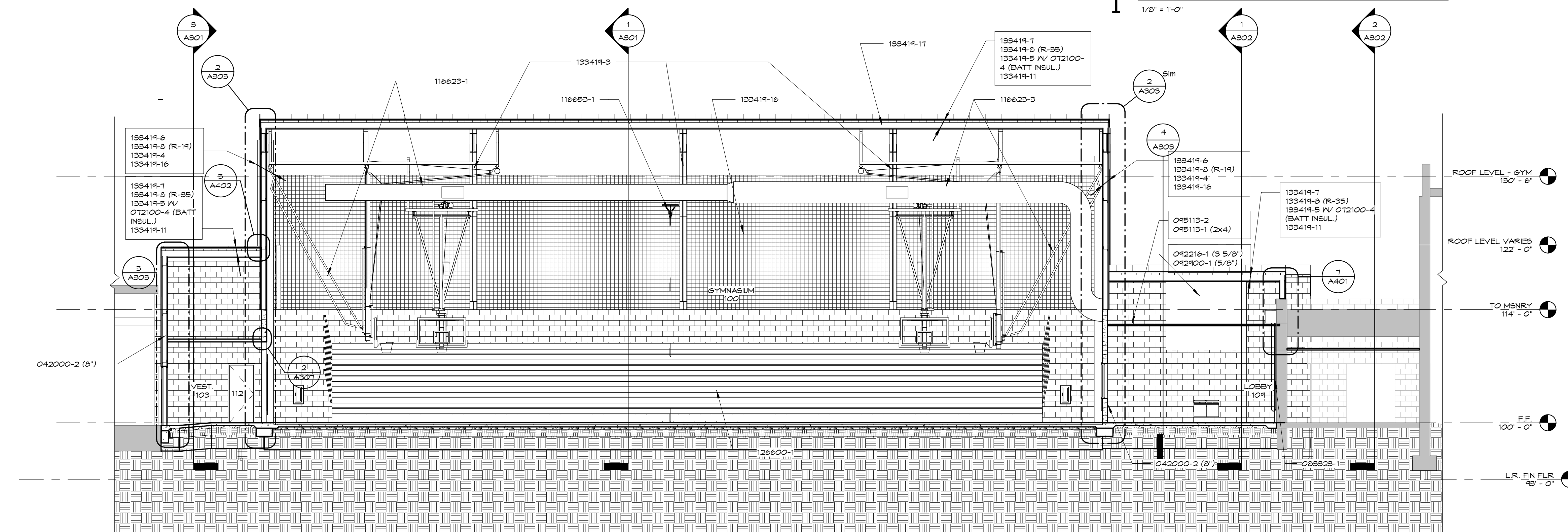
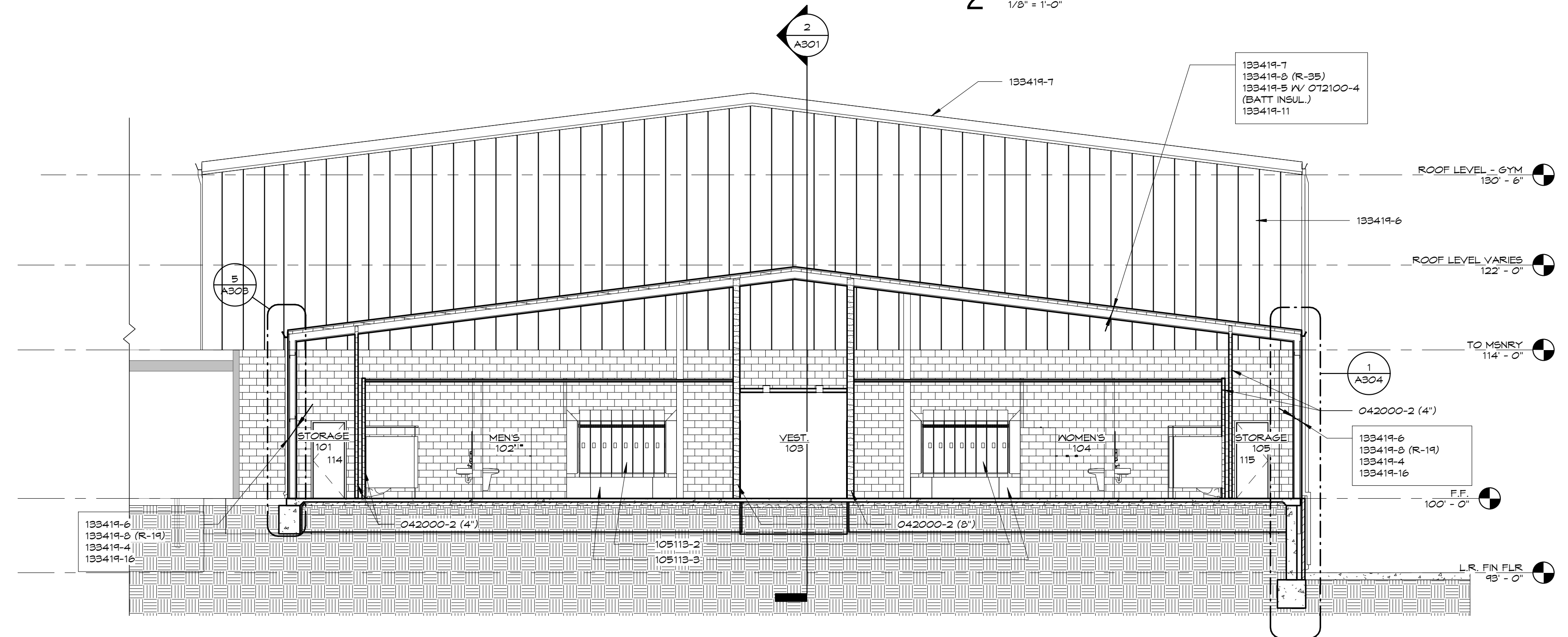


1 E-W SECTION THROUGH GYM LOOKING SOUTH
1/8" = 1'-0"



2 N-S SECTION THROUGH GYM LOOKING WEST
1/8" = 1'-0"



3 E-W SECTION THROUGH LOCKERS LOOKING NORTH
1/8" = 1'-0"

KEYNOTES

Note: Keynotes are drawn from a master list. They may not be sequentially numbered. Sizes (ID, 2x4) or other info. following keynote of drawing indicates criteria for those materials. Questions and/or may differ from spec. master list.

| | | | | | |
|--------|------|------------------------|--------|------|-------------------------|
| 035000 | -1 | CONCRETE STRUCTURE | 03115 | -1 | HOLLOW METAL DOOR |
| | -2 | CONCRETE FLOOR SLAB | | -2 | INSULATED METAL PANEL |
| | -3 | VAPOR BARRIER | | -3 | FRAME ANCHOR |
| | -4 | REINFORCING FABRIC | | -4 | LOUVER |
| | -5 | STEEL REINFORCING BAR | 033323 | -5 | PLASTER BOARD |
| | -6 | CONCRETE JOINT | | -6 | CORUGATED GALVALUM DOOR |
| | -7 | ALUMINUM ENTRANCE DOOR | 04410 | -7 | ALUMINUM ENTRANCE DOOR |
| | -8 | ALUMINUM ENTRANCE DOOR | | -8 | ALUMINUM ENTRANCE DOOR |
| | -9 | ALUMINUM ENTRANCE DOOR | | -9 | ALUMINUM ENTRANCE DOOR |
| | -10 | ALUMINUM ENTRANCE DOOR | | -10 | ALUMINUM ENTRANCE DOOR |
| | -11 | ALUMINUM ENTRANCE DOOR | | -11 | ALUMINUM ENTRANCE DOOR |
| | -12 | ALUMINUM ENTRANCE DOOR | | -12 | ALUMINUM ENTRANCE DOOR |
| | -13 | ALUMINUM ENTRANCE DOOR | | -13 | ALUMINUM ENTRANCE DOOR |
| | -14 | ALUMINUM ENTRANCE DOOR | | -14 | ALUMINUM ENTRANCE DOOR |
| | -15 | ALUMINUM ENTRANCE DOOR | | -15 | ALUMINUM ENTRANCE DOOR |
| | -16 | ALUMINUM ENTRANCE DOOR | | -16 | ALUMINUM ENTRANCE DOOR |
| | -17 | ALUMINUM ENTRANCE DOOR | | -17 | ALUMINUM ENTRANCE DOOR |
| | -18 | ALUMINUM ENTRANCE DOOR | | -18 | ALUMINUM ENTRANCE DOOR |
| | -19 | ALUMINUM ENTRANCE DOOR | | -19 | ALUMINUM ENTRANCE DOOR |
| | -20 | ALUMINUM ENTRANCE DOOR | | -20 | ALUMINUM ENTRANCE DOOR |
| | -21 | ALUMINUM ENTRANCE DOOR | | -21 | ALUMINUM ENTRANCE DOOR |
| | -22 | ALUMINUM ENTRANCE DOOR | | -22 | ALUMINUM ENTRANCE DOOR |
| | -23 | ALUMINUM ENTRANCE DOOR | | -23 | ALUMINUM ENTRANCE DOOR |
| | -24 | ALUMINUM ENTRANCE DOOR | | -24 | ALUMINUM ENTRANCE DOOR |
| | -25 | ALUMINUM ENTRANCE DOOR | | -25 | ALUMINUM ENTRANCE DOOR |
| | -26 | ALUMINUM ENTRANCE DOOR | | -26 | ALUMINUM ENTRANCE DOOR |
| | -27 | ALUMINUM ENTRANCE DOOR | | -27 | ALUMINUM ENTRANCE DOOR |
| | -28 | ALUMINUM ENTRANCE DOOR | | -28 | ALUMINUM ENTRANCE DOOR |
| | -29 | ALUMINUM ENTRANCE DOOR | | -29 | ALUMINUM ENTRANCE DOOR |
| | -30 | ALUMINUM ENTRANCE DOOR | | -30 | ALUMINUM ENTRANCE DOOR |
| | -31 | ALUMINUM ENTRANCE DOOR | | -31 | ALUMINUM ENTRANCE DOOR |
| | -32 | ALUMINUM ENTRANCE DOOR | | -32 | ALUMINUM ENTRANCE DOOR |
| | -33 | ALUMINUM ENTRANCE DOOR | | -33 | ALUMINUM ENTRANCE DOOR |
| | -34 | ALUMINUM ENTRANCE DOOR | | -34 | ALUMINUM ENTRANCE DOOR |
| | -35 | ALUMINUM ENTRANCE DOOR | | -35 | ALUMINUM ENTRANCE DOOR |
| | -36 | ALUMINUM ENTRANCE DOOR | | -36 | ALUMINUM ENTRANCE DOOR |
| | -37 | ALUMINUM ENTRANCE DOOR | | -37 | ALUMINUM ENTRANCE DOOR |
| | -38 | ALUMINUM ENTRANCE DOOR | | -38 | ALUMINUM ENTRANCE DOOR |
| | -39 | ALUMINUM ENTRANCE DOOR | | -39 | ALUMINUM ENTRANCE DOOR |
| | -40 | ALUMINUM ENTRANCE DOOR | | -40 | ALUMINUM ENTRANCE DOOR |
| | -41 | ALUMINUM ENTRANCE DOOR | | -41 | ALUMINUM ENTRANCE DOOR |
| | -42 | ALUMINUM ENTRANCE DOOR | | -42 | ALUMINUM ENTRANCE DOOR |
| | -43 | ALUMINUM ENTRANCE DOOR | | -43 | ALUMINUM ENTRANCE DOOR |
| | -44 | ALUMINUM ENTRANCE DOOR | | -44 | ALUMINUM ENTRANCE DOOR |
| | -45 | ALUMINUM ENTRANCE DOOR | | -45 | ALUMINUM ENTRANCE DOOR |
| | -46 | ALUMINUM ENTRANCE DOOR | | -46 | ALUMINUM ENTRANCE DOOR |
| | -47 | ALUMINUM ENTRANCE DOOR | | -47 | ALUMINUM ENTRANCE DOOR |
| | -48 | ALUMINUM ENTRANCE DOOR | | -48 | ALUMINUM ENTRANCE DOOR |
| | -49 | ALUMINUM ENTRANCE DOOR | | -49 | ALUMINUM ENTRANCE DOOR |
| | -50 | ALUMINUM ENTRANCE DOOR | | -50 | ALUMINUM ENTRANCE DOOR |
| | -51 | ALUMINUM ENTRANCE DOOR | | -51 | ALUMINUM ENTRANCE DOOR |
| | -52 | ALUMINUM ENTRANCE DOOR | | -52 | ALUMINUM ENTRANCE DOOR |
| | -53 | ALUMINUM ENTRANCE DOOR | | -53 | ALUMINUM ENTRANCE DOOR |
| | -54 | ALUMINUM ENTRANCE DOOR | | -54 | ALUMINUM ENTRANCE DOOR |
| | -55 | ALUMINUM ENTRANCE DOOR | | -55 | ALUMINUM ENTRANCE DOOR |
| | -56 | ALUMINUM ENTRANCE DOOR | | -56 | ALUMINUM ENTRANCE DOOR |
| | -57 | ALUMINUM ENTRANCE DOOR | | -57 | ALUMINUM ENTRANCE DOOR |
| | -58 | ALUMINUM ENTRANCE DOOR | | -58 | ALUMINUM ENTRANCE DOOR |
| | -59 | ALUMINUM ENTRANCE DOOR | | -59 | ALUMINUM ENTRANCE DOOR |
| | -60 | ALUMINUM ENTRANCE DOOR | | -60 | ALUMINUM ENTRANCE DOOR |
| | -61 | ALUMINUM ENTRANCE DOOR | | -61 | ALUMINUM ENTRANCE DOOR |
| | -62 | ALUMINUM ENTRANCE DOOR | | -62 | ALUMINUM ENTRANCE DOOR |
| | -63 | ALUMINUM ENTRANCE DOOR | | -63 | ALUMINUM ENTRANCE DOOR |
| | -64 | ALUMINUM ENTRANCE DOOR | | -64 | ALUMINUM ENTRANCE DOOR |
| | -65 | ALUMINUM ENTRANCE DOOR | | -65 | ALUMINUM ENTRANCE DOOR |
| | -66 | ALUMINUM ENTRANCE DOOR | | -66 | ALUMINUM ENTRANCE DOOR |
| | -67 | ALUMINUM ENTRANCE DOOR | | -67 | ALUMINUM ENTRANCE DOOR |
| | -68 | ALUMINUM ENTRANCE DOOR | | -68 | ALUMINUM ENTRANCE DOOR |
| | -69 | ALUMINUM ENTRANCE DOOR | | -69 | ALUMINUM ENTRANCE DOOR |
| | -70 | ALUMINUM ENTRANCE DOOR | | -70 | ALUMINUM ENTRANCE DOOR |
| | -71 | ALUMINUM ENTRANCE DOOR | | -71 | ALUMINUM ENTRANCE DOOR |
| | -72 | ALUMINUM ENTRANCE DOOR | | -72 | ALUMINUM ENTRANCE DOOR |
| | -73 | ALUMINUM ENTRANCE DOOR | | -73 | ALUMINUM ENTRANCE DOOR |
| | -74 | ALUMINUM ENTRANCE DOOR | | -74 | ALUMINUM ENTRANCE DOOR |
| | -75 | ALUMINUM ENTRANCE DOOR | | -75 | ALUMINUM ENTRANCE DOOR |
| | -76 | ALUMINUM ENTRANCE DOOR | | -76 | ALUMINUM ENTRANCE DOOR |
| | -77 | ALUMINUM ENTRANCE DOOR | | -77 | ALUMINUM ENTRANCE DOOR |
| | -78 | ALUMINUM ENTRANCE DOOR | | -78 | ALUMINUM ENTRANCE DOOR |
| | -79 | ALUMINUM ENTRANCE DOOR | | -79 | ALUMINUM ENTRANCE DOOR |
| | -80 | ALUMINUM ENTRANCE DOOR | | -80 | ALUMINUM ENTRANCE DOOR |
| | -81 | ALUMINUM ENTRANCE DOOR | | -81 | ALUMINUM ENTRANCE DOOR |
| | -82 | ALUMINUM ENTRANCE DOOR | | -82 | ALUMINUM ENTRANCE DOOR |
| | -83 | ALUMINUM ENTRANCE DOOR | | -83 | ALUMINUM ENTRANCE DOOR |
| | -84 | ALUMINUM ENTRANCE DOOR | | -84 | ALUMINUM ENTRANCE DOOR |
| | -85 | ALUMINUM ENTRANCE DOOR | | -85 | ALUMINUM ENTRANCE DOOR |
| | -86 | ALUMINUM ENTRANCE DOOR | | -86 | ALUMINUM ENTRANCE DOOR |
| | -87 | ALUMINUM ENTRANCE DOOR | | -87 | ALUMINUM ENTRANCE DOOR |
| | -88 | ALUMINUM ENTRANCE DOOR | | -88 | ALUMINUM ENTRANCE DOOR |
| | -89 | ALUMINUM ENTRANCE DOOR | | -89 | ALUMINUM ENTRANCE DOOR |
| | -90 | ALUMINUM ENTRANCE DOOR | | -90 | ALUMINUM ENTRANCE DOOR |
| | -91 | ALUMINUM ENTRANCE DOOR | | -91 | ALUMINUM ENTRANCE DOOR |
| | -92 | ALUMINUM ENTRANCE DOOR | | -92 | ALUMINUM ENTRANCE DOOR |
| | -93 | ALUMINUM ENTRANCE DOOR | | -93 | ALUMINUM ENTRANCE DOOR |
| | -94 | ALUMINUM ENTRANCE DOOR | | -94 | ALUMINUM ENTRANCE DOOR |
| | -95 | ALUMINUM ENTRANCE DOOR | | -95 | ALUMINUM ENTRANCE DOOR |
| | -96 | ALUMINUM ENTRANCE DOOR | | -96 | ALUMINUM ENTRANCE DOOR |
| | -97 | ALUMINUM ENTRANCE DOOR | | -97 | ALUMINUM ENTRANCE DOOR |
| | -98 | ALUMINUM ENTRANCE DOOR | | -98 | ALUMINUM ENTRANCE DOOR |
| | -99 | ALUMINUM ENTRANCE DOOR | | -99 | ALUMINUM ENTRANCE DOOR |
| | -100 | ALUMINUM ENTRANCE DOOR | | -100 | ALUMINUM ENTRANCE DOOR |

NOTE: REFER TO STRUCTURAL DRAWINGS FOR REINFORCING STEEL IN EXTERIOR WALLS AND CONCRETE NOT SHOWN

NOTE: REFER TO ALL DETAILS (DETAILS LOCATED ON THIS SHEET, PRECEDING SHEETS AND FOLLOWING SHEETS) FOR APPLICABLE NOTES NOT SHOWN

NOTE: REFER TO ALL SECTIONS (SECTIONS LOCATED ON THIS SHEET, PRECEDING SHEETS AND FOLLOWING SHEETS) FOR APPLICABLE NOTES NOT SHOWN



DATE: SEPTEMBER 2, 2014

REVISED DATE:

ROCK PORT R-2 - HIGH SCHOOL GYMNASIUM ADDITION

ROCK PORT R2 SCHOOLS
 ROCK PORT R2 - ROCK PORT HIGH SCHOOL - 600 S. NEBRASKA ST., ROCK PORT, MO

SHEET CONTENTS:
 BUILDING SECTIONS

HTK PROJECT NUMBER:
 1307.04-002

SHEET NUMBER:
A301
 CONTRACT DOCUMENTS