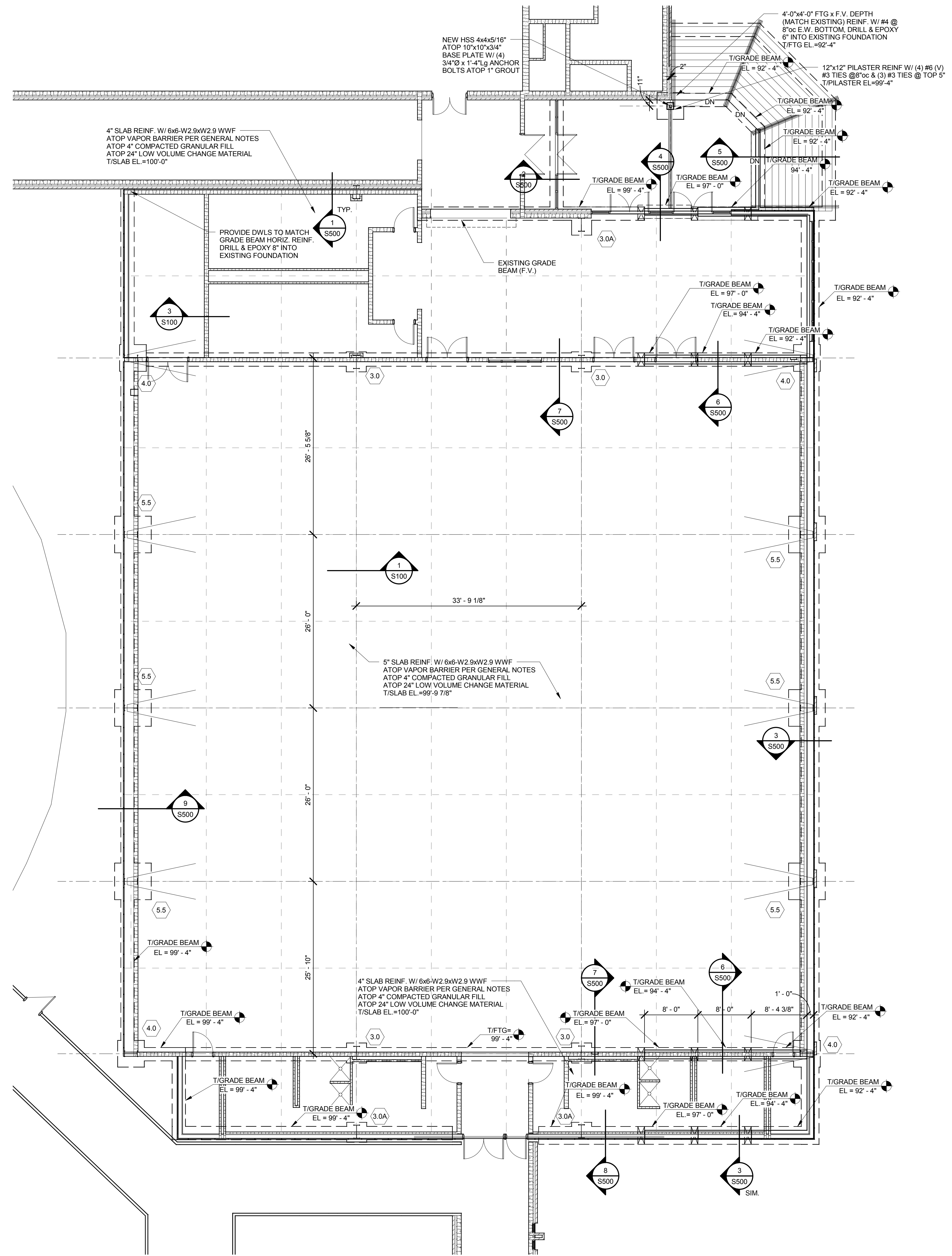
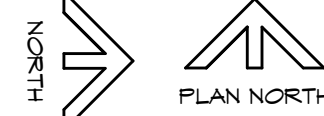


2 ROOF FRAMING PLAN

1/8" = 1'-0"

NOTES:
1. REFER TO GENERAL NOTES ON SHEET S100.



CONCRETE FOOTING SCHEDULE

SOIL PRESSURE (PSF):	CONCRETE (PSI):	REBAR (KSI):
5000	3500	60
TYPE	FOOTING SIZE (FT.) THICKNESS (IN.)	BAR SIZE/E.A. WAY SPACING (IN.) BOTTOM
(3.0)	3'-0" x 3'-0" x 12"	(4) #4 x2'-6"Lg.
(3.0A)	3'-0" x 3'-0" x 12"	(4) #4 x2'-6"Lg.
(4.0)	4'-0" x 4'-0" x 32"	(4) #5 x3'-6"Lg T & B
(5.5)	5'-6" x 5'-6" x 32"	(6) #5 x5'-0"Lg T & B

NOTE:
1) EXTERIOR FOOTINGS OR FOOTING AT GRADE BEAM SHALL MATCH GRADE BEAM DEPTH AND BE PLACE WITH GRADE BEAM. PROVIDE SPECIFIED REBAR TOP AND BOTTOM WITH 4 STRANDES TO SUPPORT MATS.
2) CENTER FOOTINGS ON COLUMNS AND/OR WALL CENTER LINES PER PLAN, UNLESS OTHERWISE NOTED.

1 FOUNDATION PLAN

1/8" = 1'-0"
NOTES:
1. REFER TO GENERAL NOTES ON SHEET S100.
2. FIELD VERIFY ALL EXISTING CONDITIONS PRIOR TO FABRICATION OF MATERIALS OR COMMENCING WITH CONSTRUCTION.
3. REFER TO FOOTING AND COLUMN SCHEDULES ON SHEET S100.



B D C
Structural Engineers - Since 1957
BOB D. CAMPBELL & CO., INC.
4338 Bellevue
Kansas City, MO 64111
(816) 531-4144 FAX (816) 531-8572
©2012 - BOB D. CAMPBELL & CO., INC.

DATE:
• SEPTEMBER 2, 2014

REVISED DATE:
•

ROCK PORT R-2 - HIGH SCHOOL GYMNASIUM ADDITION

SHEET CONTENTS:
• FOUNDATION PLAN

HTK PROJECT NUMBER:
• 1307.04-002

SHEET NUMBER:
S101

CONTRACT DOCUMENTS