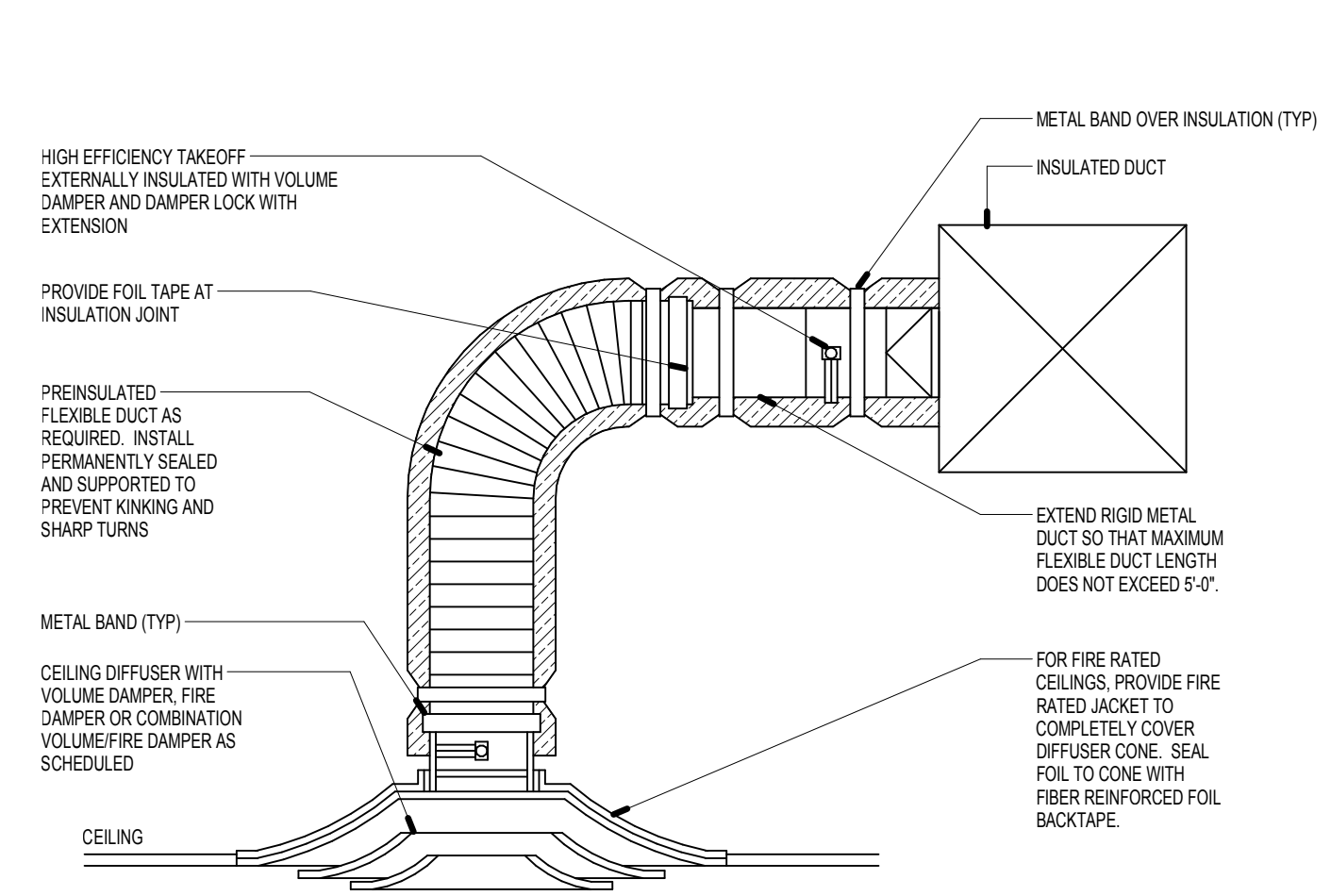
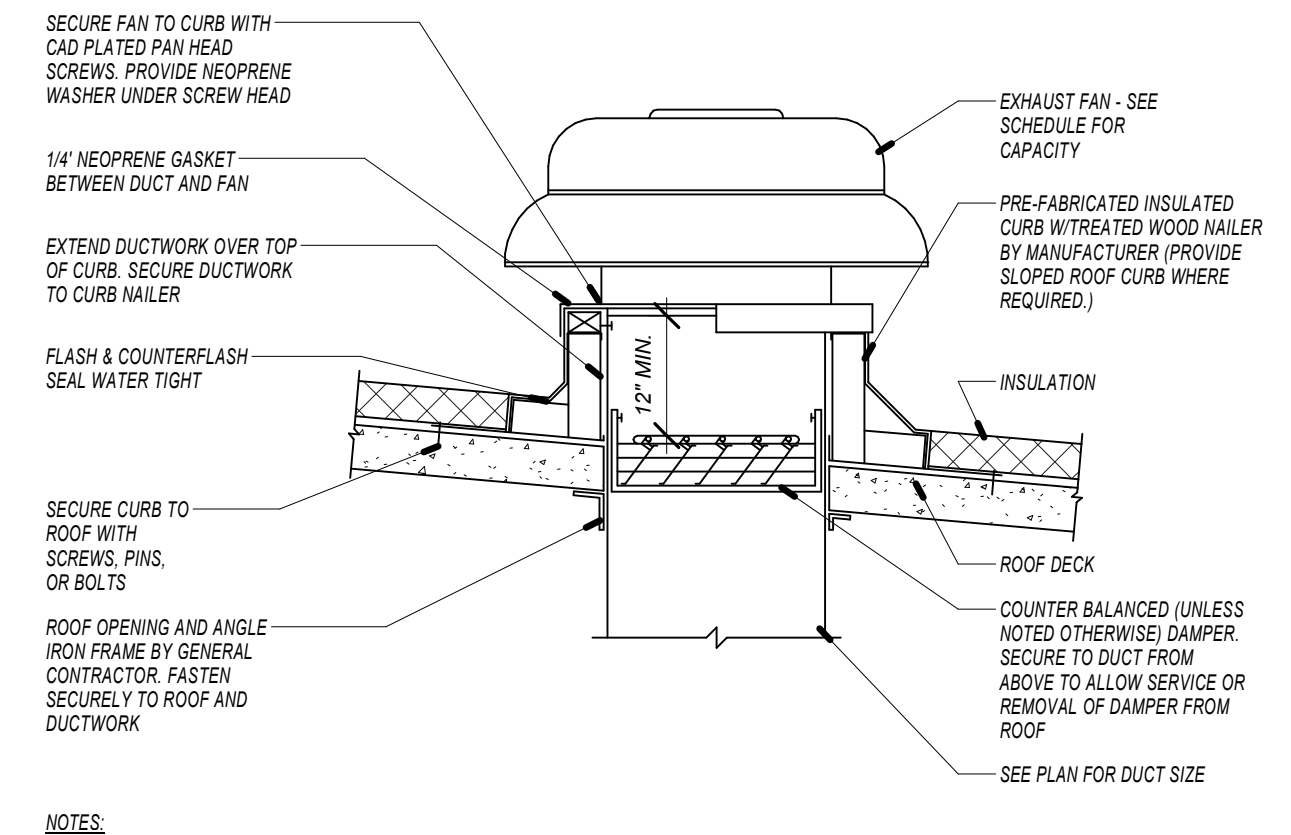


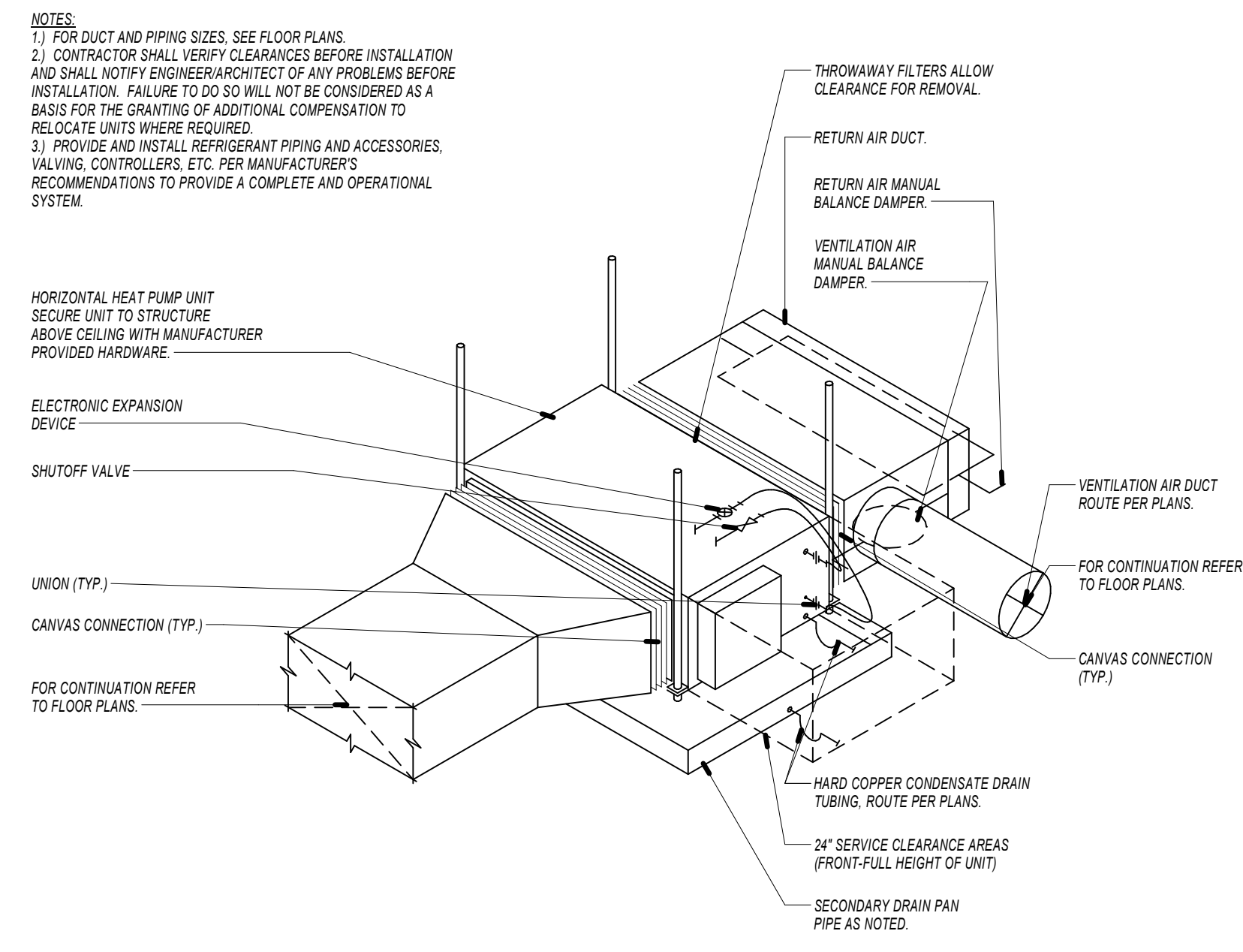
**1 DUCT STANDARDS DETAIL**  
SCALE: NONE



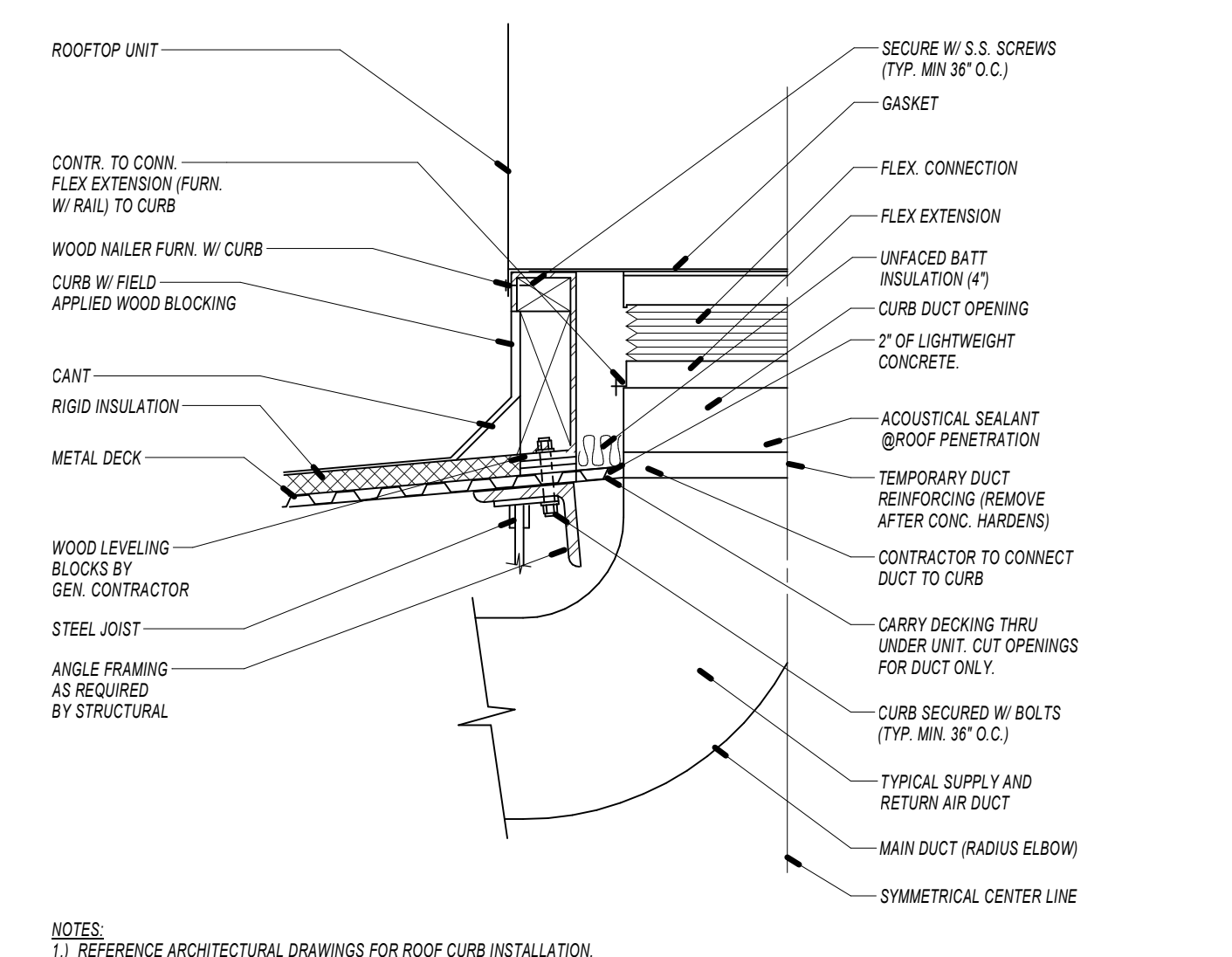
**2 CEILING DIFFUSER DETAIL**  
SCALE: NONE



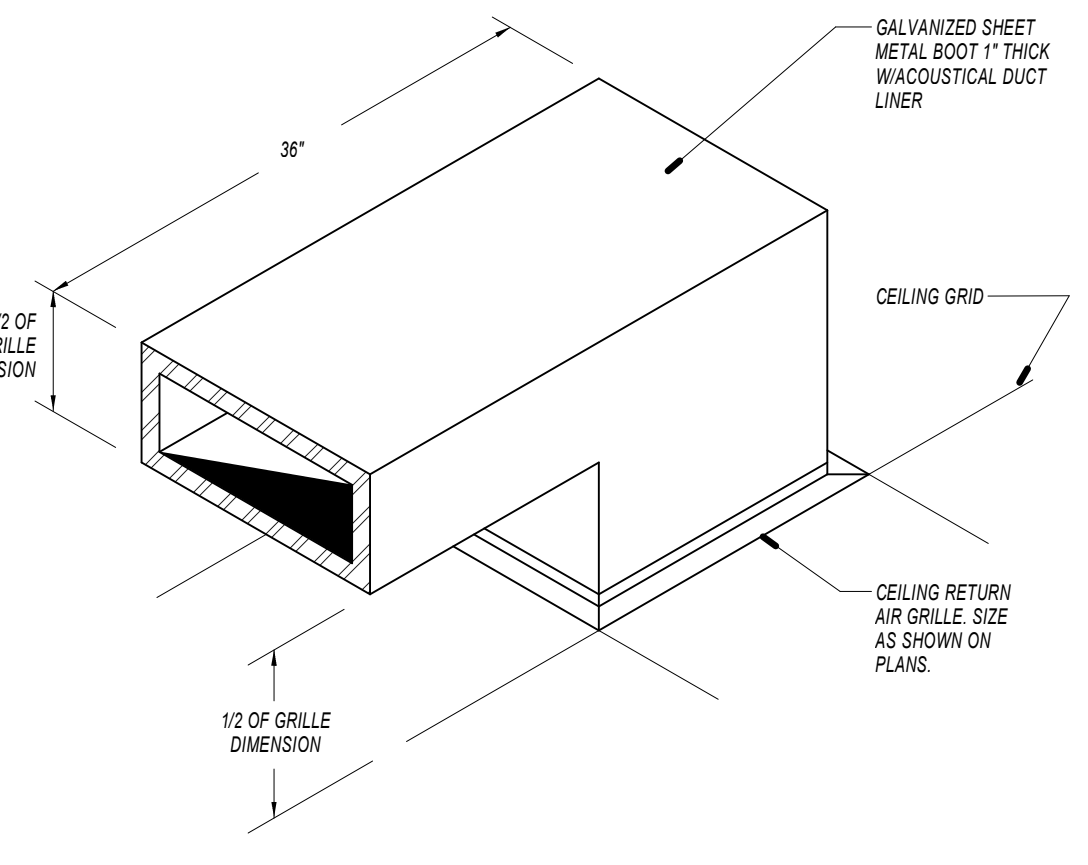
**3 ROOF MOUNTED EXHAUST FAN DETAIL**  
SCALE: NONE



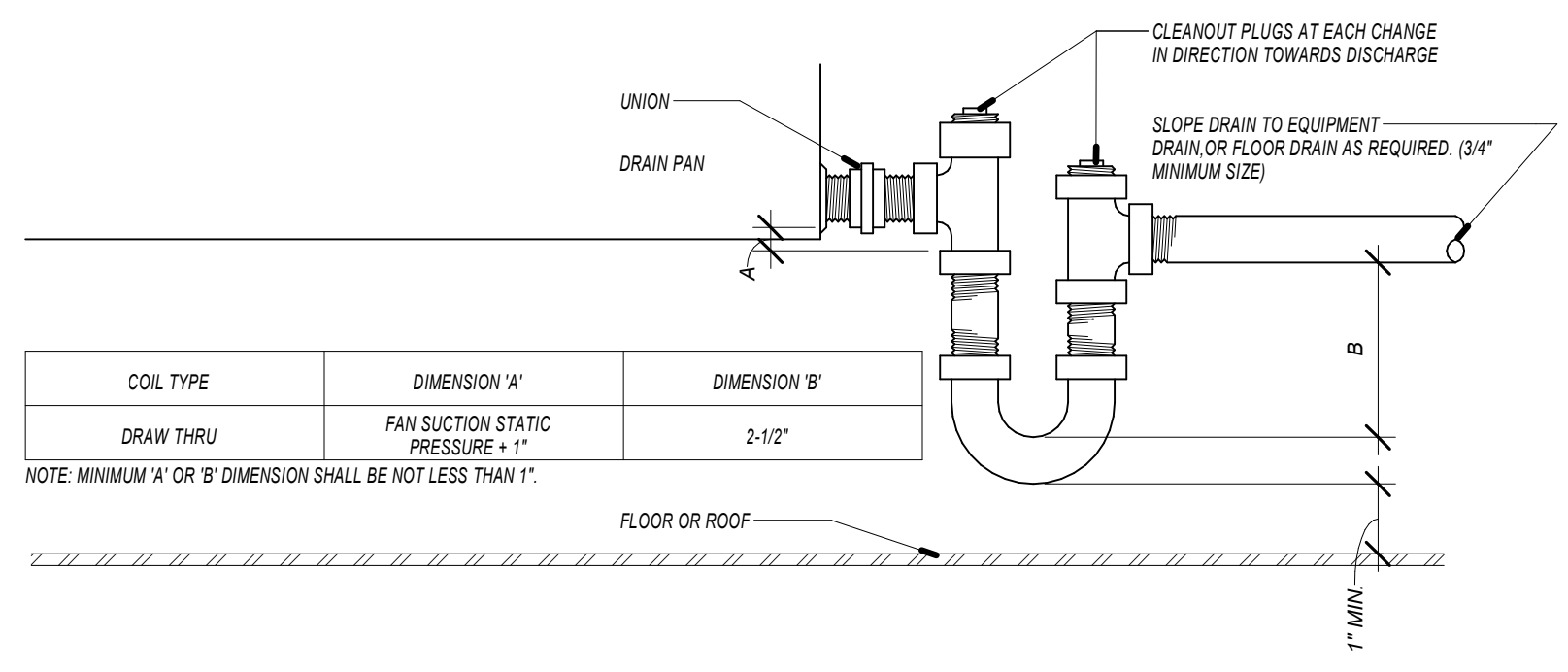
**5 HORIZONTAL FAN COIL UNIT DETAIL**  
SCALE: NONE



**6 ROOF CURB AND DUCT DETAIL**  
SCALE: NONE



**7 RETURN AIR BOOT DETAIL**  
SCALE: NONE



**9 HVAC CONDENSATE TRAP DRAIN DETAIL**  
SCALE: NONE

COL TYPE	DIMENSION 'A'	DIMENSION 'B'
DRAW THRU	FAN SUCTION STATIC PRESSURE 1"	2-1/2"



DATE:  
● SEPTEMBER 2, 2014  
REVISED DATE:  
●

**ROCK PORT R-2 - HIGH SCHOOL GYMNASIUM ADDITION**  
ROCK PORT R-2 SCHOOLS  
ROCK PORT R-2 - ROCK PORT HIGH SCHOOL - 600 S. NEBRASKA ST., ROCK PORT, MO

SHEET CONTENTS:  
DETAILS  
HTK PROJECT NUMBER:  
● 1307.04-002  
SHEET NUMBER:  
**M201**  
NOT FOR CONSTRUCTION