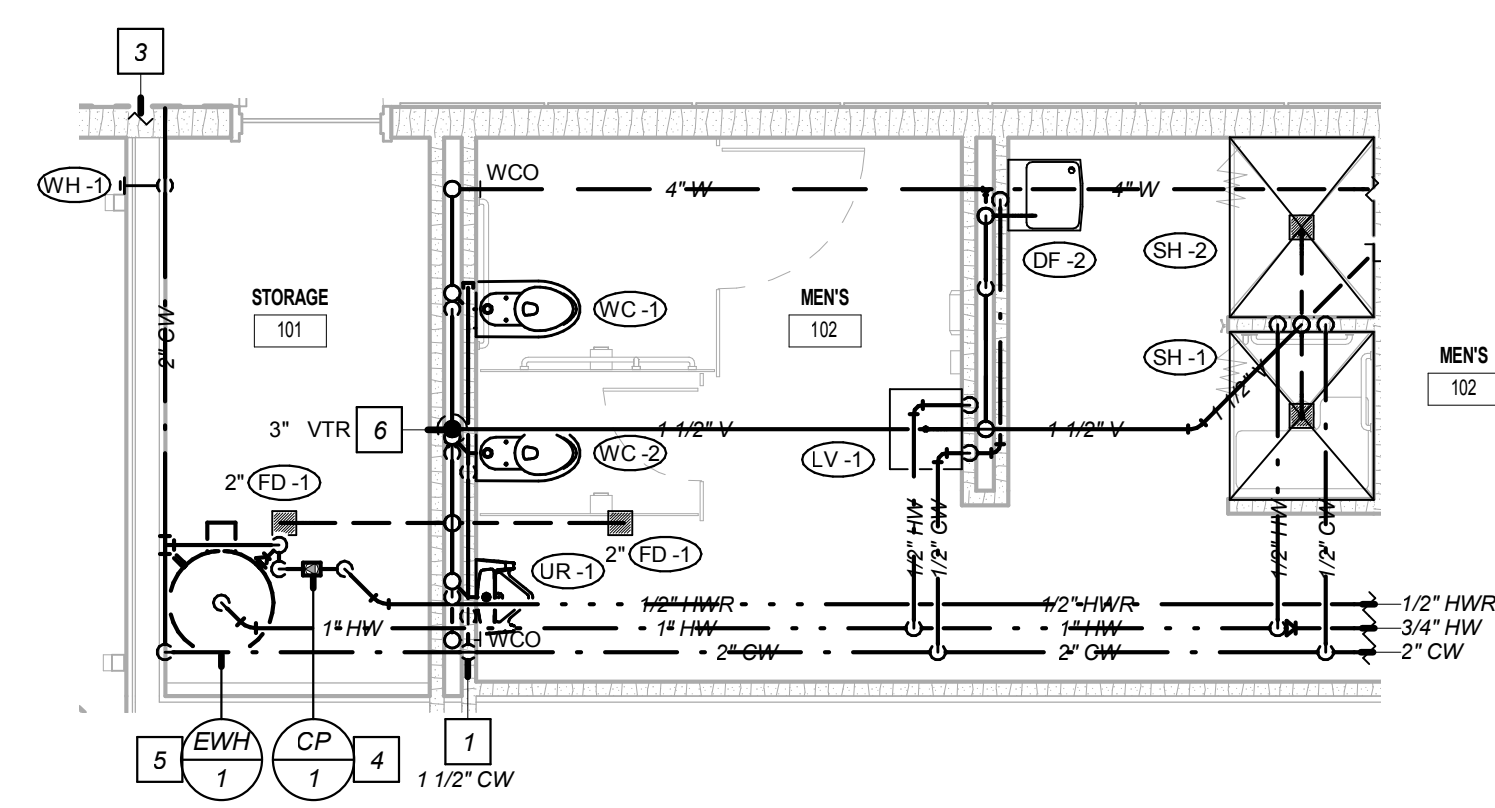
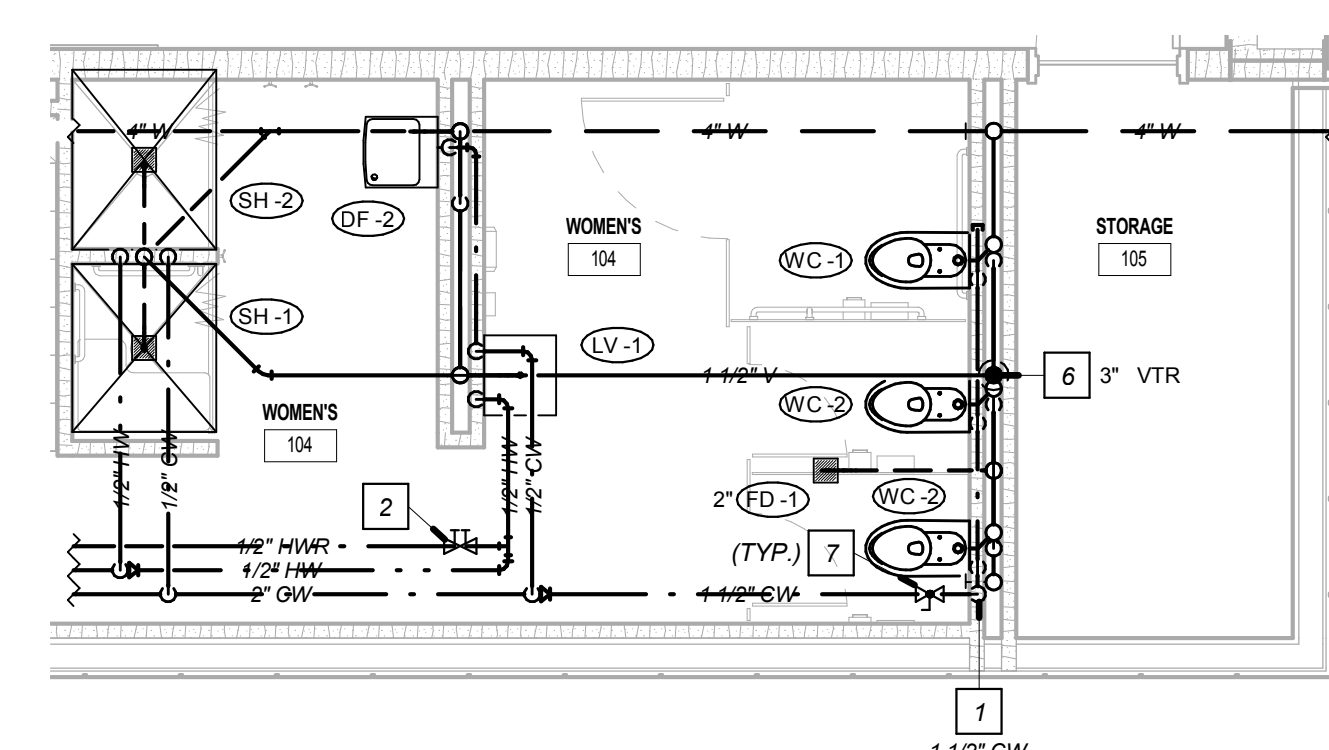


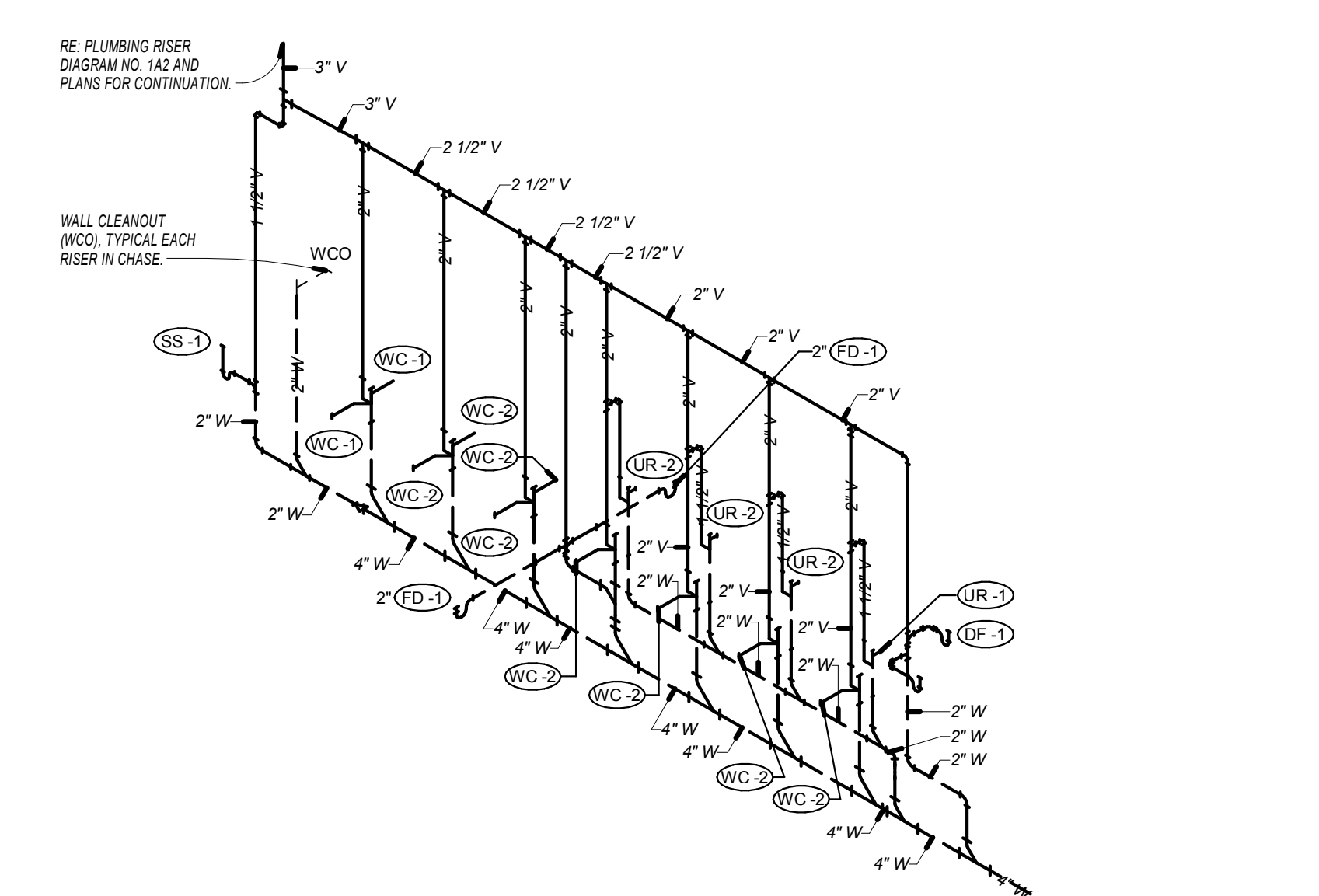
1 ENLARGED FLOOR PLAN-PLUMBING
SCALE: 1/4" = 1'-0"



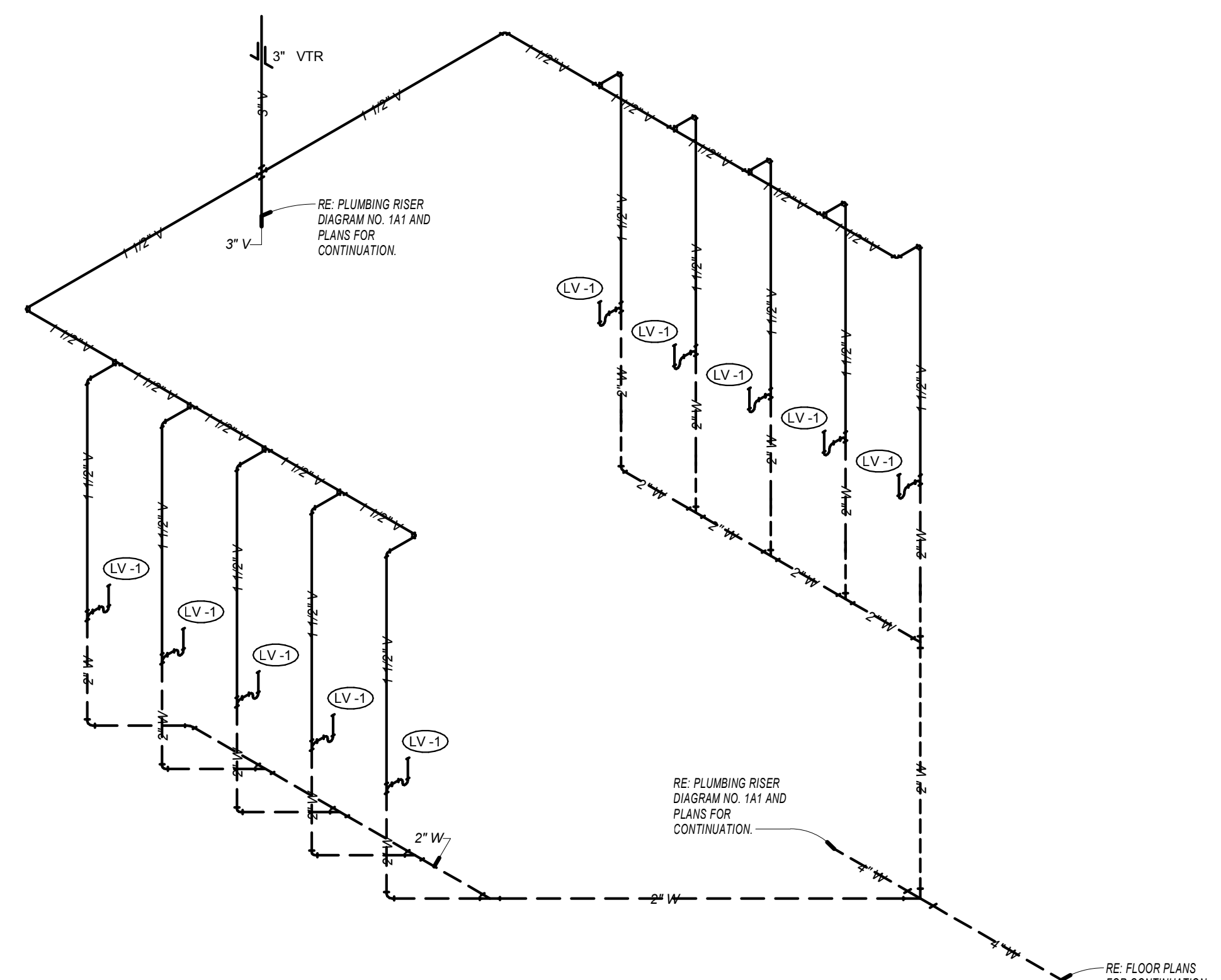
2 ENLARGED FLOOR PLAN-PLUMBING
SCALE: 1/4" = 1'-0"



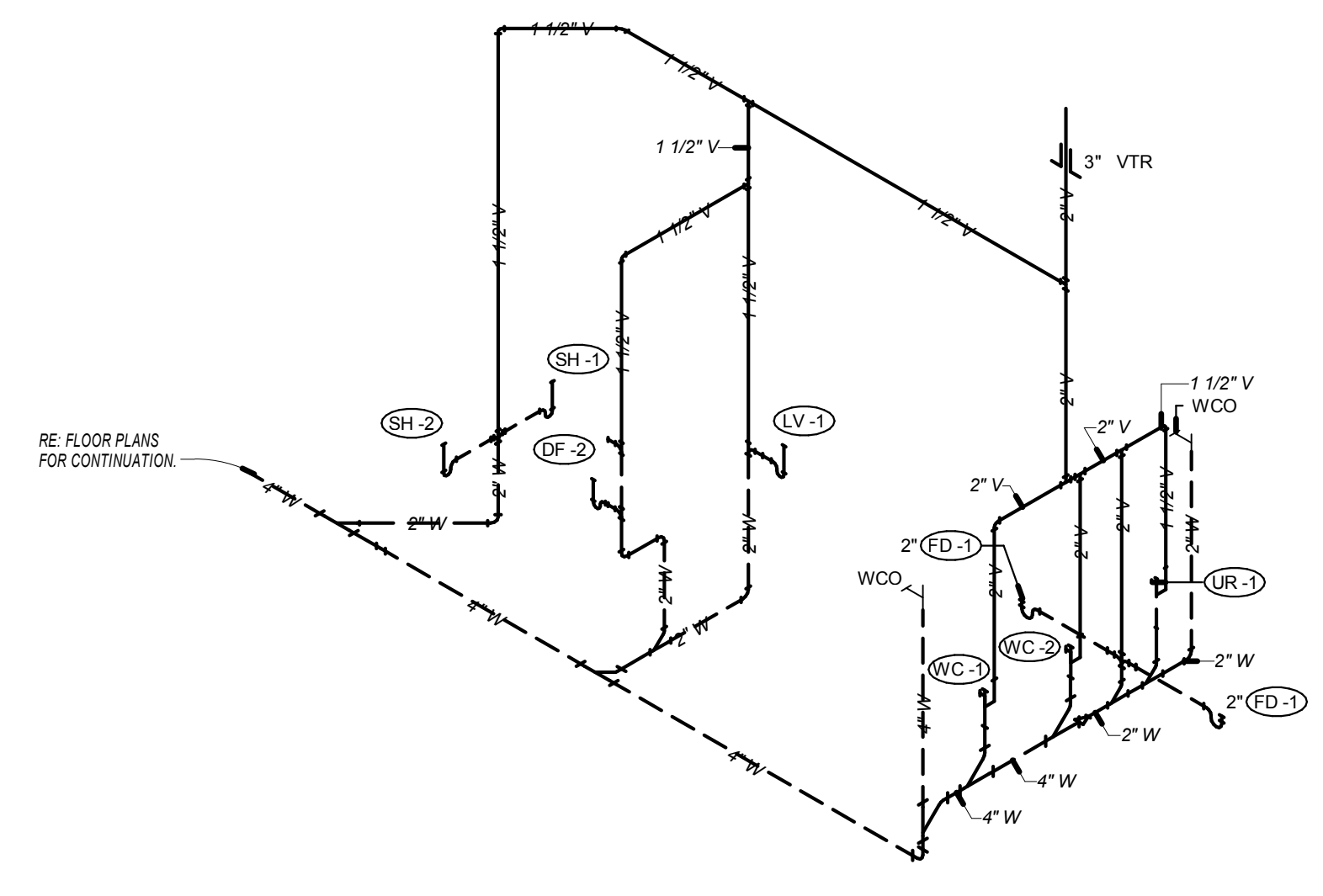
3 ENLARGED FLOOR PLAN-PLUMBING
SCALE: 1/4" = 1'-0"



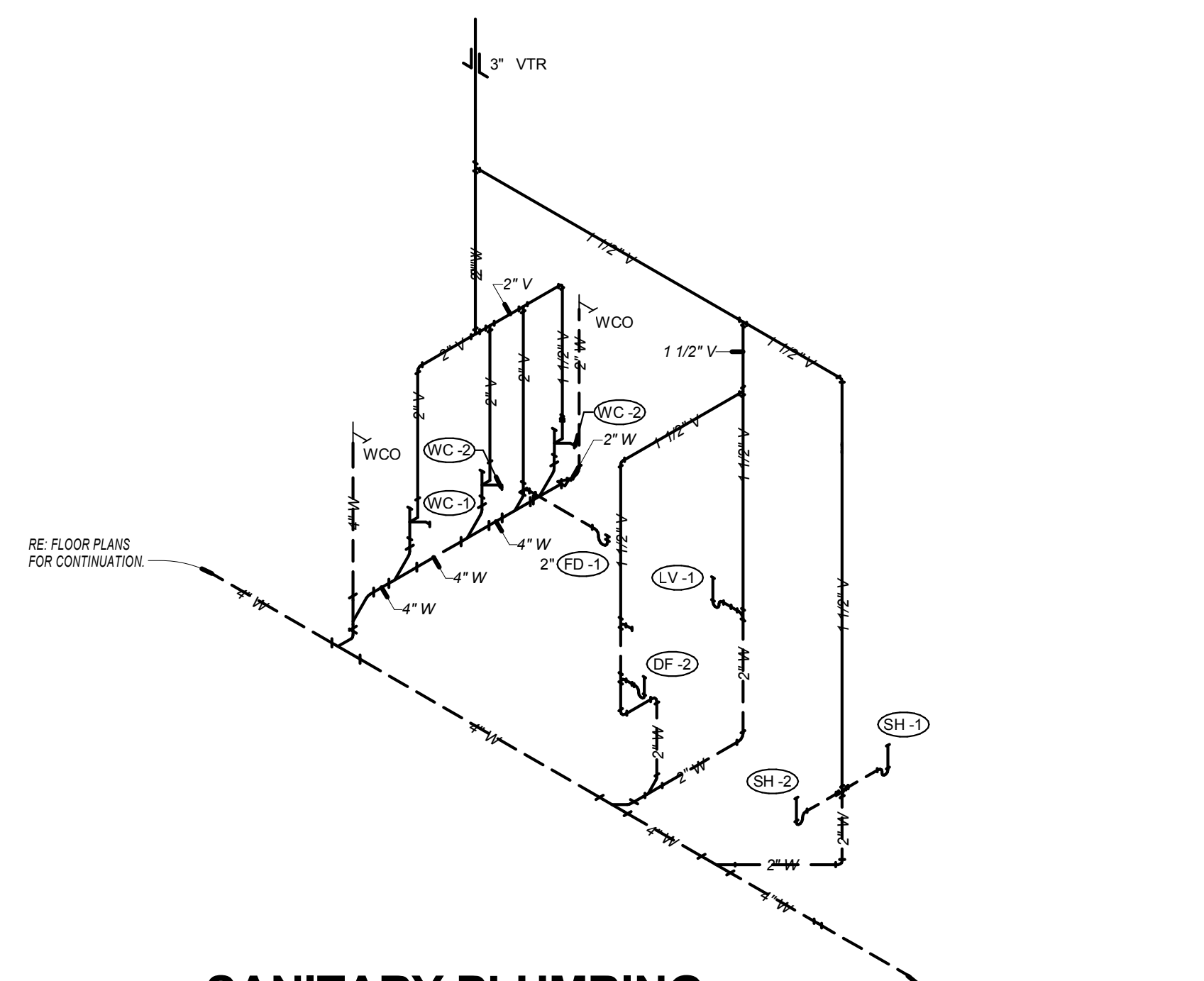
4 SANITARY PLUMBING RISER DIAGRAM NO. 1A
SCALE:



5 SANITARY PLUMBING RISER DIAGRAM NO. 1B
SCALE:



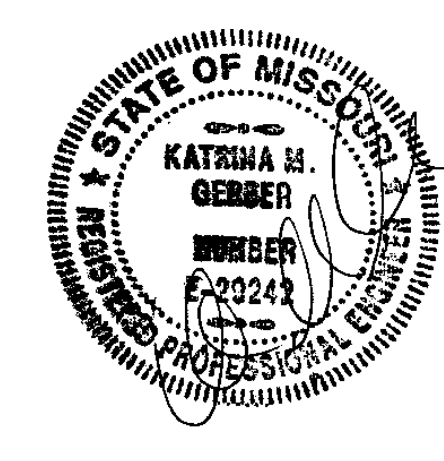
6 SANITARY PLUMBING RISER DIAGRAM NO. 2
SCALE:



7 SANITARY PLUMBING RISER DIAGRAM NO. 3
SCALE:

FLOOR PLAN NOTES

- 1 COLD WATER LINE WITH SHUTOFF VALVE DOWN WITHIN PLUMBING CHASE. SIZE PER PLANS. ROUTE LINE FULL SIZE THE ENTIRE LENGTH OF CHASE AND CONNECT TO EACH FIXTURE WHERE REQUIRED. VALVING SHALL BE INSTALLED IN AN ACCESSIBLE LOCATION, WHERE PROVISIONS FOR ACCESS HAVE NOT ALREADY BEEN MADE CONTRACTOR SHALL PROVIDE A 12X12 TAMPER-PROOF LOCKABLE PANEL. CONTRACTOR SHALL COORDINATE EXACT LOCATION OF ACCESS PANELS WITH ARCHITECT PRIOR TO THE ROUTING OF ANY PIPING.
- 2 COMBINATION SHUTOFF (QUARTER TURN BALL TYPE) AND BALANCE VALVE (QUICK SET), SET AT 0.5 GPM.
- 3 COLD WATER LINE UP FROM BELOW FLOOR SLAB WITHIN PLUMBING CHASE / WALL. SIZE PER PLANS.
- 4 DOMESTIC HOT WATER CIRCULATOR. RE: DETAIL.
- 5 DOMESTIC WATER HEATER. INSTALL ON 4" HIGH CONCRETE HOUSEKEEPING PAD. RE: DETAIL.
- 6 VENT UP THROUGH ROOF. RE: DETAIL. SIZE PER PLANS AND PLUMBING RISER.
- 7 SHUTOFF VALVE. QUARTER TURN BALL TYPE.



DATE:
 • SEPTEMBER 2, 2014
 REVISED DATE:
 •

ROCK PORT R-2 - HIGH SCHOOL GYMNASIUM ADDITION

ROCK PORT R-2 SCHOOLS
 ROCK PORT R-2 - ROCK PORT HIGH SCHOOL - 600 S. NEBRASKA ST., ROCK PORT, MO

SHEET CONTENTS:
 • ENLARGED PLUMBING PLANS

HTK PROJECT NUMBER:
 • 1307.04-002

SHEET NUMBER:
P102

NOT FOR CONSTRUCTION

