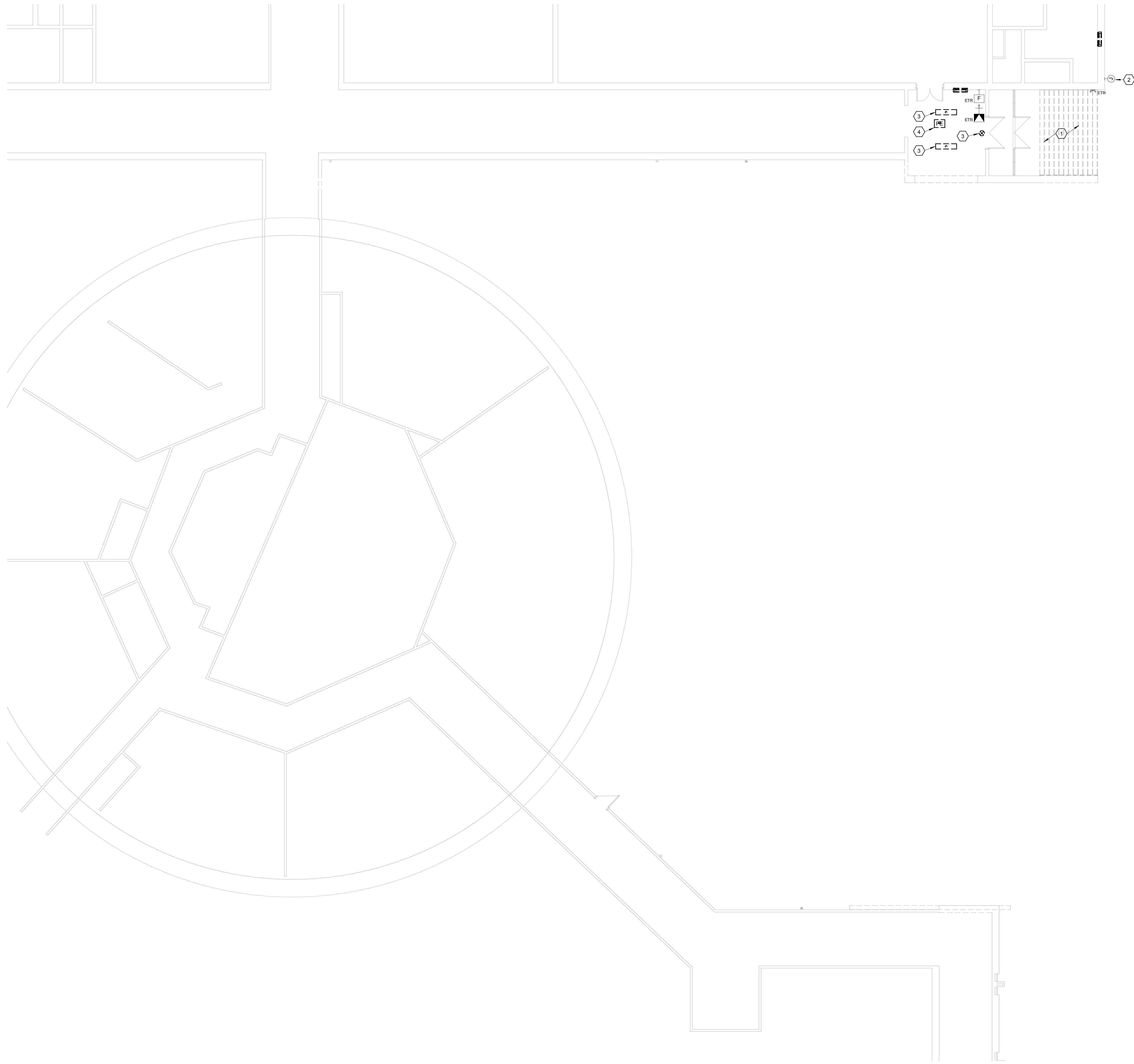


9/2/2014 12:00:13 PM C:\Users\kgerber\Documents\1307\1307.04 - ROCKPORT HS GYMNASIUM_KGerber.rvt



FLOOR PLAN NOTES

- 1 REMOVE EXISTING LIGHT FIXTURES AND ALL ASSOCIATED CIRCUITRY IN THIS AREA.
- 2 REMOVE AND RELOCATE EXISTING CONTROL BOX FOR SPRINKLER SYSTEM.
- 3 REMOVE EXISTING LIGHT FIXTURE AND MAINTAIN ALL ASSOCIATED CIRCUITRY FOR CONNECTION TO NEW LIGHT FIXTURES. REFERENCE FLOOR PLAN - LIGHTING.
- 4 REMOVE AND RELOCATE EXISTING SMOKE DETECTOR INTO NEW CEILING GRID. MAINTAIN ALL ASSOCIATED CIRCUITRY FOR RECONNECTION. REFERENCE FLOOR PLAN - POWER.

1 FLOOR PLAN - ELECTRICAL DEMOLITION
SCALE: 1/8" = 1'-0"

bgr
Consulting Engineers

908 Broadway, Suite 200
Kansas City, MO 64105-1590
Ph: 816.842.2600
Fx: 816.842.4884
www.bgrengeers.com

HTK
ARCHITECTS PA

908 SW BASKIN AVE
TOPEKA KANSAS 66611
P 785.266.5273
www.htkarchitects.net



DATE:
• SEPTEMBER 2, 2014

REVISED DATE:
•
•
•

ROCKPORT R-2 HIGH SCHOOL GYMNASIUM ADDITION

ROCKPORT R-2 SCHOOLS
ROCKPORT R-2 - ROCKPORT HIGH SCHOOL - 600 S. NEBRASKA ST., ROCKPORT, MO

SHEET CONTENTS:
• FLOOR PLAN - DEMOLITION

HTK PROJECT NUMBER:
• 1307.04.002

SHEET NUMBER:
DE101