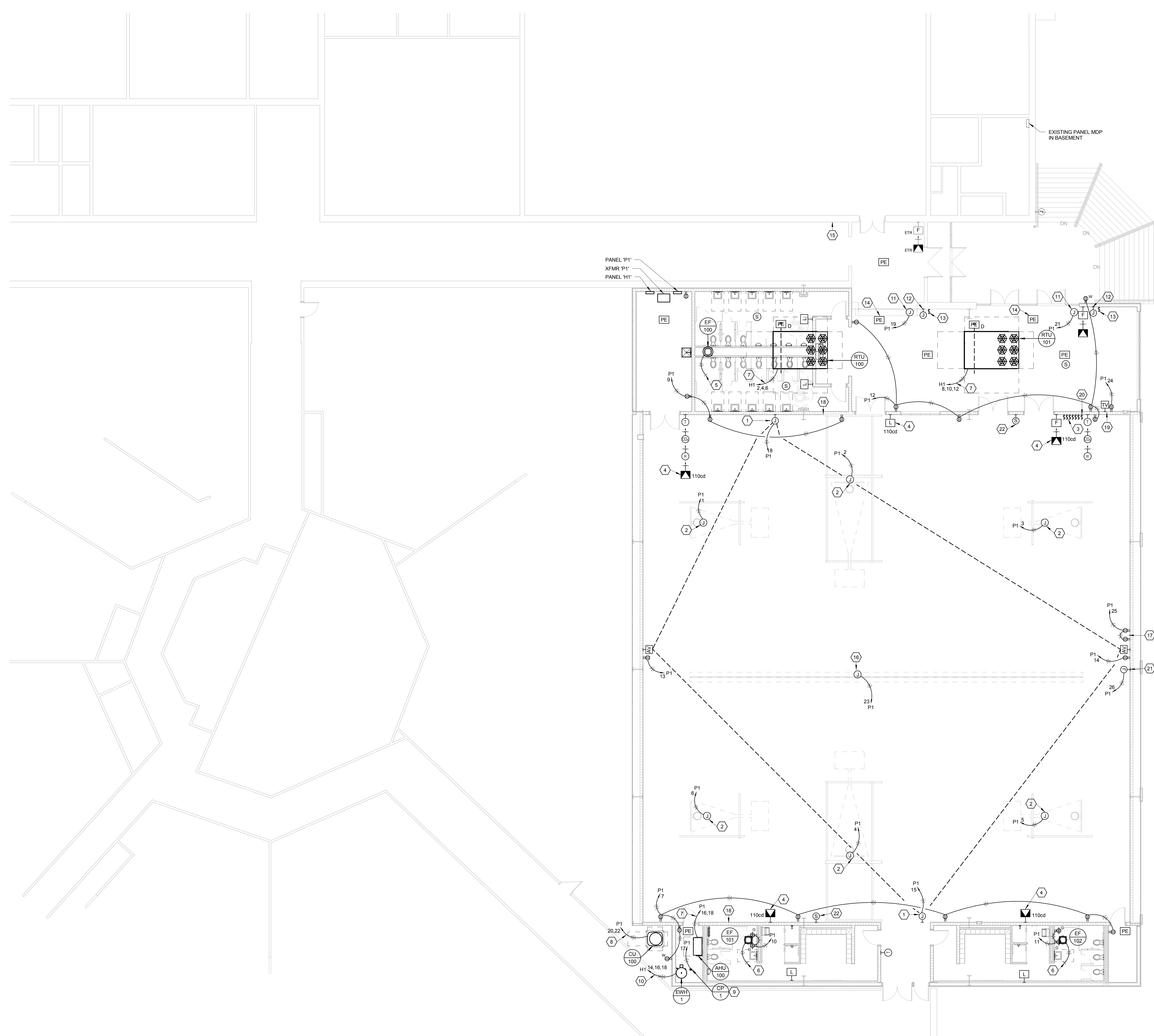


**FLOOR PLAN NOTES**

- 1 PROVIDE AND INSTALL JUNCTION BOX AT 18'-0" AFF AND MAKE POWER CONNECTION TO SCOREBOARD. COORDINATE EXACT LOCATION AND REQUIREMENTS WITH MANUFACTURER PRIOR TO ROUGH-IN. ROUTE A 1" CONDUIT FROM SCOREBOARD TO CONTROL LOCATION AS INDICATED.
- 2 PROVIDE AND INSTALL JUNCTION BOX AND MAKE POWER CONNECTION TO MOTORIZED BASKETBALL GOAL. COORDINATE EXACT LOCATION AND REQUIREMENTS WITH MANUFACTURER PRIOR TO INSTALLATION.
- 3 ROUGH-IN LOCATION FOR MOTORIZED BASKETBALL GOAL CONTROL SWITCHES. MAKE ALL REQUIRED CONNECTIONS. CONTRACTOR SHALL STACK SWITCHES AND PROVIDE (2) 4-GANG COMMON COVERPLATES FOR THE (2) LIGHT SWITCHES AND (6) MOTORIZED GOAL SWITCHES AT THIS LOCATION.
- 4 PROVIDE AND INSTALL WIREGUARD FOR FIRE ALARM DEVICES.
- 5 CONNECT TO RESTROOM LIGHTING CIRCUIT. FAN SHALL ENERGIZE WHEN EITHER OF THE RESTROOMS OCCUPANCY SENSORS ARE ACTIVATED ON. REFERENCE MULTI-RESTROOM EXHAUST FAN CONTROL DETAIL.
- 6 CONNECT TO RESTROOM LIGHTING CIRCUIT. FAN SHALL ENERGIZE WHEN THE RESTROOM OCCUPANCY SENSORS IS ACTIVATED ON.
- 7 MAKE POWER CONNECTION TO HVAC UNIT AND HOMERUN WITH 4-#4 & 1-#6 GROUND WIRE IN A 1 1/4" CONDUIT.
- 8 MAKE POWER CONNECTION TO HVAC UNIT AND HOMERUN WITH 4-#10 & 1-#10 GROUND WIRE IN A 3/4" CONDUIT.
- 9 CONNECT TO RECIRCULATION PUMP AS REQUIRED AND INSTALL AQUASTAT FOR CONTROL OF PUMP. PROVIDE CONTROL POWER TO HOT WATER HEATER AS REQUIRED.
- 10 PROVIDE AND INSTALL 480V, 30A/3P DISCONNECT SWITCH. MAKE POWER CONNECTION TO EWH AND HOMERUN WITH 4-#10 & 1-#10 GROUND WIRE IN A 3/4" CONDUIT.
- 11 PROVIDE AND INSTALL JUNCTION BOX AND MAKE POWER CONNECTION TO MOTORIZED COILING DOOR. COORDINATE EXACT ELECTRICAL REQUIREMENTS WITH MANUFACTURER PRIOR TO INSTALLATION.
- 12 PROVIDE AND INSTALL JUNCTION BOX WITH A 3/4" CONDUIT FROM BOX UP TO COIL DOOR MOTOR LOCATION. JUNCTION BOX SHALL BE INSTALLED AT 1/2 THE TOTAL DOOR HEIGHT. COORDINATE EXACT ELECTRICAL REQUIREMENTS WITH MANUFACTURER PRIOR TO INSTALLATION.
- 13 INSTALL SURFACE MOUNT 3-BUTTON CONTROL BOX PROVIDED BY OTHERS. PROVIDE AND INSTALL 3/4" CONDUIT FROM CONTROL BOX TO ADJACENT WALL MOUNT JUNCTION BOX. RE NOTE 12.
- 14 PROVIDE AND INSTALL SMOKE DETECTOR AND MAKE ALL REQUIRED CONNECTIONS TO MOTORIZED COILING DOOR. COORDINATE WITH MANUFACTURER PRIOR TO INSTALLATION. PROVIDE REQUIRED FIRE ALARM INTERFACE.
- 16 UNDER ALTERNATE- INSTALL JUNCTION BOX ON STRUCTURE AND MAKE CONNECTION TO MOTORIZED CURTAIN PER MANUFACTURER'S REQUIREMENTS. HOMERUN TO PANEL INDICATED WITH 3/4" 3#10 & 1-#10 GROUND.
- 17 INSTALL (2) DUPLEX OUTLETS AT 15'-0" AFF. COORDINATE EXACT LOCATION WITH ARCHITECT PRIOR TO ROUGH-IN.
- 18 INSTALL 1" C IN WALL FROM ACCESSIBLE CEILING TO 30'-0" AFF AND STUB OUT INTO GYM.
- 19 INSTALL RECEPTACLE AND TV OUTLET AT 72" AFF. COORDINATE EXACT LOCATION WITH ARCHITECT PRIOR TO TIE-IN.
- 20 INSTALL SWITCH FOR MOTORIZED CURTAIN AND PROVIDE WIRING AS REQUIRED.
- 21 UNDER ALTERNATE- INSTALL JUNCTION BOX AND MAKE CONNECTION TO MOTORIZED BLEACHERS. COORDINATE ALL REQUIREMENTS WITH MANUFACTURER.
- 22 COORDINATE EXACT HEIGHT WITH ARCHITECT PRIOR TO INSTALLATION.



**1 FLOOR PLAN-POWER**  
SCALE: 1/8" = 1'-0"



DATE:  
● SEPTEMBER 2, 2014  
REVISED DATE:  
●

**ROCKPORT R-2 HIGH SCHOOL GYMNASIUM ADDITION**  
ROCKPORT R-2 SCHOOLS  
ROCKPORT R-2 - ROCKPORT HIGH SCHOOL - 600 S. NEBRASKA ST., ROCKPORT, MO

SHEET CONTENTS:  
● FLOOR PLAN - POWER

HTK PROJECT NUMBER:  
● 1307.04.002

SHEET NUMBER:  
**E101**



9/2/2014 12:00:15 PM C:\Users\kgerber\Documents\1307.04 - ROCKPORT HS GYMNASIUM\_KGerber.rvt