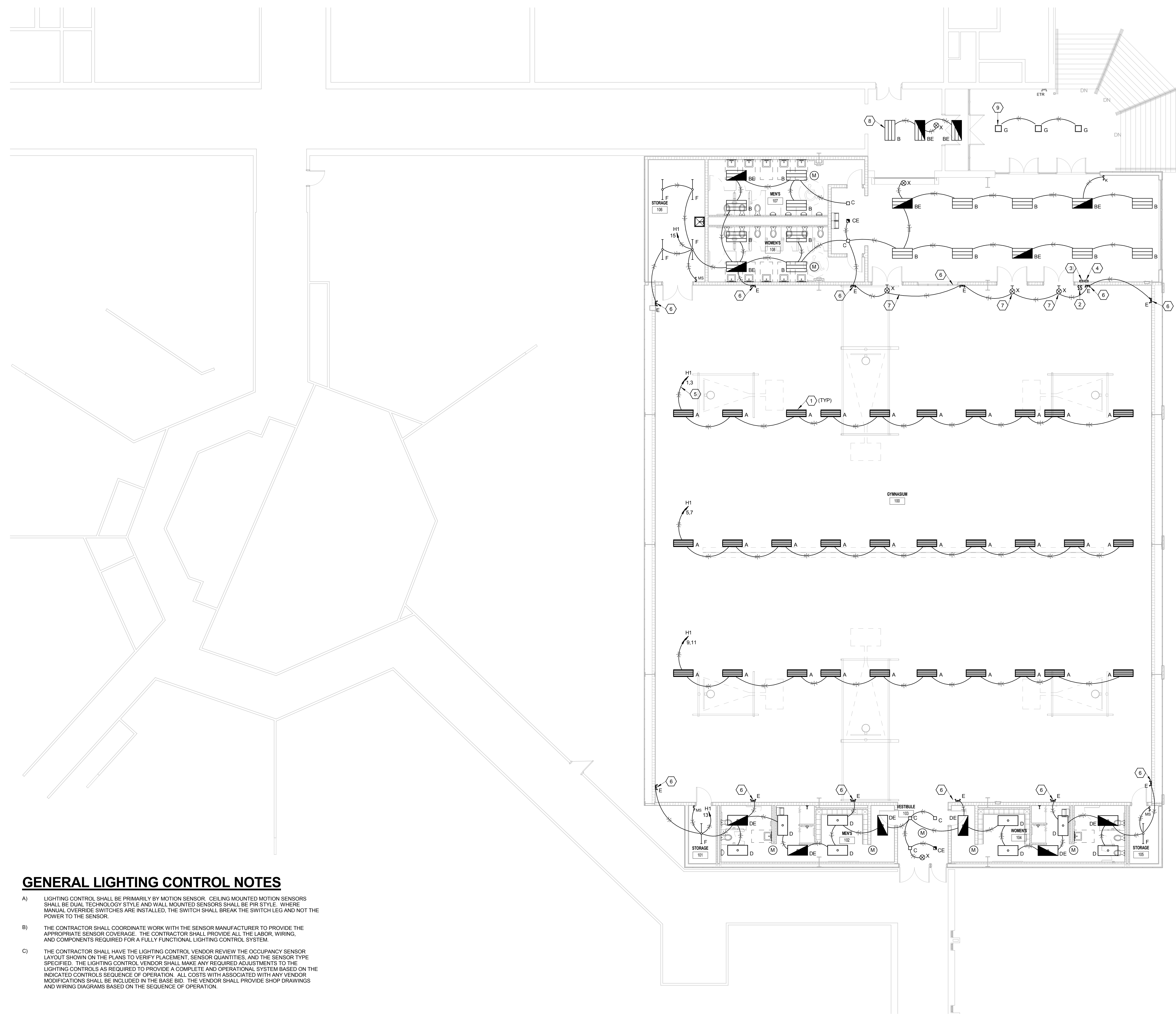


9/2/2014 12:00:17 PM C:\Users\kgerber\Documents\1307.04 - ROCKPORT HS GYMNASIUM_KGerber.rvt



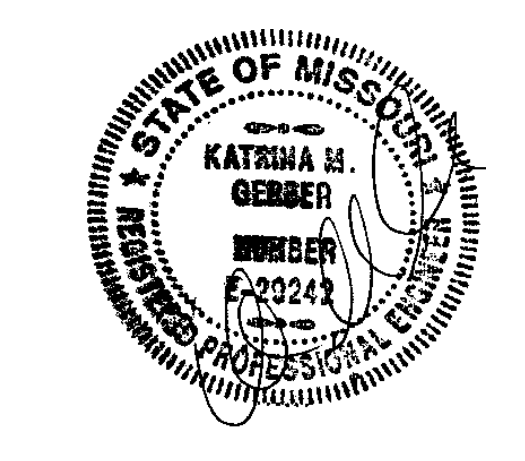
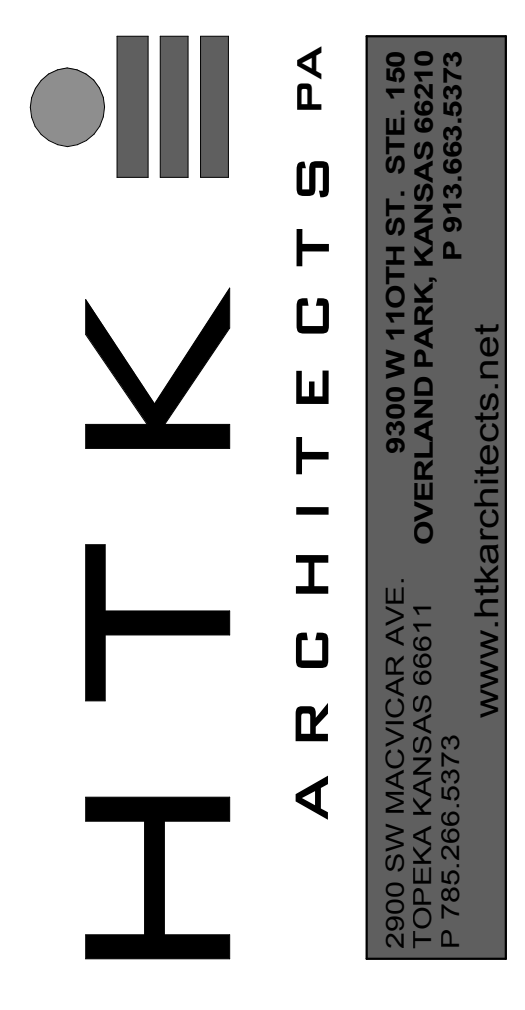
GENERAL LIGHTING CONTROL NOTES

- A) LIGHTING CONTROL SHALL BE PRIMARILY BY MOTION SENSOR. CEILING MOUNTED MOTION SENSORS SHALL BE DUAL TECHNOLOGY STYLE AND WALL MOUNTED SENSORS SHALL BE PIR STYLE. WHERE MANUAL OVERRIDE SWITCHES ARE INSTALLED, THE SWITCH SHALL BREAK THE SWITCH LEG AND NOT THE POWER TO THE SENSOR.
- B) THE CONTRACTOR SHALL COORDINATE WORK WITH THE SENSOR MANUFACTURER TO PROVIDE THE APPROPRIATE SENSOR COVERAGE. THE CONTRACTOR SHALL PROVIDE ALL THE LABOR, WIRING, AND COMPONENTS REQUIRED FOR A FULLY FUNCTIONAL LIGHTING CONTROL SYSTEM.
- C) THE CONTRACTOR SHALL HAVE THE LIGHTING CONTROL VENDOR REVIEW THE OCCUPANCY SENSOR LAYOUT SHOWN ON THE PLANS TO VERIFY PLACEMENT, SENSOR QUANTITIES, AND THE SENSOR TYPE SPECIFIED. THE LIGHTING CONTROL VENDOR SHALL MAKE ANY REQUIRED ADJUSTMENTS TO THE LIGHTING CONTROLS AS REQUIRED TO PROVIDE A COMPLETE AND OPERATIONAL SYSTEM BASED ON THE INDICATED CONTROLS SEQUENCE OF OPERATION. ALL COSTS WITH ASSOCIATED WITH ANY VENDOR MODIFICATIONS SHALL BE INCLUDED IN THE BASE BID. THE VENDOR SHALL PROVIDE SHOP DRAWINGS AND WIRING DIAGRAMS BASED ON THE SEQUENCE OF OPERATION.

1 FLOOR PLAN-LIGHTING
SCALE: 1/8" = 1'-0"

FLOOR PLAN NOTES

- 1 MOUNT FIXTURE TIGHT TO BOTTOM OF ANGLED TRUSS.
- 2 PROVIDE AND INSTALL LIGHT SWITCHES IN THE 4-GANG COMMON COVERPLATE WITH THE MOTORIZED COAL SWITCHES. REFERENCE FLOOR PLAN-POWER. ONE SWITCH SHALL CONTROL HIGH LEVEL LIGHTING CONTACTOR 'HL' AND THE OTHER SWITCH SHALL CONTROL LOW LEVEL LIGHTING CONTACTOR 'LL'.
- 3 PROVIDE AND INSTALL 4-POLE, ELECTRICALLY HELD LIGHTING CONTACTOR 'HL' IN A NEMA 1 ENCLOSURE ABOVE ACCESSIBLE CEILING.
- 4 PROVIDE AND INSTALL 4-POLE, ELECTRICALLY HELD LIGHTING CONTACTOR 'LL' IN A NEMA 1 ENCLOSURE ABOVE ACCESSIBLE CEILING.
- 5 ROUTE HOMERUNS THROUGH GYM LIGHTING CONTACTORS. ROUTE THE CIRCUIT CONNECTED TO THE (4) OUTBOARD LAMPS THROUGH HIGH LEVEL CONTACTOR 'HL' AND THE CIRCUIT CONNECTED TO THE (2) INBOARD LAMPS THROUGH LOW LEVEL CONTACTOR 'LL'.
- 6 PROVIDE AND INSTALL WIREGUARD FOR EMERGENCY LIGHT FIXTURE. MOUNT FIXTURE AT 8'-0" AFF.
- 7 PROVIDE AND INSTALL WIREGUARD FOR EXIT LIGHT FIXTURE.
- 8 CONNECT TO EXISTING CORRIDOR LIGHTING CIRCUIT.
- 9 CONNECT TO EXISTING EXTERIOR LIGHTING CIRCUIT PREVIOUSLY FEEDING AREA.



DATE:
● SEPTEMBER 2, 2014
REVISED DATE:
●
●
●

ROCKPORT R-2 HIGH SCHOOL GYMNASIUM ADDITION

ROCKPORT R-2 SCHOOLS
ROCKPORT R-2 - ROCKPORT HIGH SCHOOL - 600 S. NEBRASKA ST., ROCKPORT, MO

SHEET CONTENTS:
● FLOOR PLAN - LIGHTING

HTK PROJECT NUMBER:
● 1307.04.002

SHEET NUMBER:
E102



908 Broadway, Suite 200
Kansas City, MO 64105-1590
Ph: 816.842.2600
Fx: 816.842.4884
www.bgrengineers.com