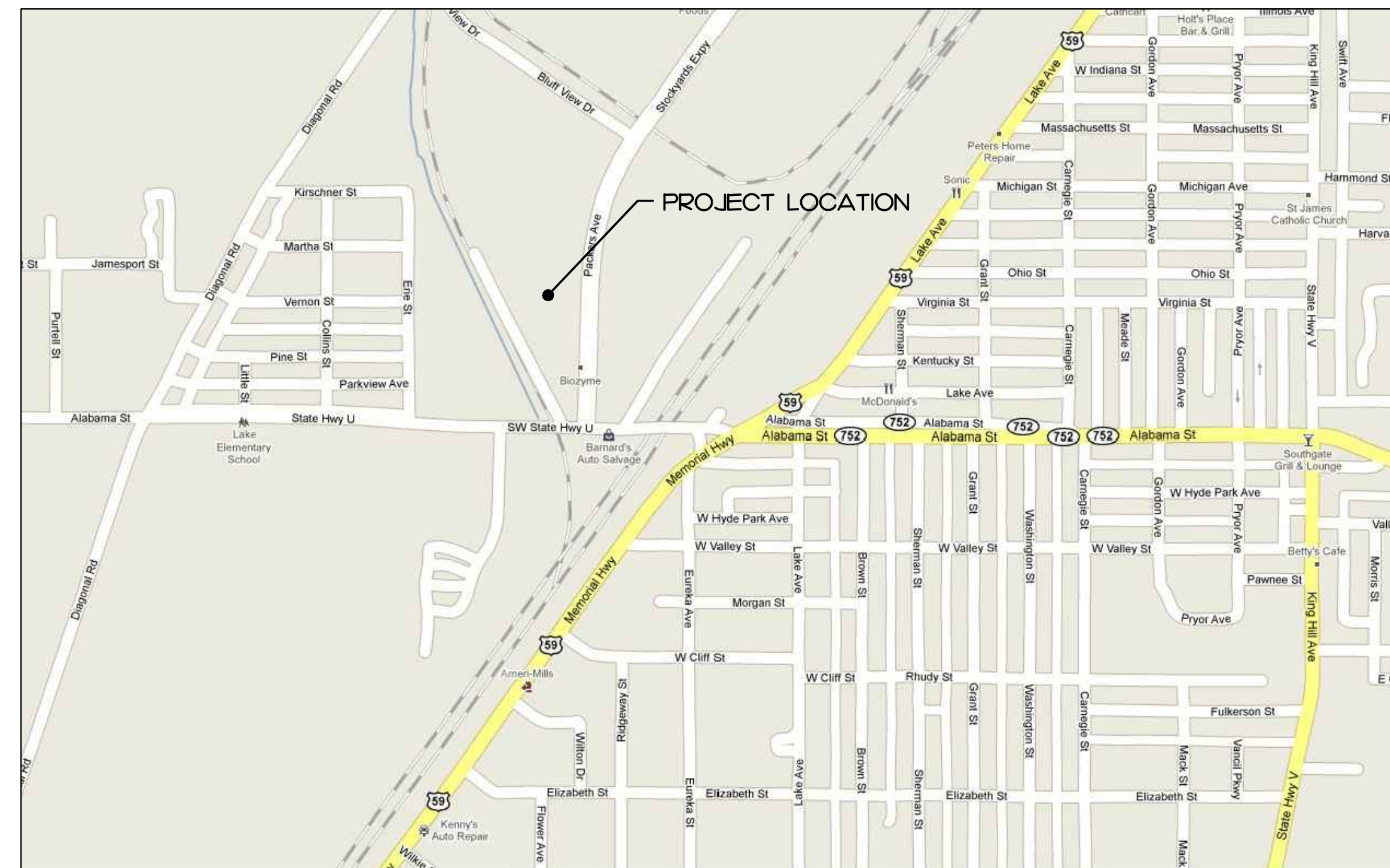
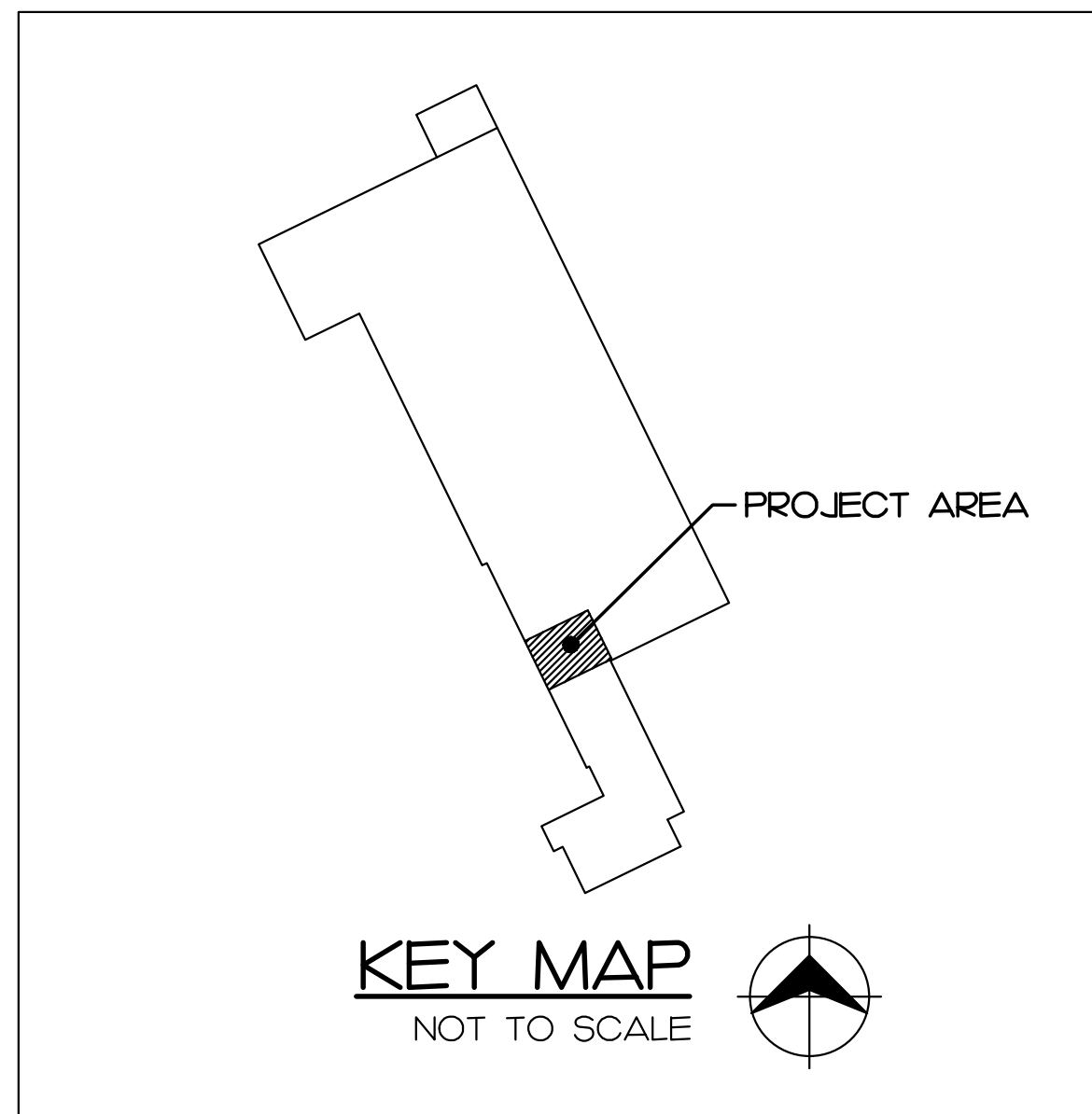


# OFFICE RENOVATIONS FOR BIOZYME INC. 6010 STOCKYARDS EXPRESSWAY ST. JOSEPH, MO 64504



### CODE REQUIREMENTS

- BUILDING CODE - 2012 INTERNATIONAL BUILDING CODE**
- PLUMBING CODE - 2012 UNIFORM PLUMBING CODE**
- MECHANICAL CODE - 2012 INTERNATIONAL MECHANICAL CODE**
- ELECTRICAL CODE - 2011 NATIONAL ELECTRIC CODE**
- CONSTRUCTION TYPE - 2B**
- USE GROUP - B - BUSINESS**
  - S-1 MODERATE HAZARD STORAGE**
  - F-1 MODERATE HAZARD FACTORY**
- RENOVATED AREA - 2,051 SF**
- TOTAL BUILDING AREA - 64,836 SF**
- OCCUPANT LOAD - 225 OCCUPANTS**
- FLOODWAY - ZONE B**
- ZONING - M2**

### DRAWING INDEX

- D1.0 - PARTIAL DEMOLITION PLAN/ DEMOLITION NOTES**
- A1.0 - PARTIAL FLOOR PLAN/ SCHEDULES/ INTERIOR ELEVATIONS**
- P1.0 - PARTIAL PLUMBING PLAN**
- M1.0 - PARTIAL MECHANICAL PLAN**
- E1.0 - PARTIAL POWER PLAN/ PARTIAL REFLECTED CEILING & LIGHTING PLAN**

**CREAL CLARK & SEIFERT**  
ARCHITECTS / ENGINEERS, I N C.  
919 Corby Street • Saint Joseph, Missouri 64501  
Phone: 816-364-2435 • Fax: 816-364-1273

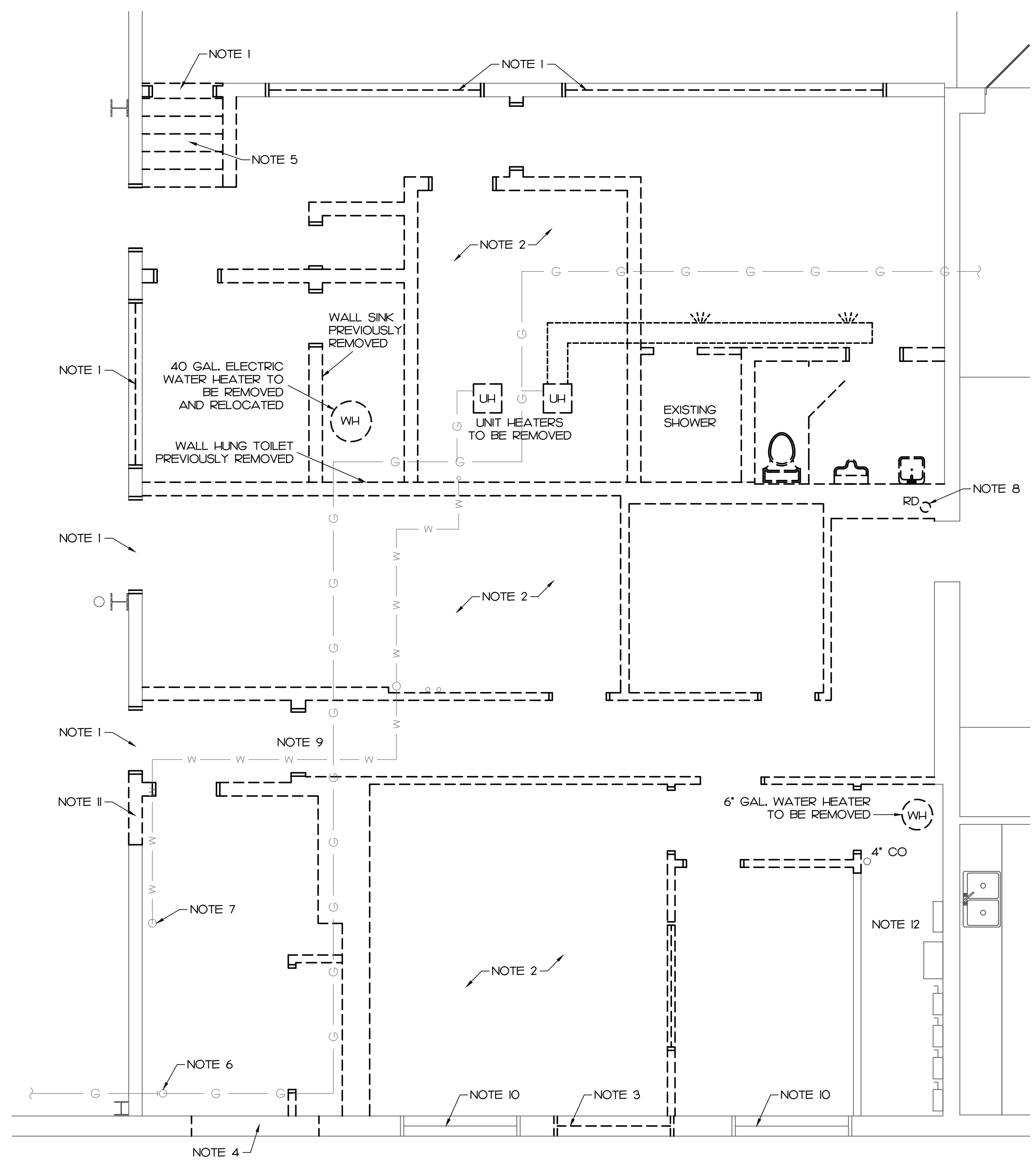
OFFICE RENOVATIONS  
FOR  
**BIOZYME**  
INC.  
6010 STOCKYARDS EXPRESSWAY  
ST. JOSEPH, MISSOURI

REVISIONS:	
1	
2	
3	
4	



PROJECT NUMBER:  
**14-303**

SHEET NUMBER:



**PARTIAL DEMOLITION PLAN**  
 1/4" = 1'-0"

**SHEET NOTES:**

- 1) REMOVE EXISTING DOOR/ WINDOWS THIS AREA. BLOCK UP OPENING.
- 2) REMOVE ALL INTERIOR PARTITIONS (FRAMED AND BLOCK).
- 3) REMOVE AND RELOCATE EXISTING WINDOW. BRICK & BLOCK OPENING TO MATCH EXISTING.
- 4) CUT NEW OPENING AS REQUIRED FOR RELOCATED WINDOW.
- 5) FILL EXISTING STAIR AND PROVIDE NEW 4" CONC. FLOOR SLAB TO MATCH EXISTING.
- 6) REWORK GAS LINE, THIS AREA, TO POSITION LINE IN WAREHOUSE, OUTSIDE OF OFFICE AREA. LINE MUST REMAIN TO SERVE ADDITIONAL EXISTING EQUIPMENT.
- 7) EXISTING WATER SUPPLY LINE, THIS AREA, TO REMAIN.
- 8) EXISTING ROOF DRAIN TO REMAIN.
- 9) EXISTING RTU ABOVE TO REMAIN. ALL RELATED DUCTWORK TO BE REMOVED.
- 10) EXISTING WINDOW TO REMAIN.
- 11) REMOVE EXISTING WALL THIS AREA, AS REQUIRED, FOR NEW DOOR.
- 12) EXISTING ELECTRICAL PANEL, TRANSFORMER AND DISCONNECT TO REMAIN.

**GENERAL PLUMBING NOTES:**

- A) ALL EXISTING PLUMBING DEVICES, INCLUDING BUT NOT LIMITED TO FIXTURES, PIPING, HANGERS, ETC. TO BE REMOVED UNLESS NOTED OTHERWISE. DISCONNECT AND/OR CAP-OFF ALL DEVICES AS REQUIRED IN A MANNER WHICH WILL NOT INTERFERE WITH NEW CONSTRUCTION OR EXISTING CONSTRUCTION TO REMAIN.

**GENERAL MECHANICAL NOTES:**

- A) ALL EXISTING HVAC EQUIPMENT, INCLUDING UNIT HEATERS, DUCTWORK, HANGERS, CONTROL DEVICES, EXHAUST FANS, ETC. TO BE REMOVED UNLESS NOTED OTHERWISE (UNO.). DISCONNECT AND / OR CAP OFF ALL DEVICES AS REQUIRED IN A MANNER WHICH WILL NOT INTERFERE WITH NEW OR EXISTING CONSTRUCTION TO REMAIN.

**GENERAL ELECTRICAL NOTES:**

- A) ALL EXISTING ELECTRICAL DEVICES, INCLUDING WIRING, CONDUITS, FIXTURES, BOXES, PANELS, ETC. TO BE REMOVED UNLESS OTHERWISE NOTED. DISCONNECT AND/OR CAP OFF ALL DEVICES AS REQUIRED IN A MANNER WHICH WILL NOT INTERFERE WITH NEW OR EXISTING CONSTRUCTION TO REMAIN.

NOTE: SOME EXISTING WATER LINES ABOVE THE CEILING ARE INSULATED WITH MATERIALS SUSPECTED TO CONTAIN ASBESTOS. MATERIAL SHOULD BE TESTED AND PROPERLY DISPOSED OF.

**CREAL CLARK & SEIFERT**  
 ARCHITECTS / ENGINEERS, I N C.  
 919 Corby Street • Saint Joseph, Missouri 64501  
 Phone: 816-364-2435 • Fax: 816-364-1273

OFFICE RENOVATIONS  
 FOR  
**BIOZYME**  
 INC.  
 6010 STOCKYARDS EXPRESSWAY  
 ST. JOSEPH, MISSOURI

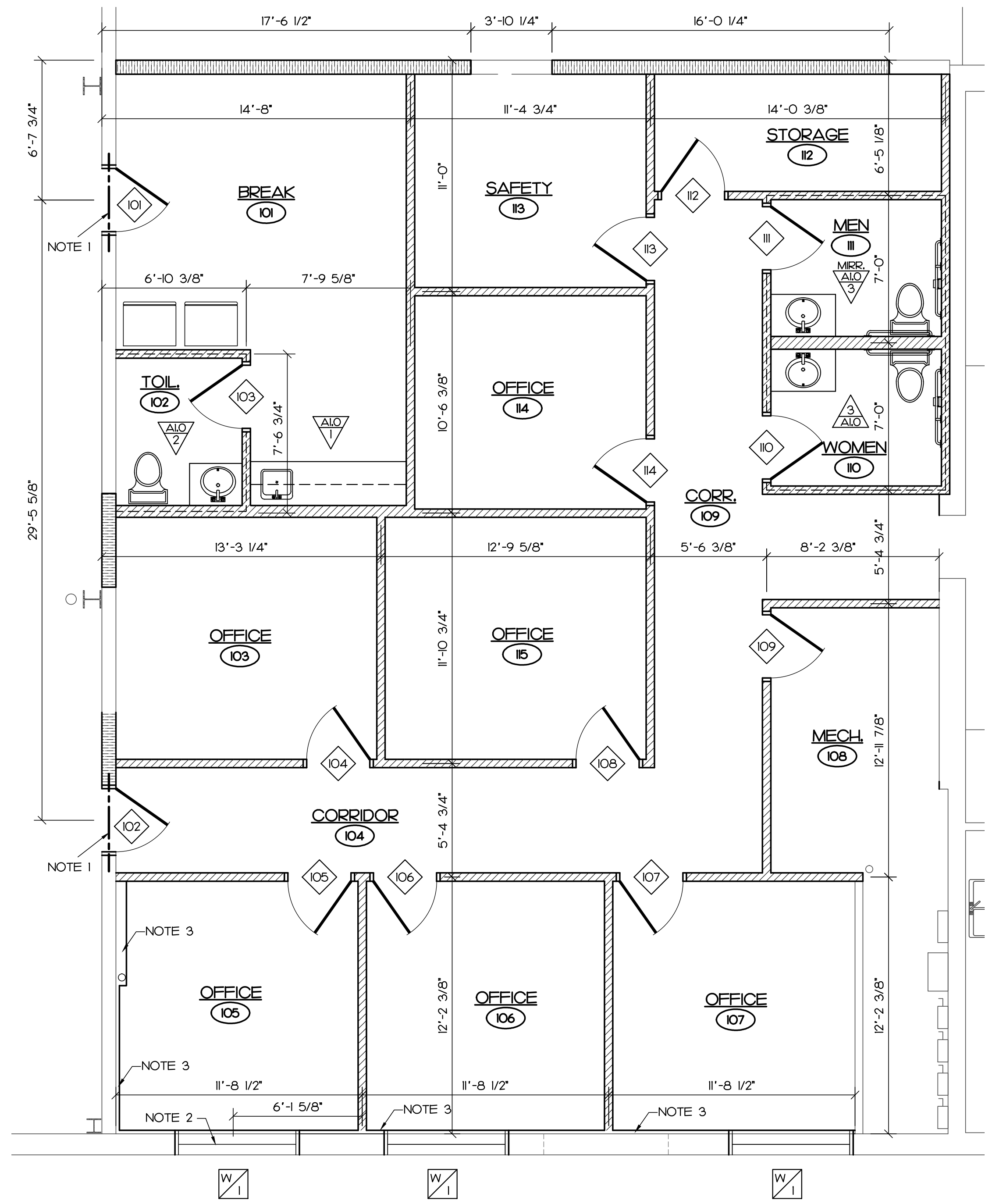
REVISIONS:	
1	
2	
3	
4	

DRAWN BY: JAN  
 CHECKED BY: TSC  
 DATE: 02/06/2015

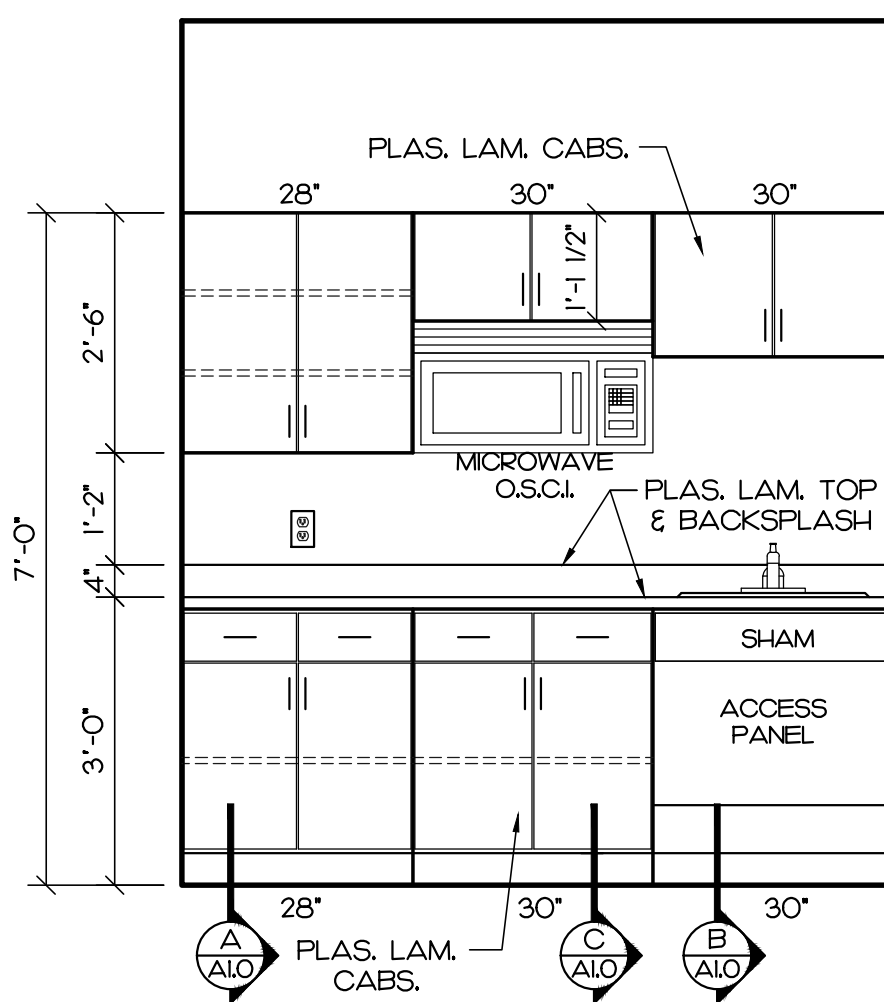


PROJECT NUMBER:  
 14-303  
 SHEET NUMBER:  
 D1.0

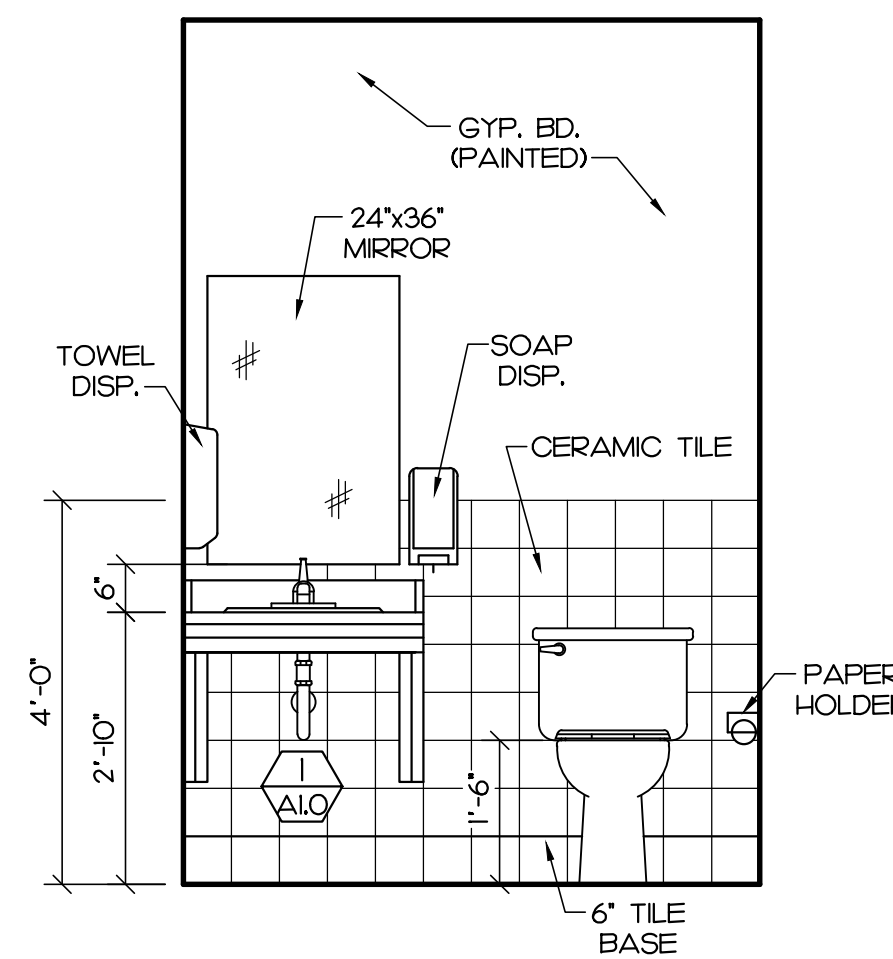
Path: O:\Creal-Clark Projects\Projects 2014\14-303 Biozyme Office Renovations\14-303-D1.dwg  
 Plotted by: CCS-0021  
 Plot time: 2/9/2015 11:29:56 AM  
 Layout Name: D1



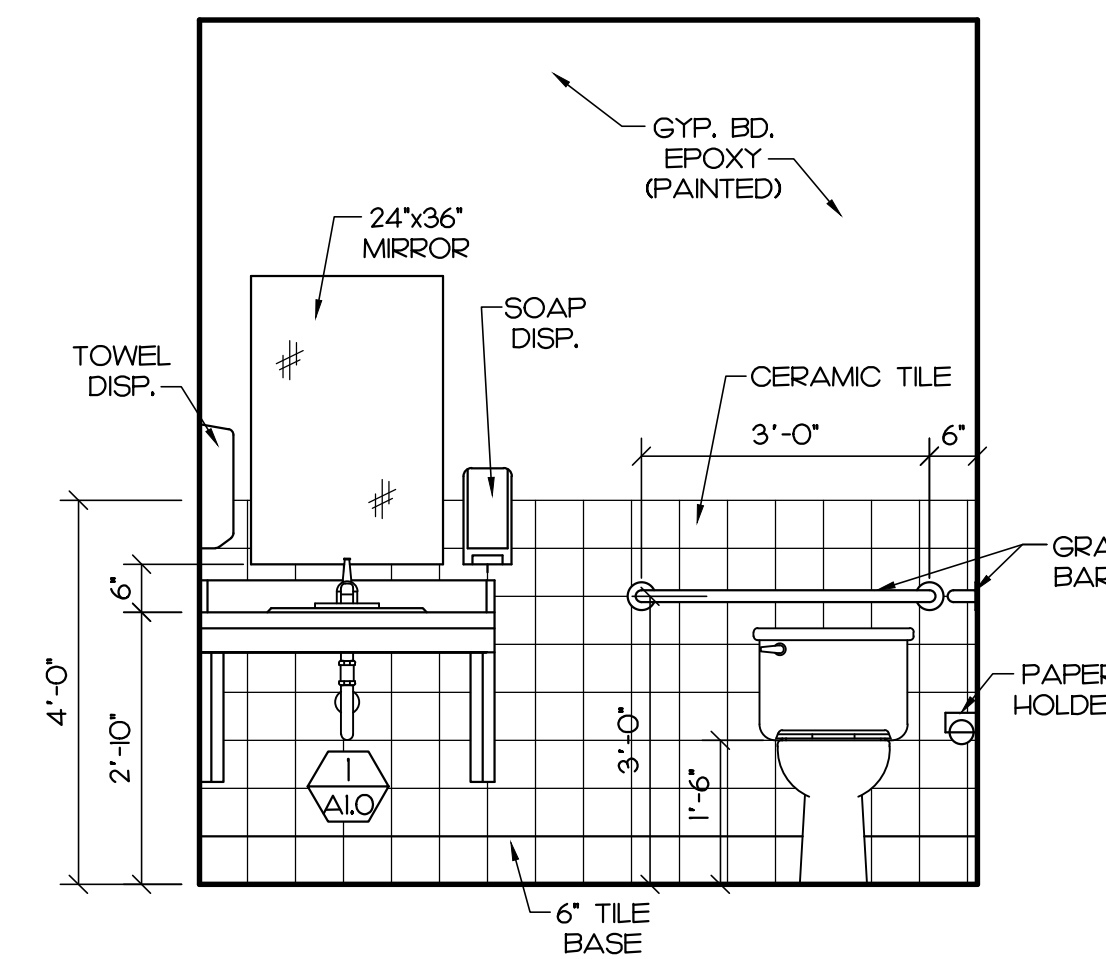
**PARTIAL FLOOR PLAN**  
1/4" = 1'-0"



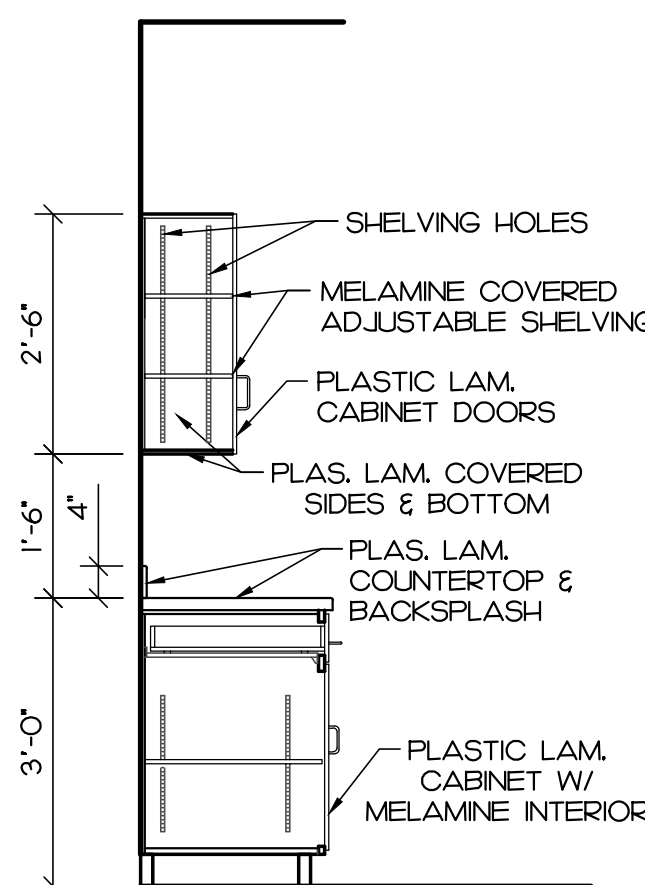
**INTERIOR ELEVATION**  
1/2" = 1'-0" A1.O



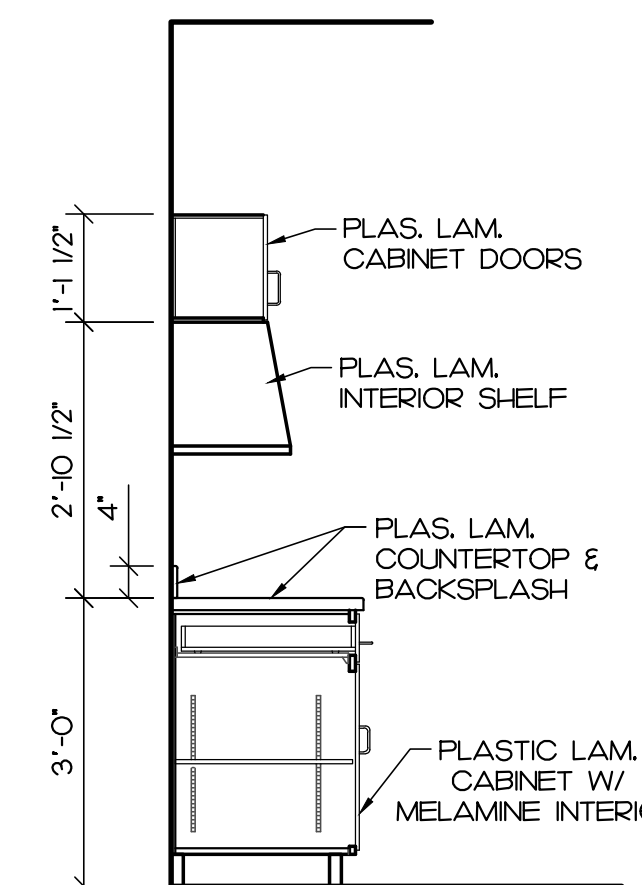
**INTERIOR ELEVATION**  
1/2" = 1'-0" A2.O



**INTERIOR ELEVATION**  
1/2" = 1'-0" A3.O



**CABINET SECTION A**  
1/2" = 1'-0" A1.O



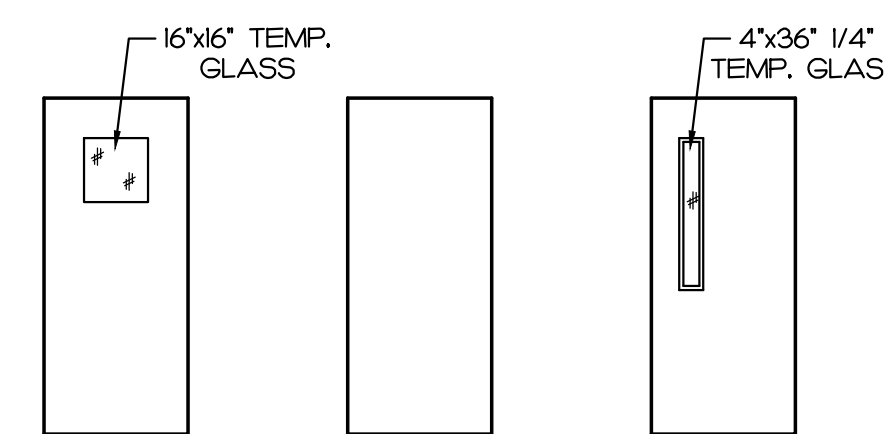
**CABINET SECTION B**  
1/2" = 1'-0" A1.O

**SHEET NOTES:**

- 1) PROVIDE NEW STILL LINTEL (2-L6x3 1/2x3/8 B TO B) AT NEW DOOR OPENING. BEAR 8" MIN. EACH SIDE.
- 2) PROVIDE NEW STEEL LINTEL (W8x10 w/ 3/8" PLATE) AT NEW WINDOW. BEAR 8" MIN. EACH END.
- 3) FUR EXISTING WALLS AND AROUND WATER LINE.

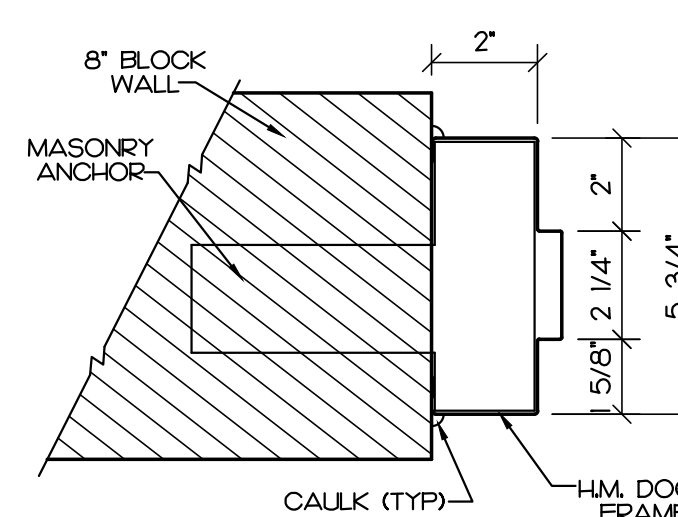
**WALL LEGEND**

- EXISTING CONSTRUCTION (TO REMAIN)
- EXISTING CONSTRUCTION (TO BE REMOVED)
- NEW INTERIOR WALL (8" CMU's w/ #4's VERT. • 48" C.C. HORIZ. REINF. • 16" C.C. EXTENDED TO UNDERSIDE OF ROOF DECK ABOVE)
- NEW PARTITION WALL (3 5/8" MTL. STUDS • 16" C.C. W/ 5/8" GYP. BD. E.S. UNQ.)
- R-13 ACOUSTIC BATT INSULATION

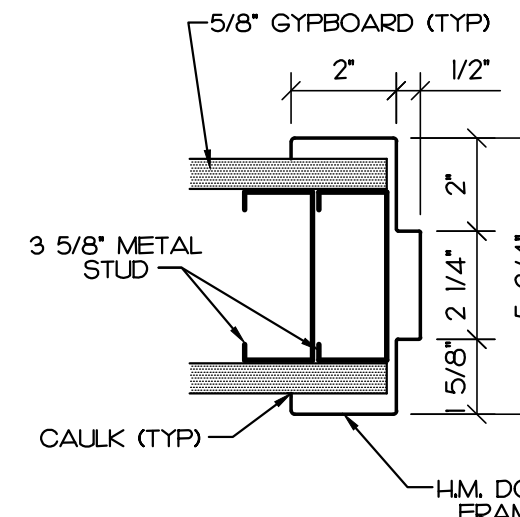


**DOOR TYPES**

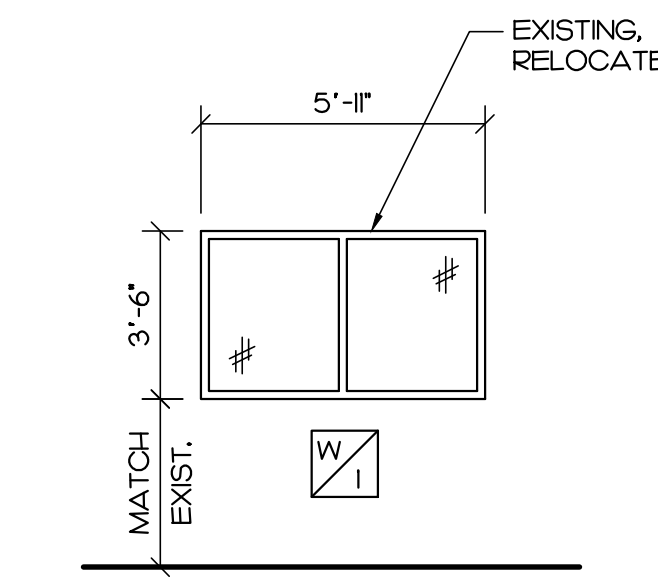
1/4" = 1'-0"



**DOOR DETAIL 1**  
3'-1'-0" A1.O



**DOOR DETAIL 2**  
3'-1'-0" A2.O



**WINDOW TYPES**  
1/4" = 1'-0"

ROOM NUMBER	ROOM NAME	FINISH SCHEDULE										REMARKS
		FLOOR	BASE	NORTH	EAST	SOUTH	WEST	CEILING	CEILING HEIGHT	DOOR	TRIM	
101	BREAK ROOM	2	1	1	1	1	1	1	1	1	1	
102	TOILET	2	2	2	2	2	2	2	2	2	2	
103	OFFICE	3	1	1	1	1	1	1	1	1	1	
104	CORRIDOR	3	1	1	1	1	1	1	1	1	1	
105	OFFICE	3	1	1	1	1	1	1	1	1	1	
106	OFFICE	3	1	1	1	1	1	1	1	1	1	
107	OFFICE	3	1	1	1	1	1	1	1	1	1	
108	MECHANICAL	1	3	1	1	1	1	1	1	1	1	
109	CORRIDOR	3	1	1	1	1	1	1	1	1	1	
110	WOMENS	2	2	2	2	2	2	2	2	2	2	
111	MENS	2	2	2	2	2	2	2	2	2	2	
112	STORAGE	2	1	1	1	1	1	1	1	1	1	
113	SAFETY	3	1	1	1	1	1	1	1	1	1	
114	OFFICE	3	1	1	1	1	1	1	1	1	1	
115	OFFICE	3	1	1	1	1	1	1	1	1	1	

FINISH SCHEDULE LEGEND		
<b>FLOOR</b>	<b>BASE</b>	<b>WALLS</b>
1. STAINED CONCRETE	1. COVED VINYL (4" RUBBER)	1. GYPBOARD (PAINT)
2. VC TILE	2. TILE	2. CERAMIC TILE 4FT AFF
3. CARPET	3. NONE	3.
<b>CEILING</b>	<b>DOORS</b>	<b>TRIM</b>
1. 2x4 ACOUST. LAY-IN	1. STAIN	1. STAIN
2.	2. PAINT	2. PAINT

DOOR NUMBER	DOOR SIZE	DOOR				FRAME		REMARKS
		ALUMINUM	METAL	WOOD	TYPE	HARDWARE	DETAIL	
101	3'0"x7'0" x 3/4"	•	•	•	A	1	1	4" HEAD ON FRAME
102	3'0"x7'0" x 3/4"	•	•	•	B	2	2	4" HEAD ON FRAME
103	3'0"x6'6" x 3/4"	•	•	•	C	3	2	
104	3'0"x6'6" x 3/4"	•	•	•	C	3	2	
105	3'0"x6'6" x 3/4"	•	•	•	C	3	2	
106	3'0"x6'6" x 3/4"	•	•	•	C	3	2	
107	3'0"x6'6" x 3/4"	•	•	•	C	3	2	
108	3'0"x6'6" x 3/4"	•	•	•	C	3	2	
109	3'0"x6'6" x 3/4"	•	•	•	C	3	2	
110	3'0"x6'6" x 3/4"	•	•	•	C	3	2	
111	3'0"x6'6" x 3/4"	•	•	•	C	3	2	
112	3'0"x6'6" x 3/4"	•	•	•	C	3	2	
113	3'0"x6'6" x 3/4"	•	•	•	C	3	2	
114	3'0"x6'6" x 3/4"	•	•	•	C	3	2	

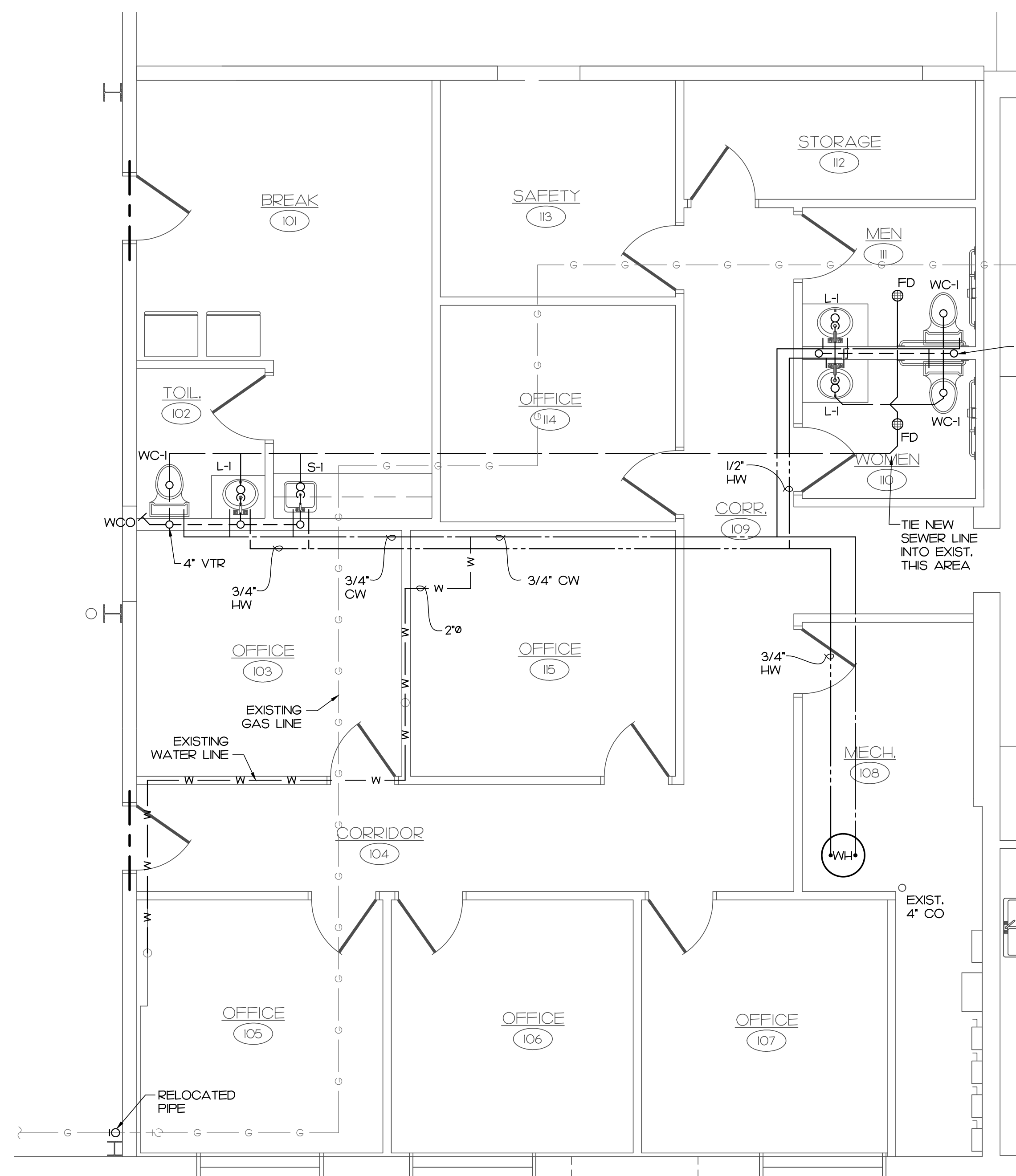
HARDWARE SCHEDULE			
1	2	3	4
PASSAGE SET 1 1/2 PR. HINGES STOP CLOSER	PRIVACY SET 1 1/2 PR. HINGES STOP	KEYED LOCKSET 1 1/2 PR. HINGES STOP	

REVISIONS:	
1	
2	
3	
4	

DRAWN BY: JAN  
CHECKED BY: TSC  
DATE: 02/06/2015



Path: Q:\Creal-Clark Projects\Projects 2014\14-303 Biozyme Office Renovations\14-303-A1.dwg  
Plotted by: CCS-0021  
Plot time: 2/26/2015 11:30:00 AM  
Layout Name: A1.O



**PLUMBING SYMBOLS LEGEND**

---	COLD WATER SUPPLY LINE (CW)	⊕	GAS PRESSURE REGULATOR
---	HOT WATER SUPPLY LINE (HW)	⊕	BALL VALVE
---	HOT WATER RETURN (HWR)	⊕	CHECK VALVE
— G — G —	NATURAL GAS (G)	●	VENT RISER
---	SANITARY SEWER LINE (S)	⊕	FLOOR DRAIN
---	VENT PIPING (V)	⊕	FLOOR CLEANOUT
↑ ↓	RISE AND FALL IN PIPING	⊕	EXTERIOR CLEANOUT
⊕	SHUTOFF VALVE	⊕	RECIRCULATION PUMP
⊕	GAS COCK		
⊕	BALL VALVE		
⊕	P-TRAP		
⊕	WALL CLEANOUT		
⊕	HOSE BIB OR NONFREEZE WALL HYDRANT		
⊕	ELBOW FITTING		
⊕	T-FITTING		

**ABBREVIATIONS**

AFF	ABOVE FINISHED FLOOR
FFA	FROM FLOOR ABOVE
FFB	FROM FLOOR BELOW
TFA	TO FLOOR ABOVE
TFB	TO FLOOR BELOW
WH	WATER HEATER
RPZ	REDUCED PRESSURE ZONE
VBF	VENT BELOW FLOOR
VTR	VENT THRU ROOF

**GENERAL PLUMBING NOTES:**

- A) ALL MATERIAL, WORKMANSHIP & INSTALLATION TO BE IN ACCORDANCE WITH THE 2012 UNIFORM PLUMBING CODE.
- B) ALL WASTE AND VENT PIPING TO BE SCHEDULE 40 PVC AS PERMITTED BY CODE. SIZE AS INDICATED ON DRAWINGS.
- C) ALL WATER SUPPLY LINES TO BE COPPER (INSULATED). ALL DOMESTIC WATER SUPPLY PIPING ABOVE SLAB AND INSIDE THE BUILDING SHALL BE TYPE "L" HARD TEMPER COPPER. ALL DOMESTIC WATER SUPPLY PIPING 2" AND SMALLER BELOW SLAB SHALL BE TYPE "K" SOFT TEMPER COPPER TUBING. SIZE AS INDICATED ON THE DRAWINGS.
- D) PROVIDE SUPPLY LINE SHUT-OFF VALVES AT EACH FIXTURE.
- E) ALL GAS PIPING ABOVE GRADE, 3 INCH AND LARGER, SHALL BE BLACK STEEL PIPE WITH WELDED FITTINGS AND JOINTS, 2 1/2 INCH AND SMALLER SHALL BE BLACK STEEL PIPE WITH THREADED MALLEABLE IRON FITTINGS. (PLASTIC COAT ALL PIPING BELOW GRADE)
- F) EQUIPMENT EQUAL TO THAT SCHEDULED MAY BE SUBSTITUTED WITH THE APPROVAL OF THE ARCHITECT.
- G) ALL EXISTING PLUMBING DEVICES, INCLUDING BUT NOT LIMITED TO FIXTURES, PIPING, HANGERS, ETC. TO BE REMOVED UNLESS NOTED OTHERWISE. DISCONNECT AND/OR CAP-OFF ALL DEVICES AS REQUIRED IN A MANNER WHICH WILL NOT INTERFERE WITH NEW CONSTRUCTION OR EXISTING CONSTRUCTION TO REMAIN.

**PLUMBING FIXTURE SCHEDULE**

MARK	MANUFACTURER	MODEL NO.	DESCRIPTION
WC-1	KOHLER	K-3889	ADA ACCESSIBLE, FLOOR MOUNTED, TANK TYPE WATER CLOSET WITH CHURCH # 9500SSC SEAT LESS COVER
L-1	KOHLER	K-2196-4	ADA ACCESSIBLE, 20-1/4" x 17-1/2" COUNTERTOP MOUNTED LAVATORY WITH CHICAGO FAUCET # 802-VCP FAUCET & TRUEBRO #102 INSULATION KIT
S-1	ELKAY	ELUHAD 1916	19"x16"x5 1/2" ADA UNDERMOUNT SINGLE COMPARTMENT 18 GAUGE TYPE 304 SS SINK WITH CHICAGO FAUCET # 20-ACP FAUCET
FD	WADE	1100STD6	CAST IRON FLOOR DRAIN WITH CLAMPING COLLAR AND 6" NICKEL BRONZE ADJUSTABLE STRAINER
WCO	WADE	8560E	CAST IRON CLEANOUT TEE WITH COUNTERSUNK PLUG AND # 8480R 6" ACCESS COVER

**FIXTURE BRANCH CONNECTION SCHEDULE**

FIXTURE	COLD WATER	HOT WATER	WASTE	VENT
WATER CLOSET - FLUSH VALVE (WC-1, WC-2)	1"	---	3"	2"
LAVATORY (L-1)	1/2"	1/2"	2"	1-1/2"
FLOOR DRAIN (FD)	---	---	2"	1-1/2"

**PARTIAL PLUMBING PLAN**  
1/4" = 1'-0"

**CREAL CLARK & SEIFERT**  
ARCHITECTS / ENGINEERS, I N C.  
919 Corby Street • Saint Joseph, Missouri 64501  
Phone: 816-864-2435 • Fax: 816-364-1273

OFFICE RENOVATIONS  
FOR  
**BIOZYME**  
INC.  
6010 STOCKYARDS EXPRESSWAY  
ST. JOSEPH, MISSOURI

REVISIONS:

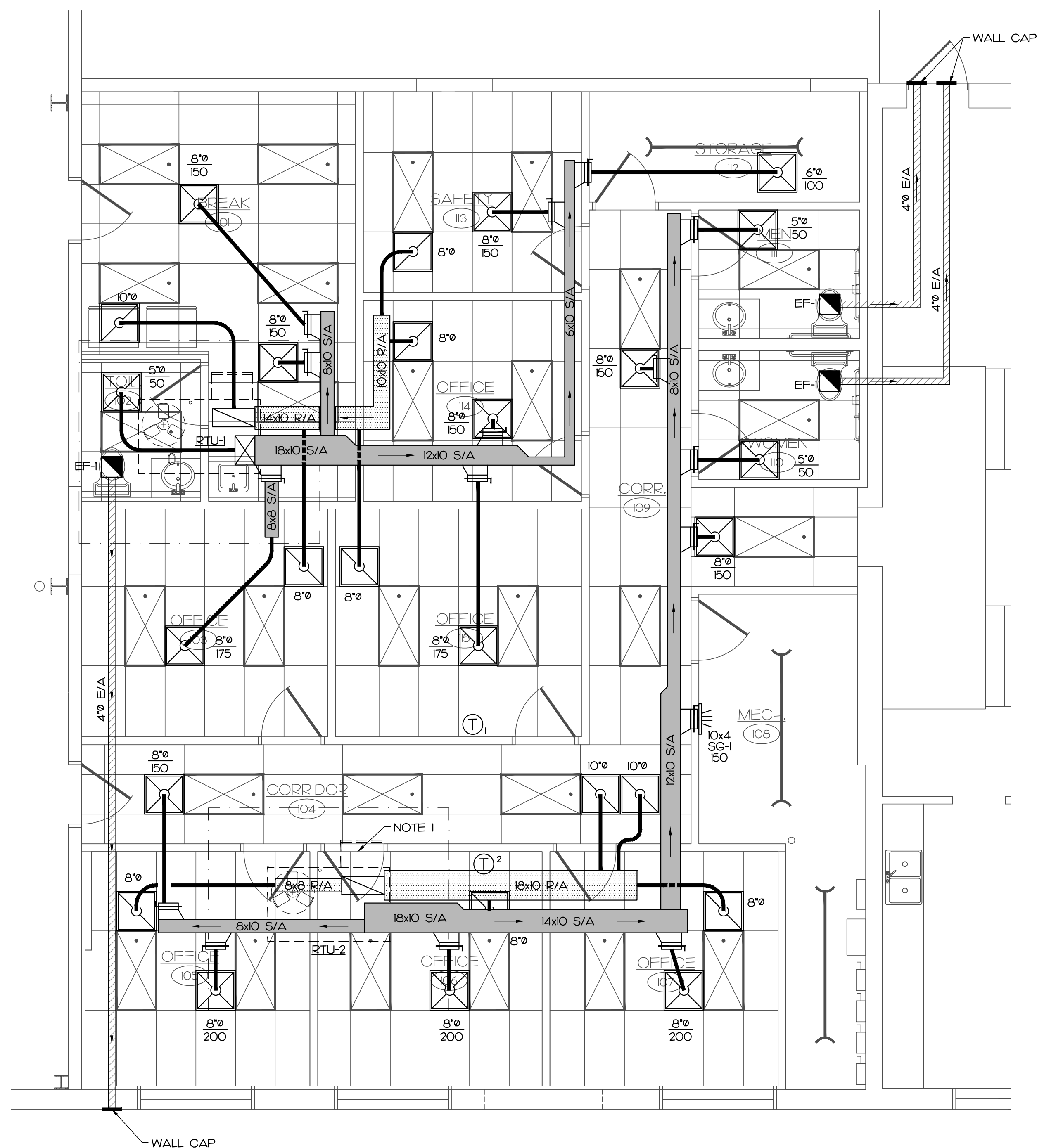
1	
2	
3	
4	

DRAWN BY: JAN  
CHECKED BY: TSC  
DATE: 02/06/2015



PROJECT NUMBER:  
14-303  
SHEET NUMBER:  
PI.0

Path: Q:\Creal-Clark Projects\Projects 2014\14-303 Biozyme Office Renovations\14-303-PI.dwg  
Plotted by: CCS-0021  
Plot time: 2/9/2015 11:30:05 AM  
Display Name: P10



**PARTIAL MECHANICAL PLAN**  
1/4" = 1'-0"

**MECHANICAL SYMBOLS LEGEND**

- INSULATED FLEXIBLE DUCT (8' MAX. LENGTH)
- BRANCH DUCT WITH 45° TAP & MANUAL VOLUME DAMPER
- 24 x 24 SUPPLY DIFFUSER (TITUS # TMS OR EQUAL)  
NECK SIZE AND CFM AS INDICATED ON THE DRAWINGS
- 24 x 24 RETURN GRILLE (TITUS # PAR OR EQUAL)  
NECK SIZE AS INDICATED ON THE DRAWINGS
- MANUAL DAMPER W/ TAP
- EXHAUST FAN
- PROGRAMMABLE THERMOSTAT • 54" AFF.  
WHITE ROGERS IF80-0471 5+2
- 20x6 SG-1 SUPPLY GRILLE (TITUS "JFA" OR EQUAL) SIZE AND CFM AS  
INDICATED ON DRAWINGS
- S/A SUPPLY AIR
- R/A RETURN AIR
- E/A EXHAUST AIR
- F/A FRESH AIR

**GENERAL MECHANICAL NOTES:**

- A) ALL MATERIAL, WORKMANSHIP & INSTALLATION TO BE IN ACCORDANCE WITH THE 2012 INTERNATIONAL MECHANICAL CODE.
- B) ALL DUCTWORK TO BE 26 GA. MINIMUM GALVANIZED STEEL SHEET METAL WITH 1/2" INTERIOR INSULATION, OR INSULATED FLEX-DUCT. SIZE AS INDICATED ON THE DRAWINGS ARE INSIDE CLEAR DIMENSIONS.
- C) DO NOT SUPPORT CEILING GRID, CONDUITS, PIPES, ETC. FROM DUCTWORK.
- D) CONTRACTOR TO BALANCE SYSTEM TO DESIGN CFM INDICATED.
- E) EQUIPMENT EQUAL TO THAT SCHEDULED MAY BE SUBSTITUTED WITH THE APPROVAL OF THE ARCHITECT.
- F) ALL EXISTING HVAC EQUIPMENT, INCLUDING UNIT HEATERS, DUCTWORK, HANGERS, CONTROL DEVICES, EXHAUST FANS, ETC. TO BE REMOVED UNLESS NOTED OTHERWISE (I.N.O.). DISCONNECT AND / OR CAP OFF ALL DEVICES AS REQUIRED IN A MANNER WHICH WILL NOT INTERFERE WITH NEW OR EXISTING CONSTRUCTION TO REMAIN.

**SHEET NOTES:**

- 1) EXISTING RTU-2 TO REMAIN. REWORK ALL EXISTING DUCTWORK AND REPLACE AS INDICATED ON THE DRAWINGS.

**HVAC EQUIPMENT SCHEDULE**

MARK	MANUFACTURER	MODEL NUMBER	E.S.P. (W.G.)	CFM	COOLING		HEATING			ELECTRICAL				NOTES
					TOTAL BTUH	NOM. TONS	INPUT	OUTPUT	KW	VOLT.	PHASE	MCA	MOCP	
RTU-1	CARRIER	48 TF E 004 --- 501	0.6	1100	36,000	3	74,000	59,200	-	208	3	17.7	25	2, 3, 4 & 5
RTU-2	CARRIER	48 TF E 004 --- 501	0.6	1200	36,000	3	74,000	59,200	-	208	3	17.7	25	EXISTING TO REMAIN
EF-1	BROAN	684	0.125	78	---	---	---	---	-	120	1	.80	-	1

NOTES:  
 1. PROVIDE WITH HOODED WALL CAP AND DAMPER.  
 2. PROVIDE WITH ECONOMIZER SET TO MINIMUM 150 CFM OF OUTSIDE AIR, HAIL GUARDS AND LOW AMBIENT CONTROL.  
 3. FIELD INSTALL UNIT MOUNTED DISCONNECT AND CONVENIENCE OUTLET.  
 4. ROUTE CONDENSATE TO NEAREST ROOF DRAIN AND DISCHARGE WITH 1" MINIMUM AIR GAP.  
 5. PROVIDE WITH ROOF CURB AND COORDINATE EXACT MOUNTING LOCATION WITH DRAWINGS.

**CREAL CLARK & SEIFERT**  
ARCHITECTS / ENGINEERS, I N C.  
919 Corby Street • Saint Joseph, Missouri 64501  
Phone: 816-364-2435 • Fax: 816-364-1273

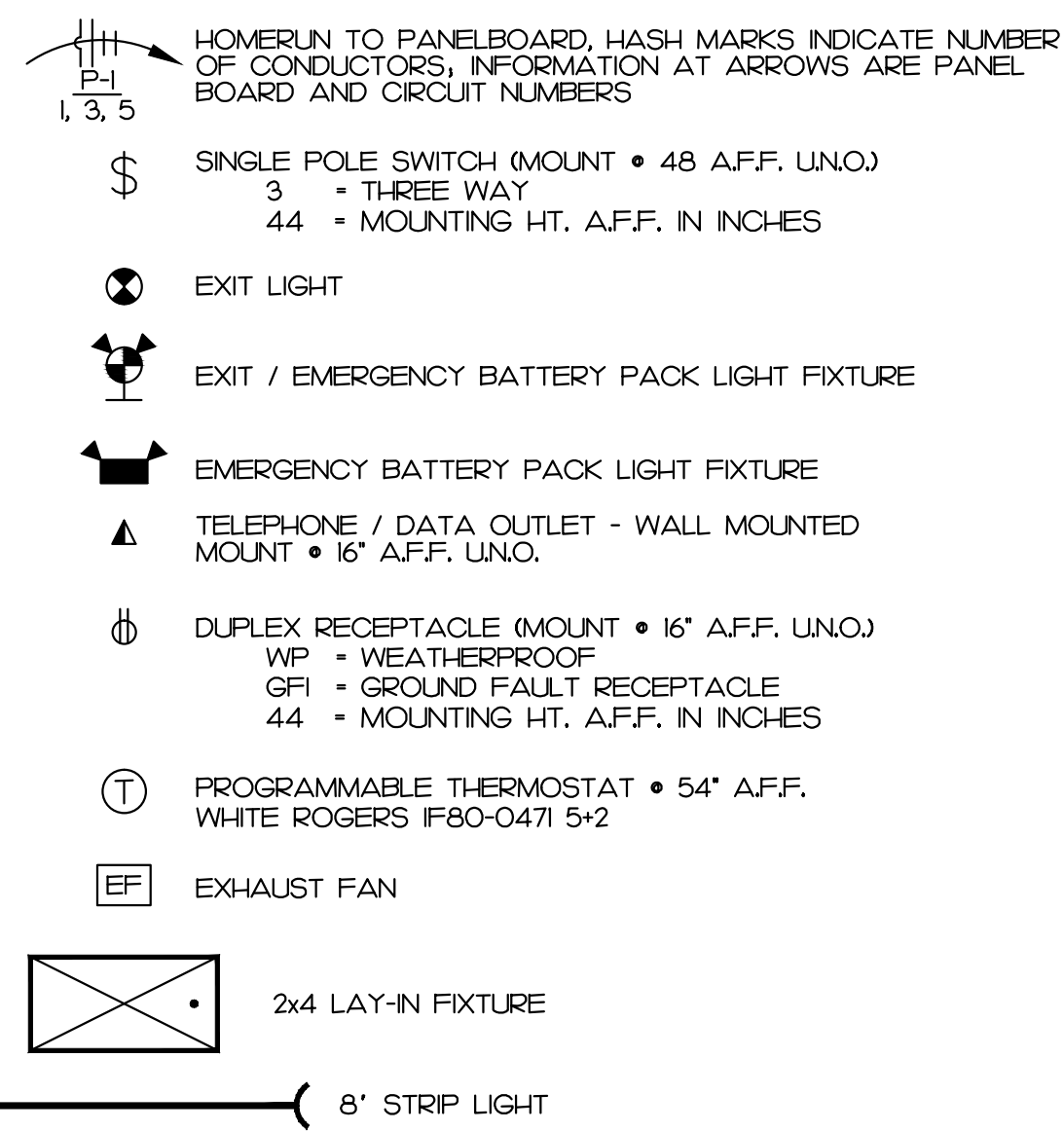
OFFICE RENOVATIONS  
FOR  
**BIOZYME INC.**  
6010 STOCKYARDS EXPRESSWAY  
ST. JOSEPH, MISSOURI

REVISIONS:  
 1  
 2  
 3  
 4  
 DRAWN BY: JAN  
 CHECKED BY: TSC  
 DATE: 02/06/2015



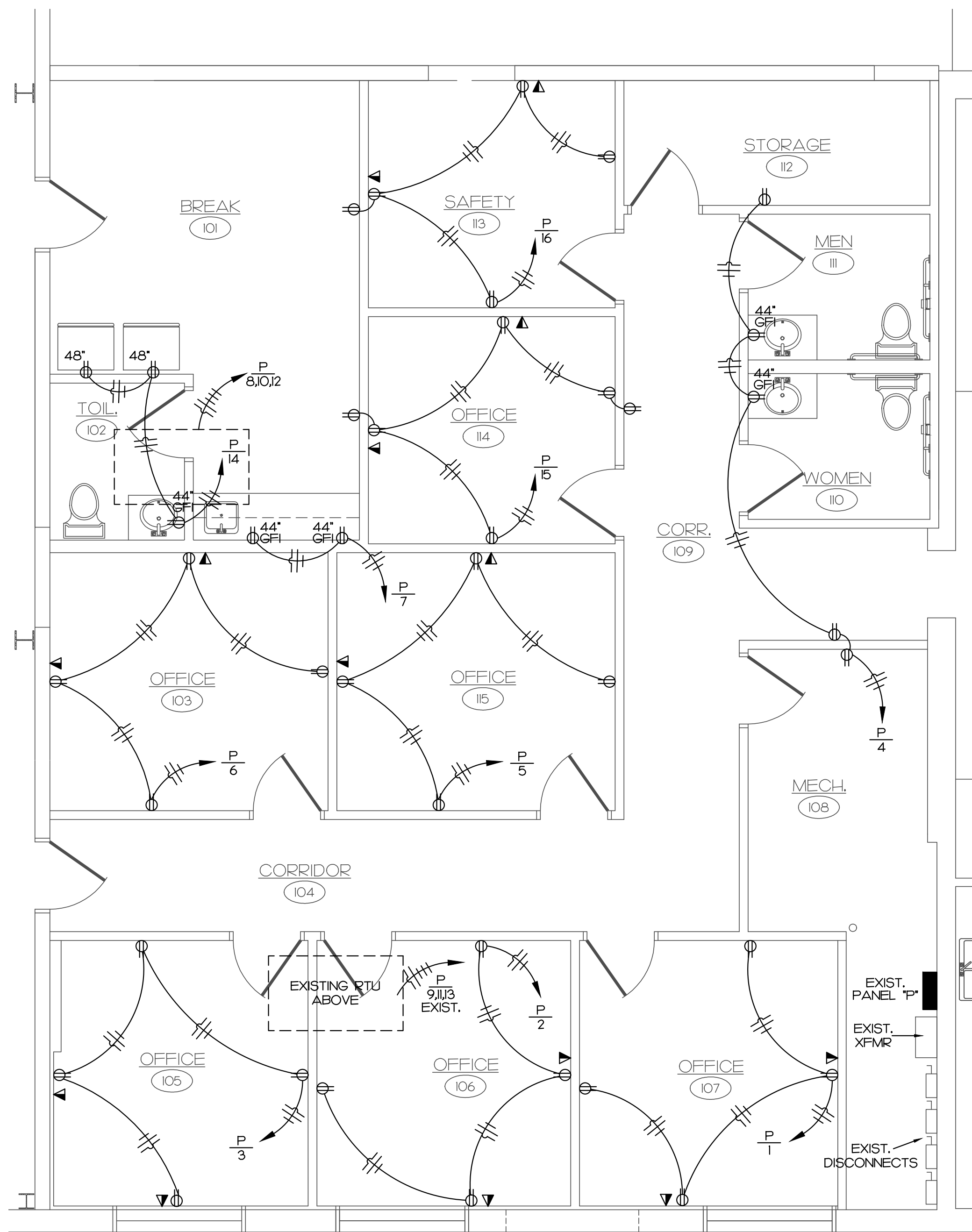
PROJECT NUMBER:  
14-303  
SHEET NUMBER:  
M.I.O

**ELECTRICAL SYMBOL LEGEND:**

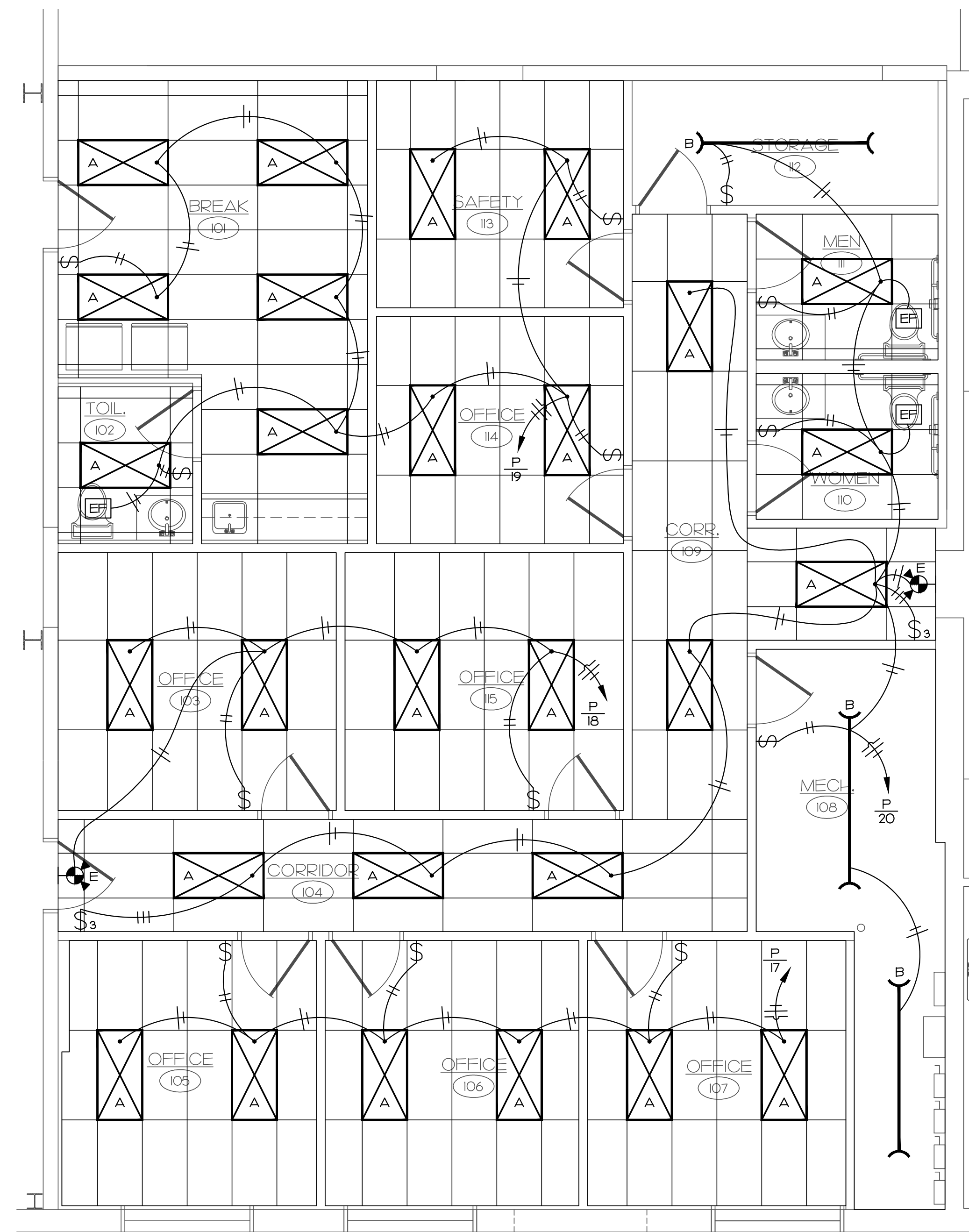


**GENERAL ELECTRICAL NOTES:**

- A) ALL MATERIAL, WORKMANSHIP AND INSTALLATION SHALL BE IN ACCORDANCE WITH THE 2011 NATIONAL ELECTRIC CODE.
- B) ALL ELECTRICAL CONDUCTORS TO BE COPPER, TYPE THWN, THW IN CONDUIT.
- C) ALL BRANCH CIRCUIT WIRING SHALL NOT BE SMALLER THAN #12 AWG WIRE.
- D) EQUIPMENT EQUAL TO THE SCHEDULED MAY BE SUBSTITUTED WITH THE APPROVAL OF THE ARCHITECT / ENGINEER.
- E) CONNECT EXIT / EMERGENCY LIGHT FIXTURES TO NEAREST UN-SWITCHED CIRCUITRY OF AREA SERVED.
- F) ALL EXISTING ELECTRICAL DEVICES, INCLUDING WIRING, CONDUITS, FIXTURES, ETC. TO BE REMOVED UNLESS OTHERWISE NOTED, DISCONNECT AND/OR CAP OFF ALL DEVICES AS REQUIRED IN A MANNER WHICH WILL NOT INTERFERE WITH NEW OR EXISTING CONSTRUCTION TO REMAIN.
- G) PROVIDE GANG BOX WITH 3/4" EMT CONDUIT STUBBED TO ABOVE CEILING FOR DATA / TELEPHONE RECEPTACLES, TYPICAL UNLESS NOTED OTHERWISE.



**PARTIAL POWER PLAN**  
1/4" = 1'-0"



**PARTIAL REFLECTED CEILING PLAN**  
1/4" = 1'-0"

CIRC.		AMP.		POLE		LOAD		WATTS		WATTS		LOAD		POLE		AMP.		CIRC.	
1	20	1	20	1	20	OUTLETS	720	720	720	720	OUTLETS	1	20	2	20	4	20	4	20
3	20	1	20	1	20	OUTLETS	720	900	900	900	OUTLETS	1	20	4	20	4	20	4	20
5	20	1	20	1	20	OUTLETS	720	720	720	720	OUTLETS	1	20	6	20	6	20	6	20
7	20	1	20	1	20	OUTLETS	360	200	200	200	RTU-1	3	25	8	25	8	25	8	25
9	40	3	40	3	40	RTU-2 (EXISTING)	200	200	200	200	RTU-2	3	25	10	25	10	25	10	25
11	20	1	20	1	20	OUTLETS	200	200	200	200	OUTLETS	1	20	12	20	12	20	12	20
13	20	1	20	1	20	OUTLETS	200	540	540	540	OUTLETS	1	20	14	20	14	20	14	20
15	20	1	20	1	20	OUTLETS	1080	900	900	900	OUTLETS	1	20	16	20	16	20	16	20
17	20	1	20	1	20	LIGHTS	696	464	464	464	LIGHTS	1	20	18	20	18	20	18	20
19	20	1	20	1	20	LIGHTS	160	1276	1276	1276	LIGHTS	1	20	20	20	20	20	20	20
21	20	1	20	1	20	OUTLETS	720	720	720	720	OUTLETS	1	20	22	20	22	20	22	20
23	20	1	20	1	20	OUTLETS	720	720	720	720	OUTLETS	1	20	24	20	24	20	24	20
25	20	1	20	1	20	OUTLETS	720	720	720	720	OUTLETS	1	20	26	20	26	20	26	20
27	30	2	30	2	30	WATER HEATER	2250	2250	2250	2250	WATER HEATER	2	30	28	30	28	30	28	30
29	20	1	20	1	20	OUTLETS	720	720	720	720	OUTLETS	1	20	30	20	30	20	30	20

		ØA	ØB	ØC	TOTAL
CONNECTED LOAD:		8,976	10,050	9,050	28,076

LOAD TYPE	CONNECTED VA	CODE DEMAND REQ'D	TOTAL CODE MINIMUM (VA)
LIGHTING	3,596	x 125%	4,495
RECEPTACLES	7,380	x 1% 10,000 VA + 1/2 REMAINING	7,380
MOTORS	---	x 125% OF LARGEST + SUM OF REST	---
AIR CONDITIONING	12,600	x 100%	12,000
HEATING	---	x 100%	---
CONTINUOUS	---	x 125%	---
NON-CONTINUOUS	4,500	x 100%	4,500
MISC.	---	x 100%	---
SIZING LOADS		28,975 VA / 208V / 1.73 =	80.5 A

LIGHT FIXTURE SCHEDULE					
TYPE	MANUFACTURER	CATALOG NUMBER	FIXTURE WATTS	LAMPS	REMARKS
A	LITHONIA	2GT8432 A12MVOLT	116	4-32W T8	2 x 4 LAY-IN LENSED TROFFER
B	LITHONIA	C 2 96 T8 I20 GEB	116	(2) 96T8	8' STRIP LIGHT
E	LITHONIA	LHQM	115	LED	EXIT/ EMERGENCY LIGHT

**CREAL CLARK & SEIFERT**  
ARCHITECTS / ENGINEERS, I N C.  
919 Corby Street • Saint Joseph, Missouri 64501  
Phone: 816-364-2435 • Fax: 816-364-1273

OFFICE RENOVATIONS  
FOR  
**BIOZYME**  
INC.  
6010 STOCKYARDS EXPRESSWAY  
ST. JOSEPH, MISSOURI

REVISIONS:  
1  
2  
3  
4  
DRAWN BY: JAN  
CHECKED BY: TSC  
DATE: 02/06/2015



PROJECT NUMBER:  
14-303  
SHEET NUMBER:  
E1.0

Path: O:\Creal-Clark Projects\Projects 2014\14-303 Biozyme Office Renovations\14-303-E1.dwg  
Plotted by: CCS-0021  
Plot time: 2/26/2015 11:30:14 AM  
Display Name: EI