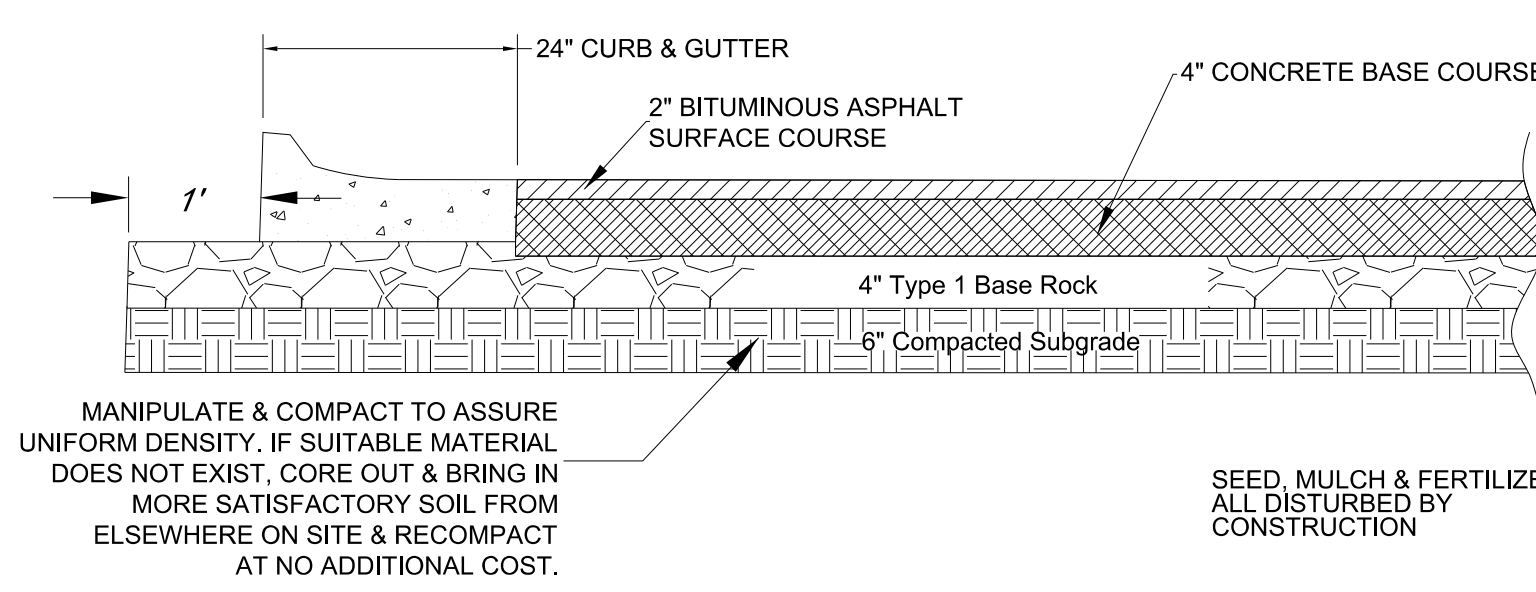
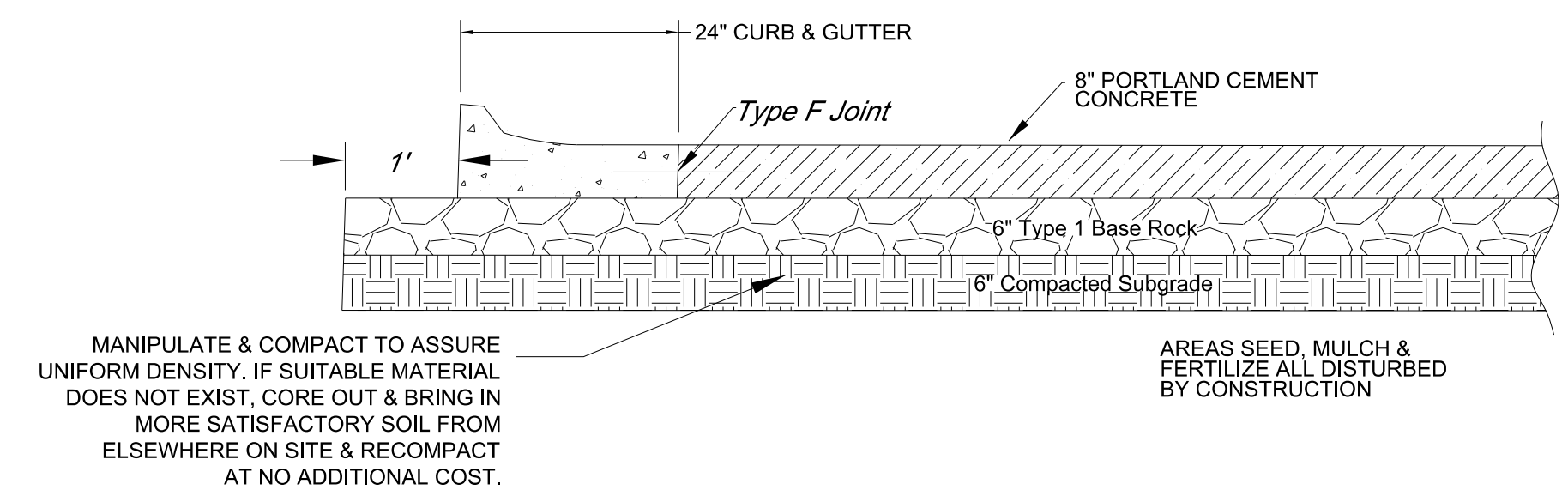
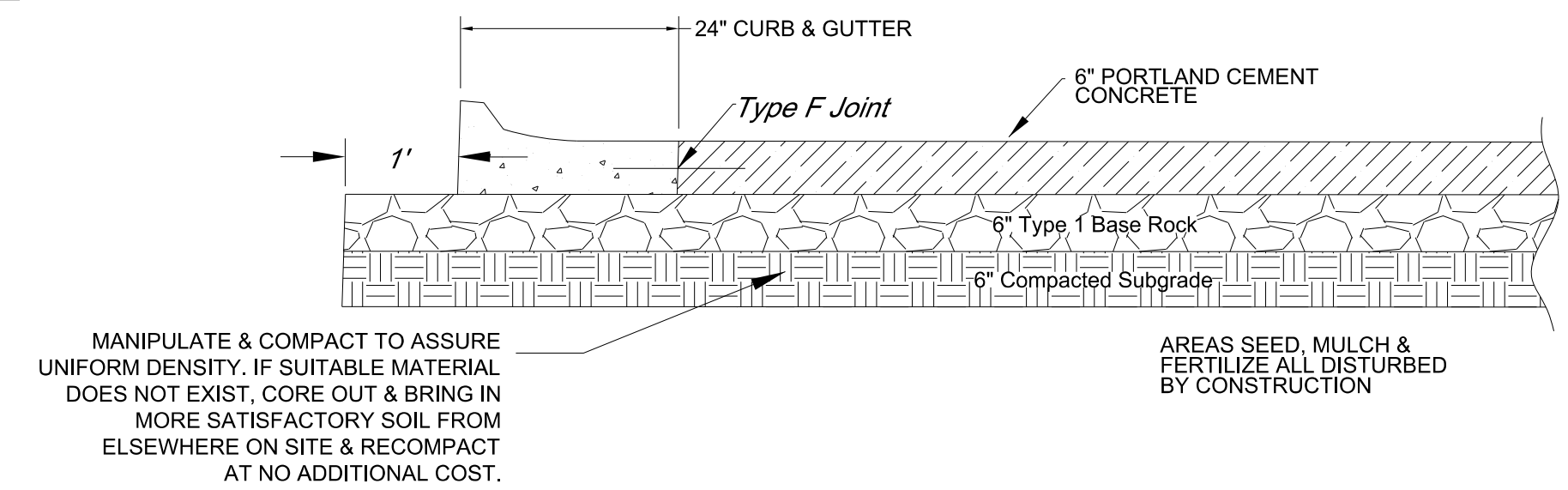
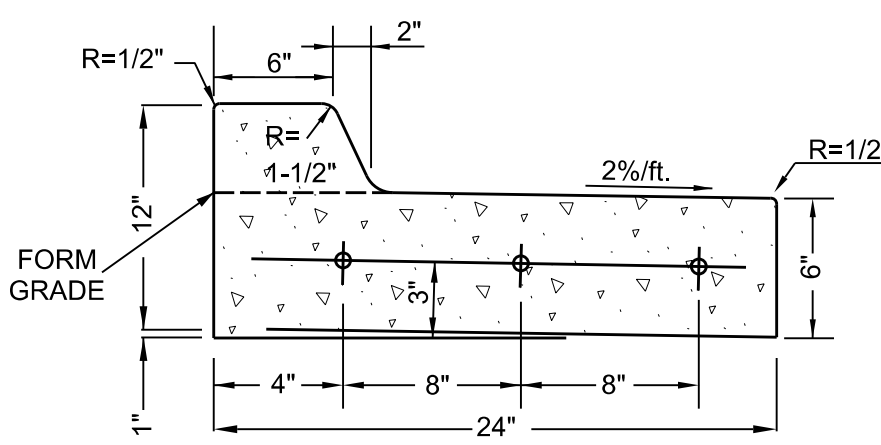
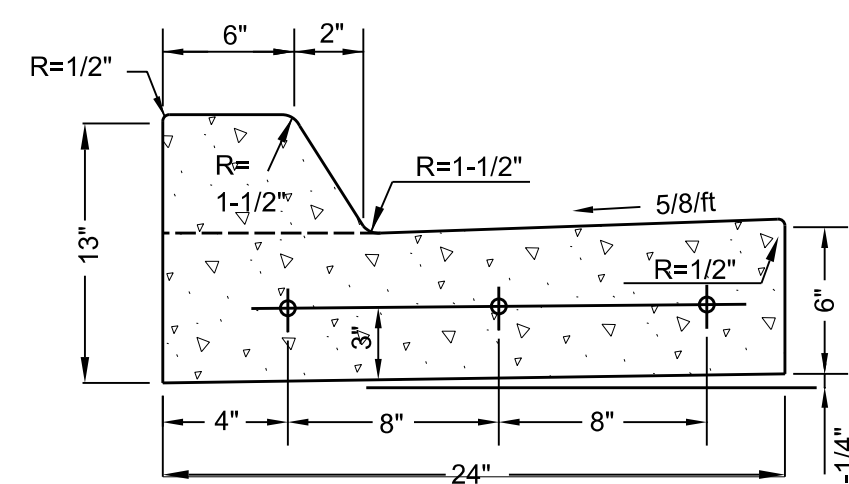


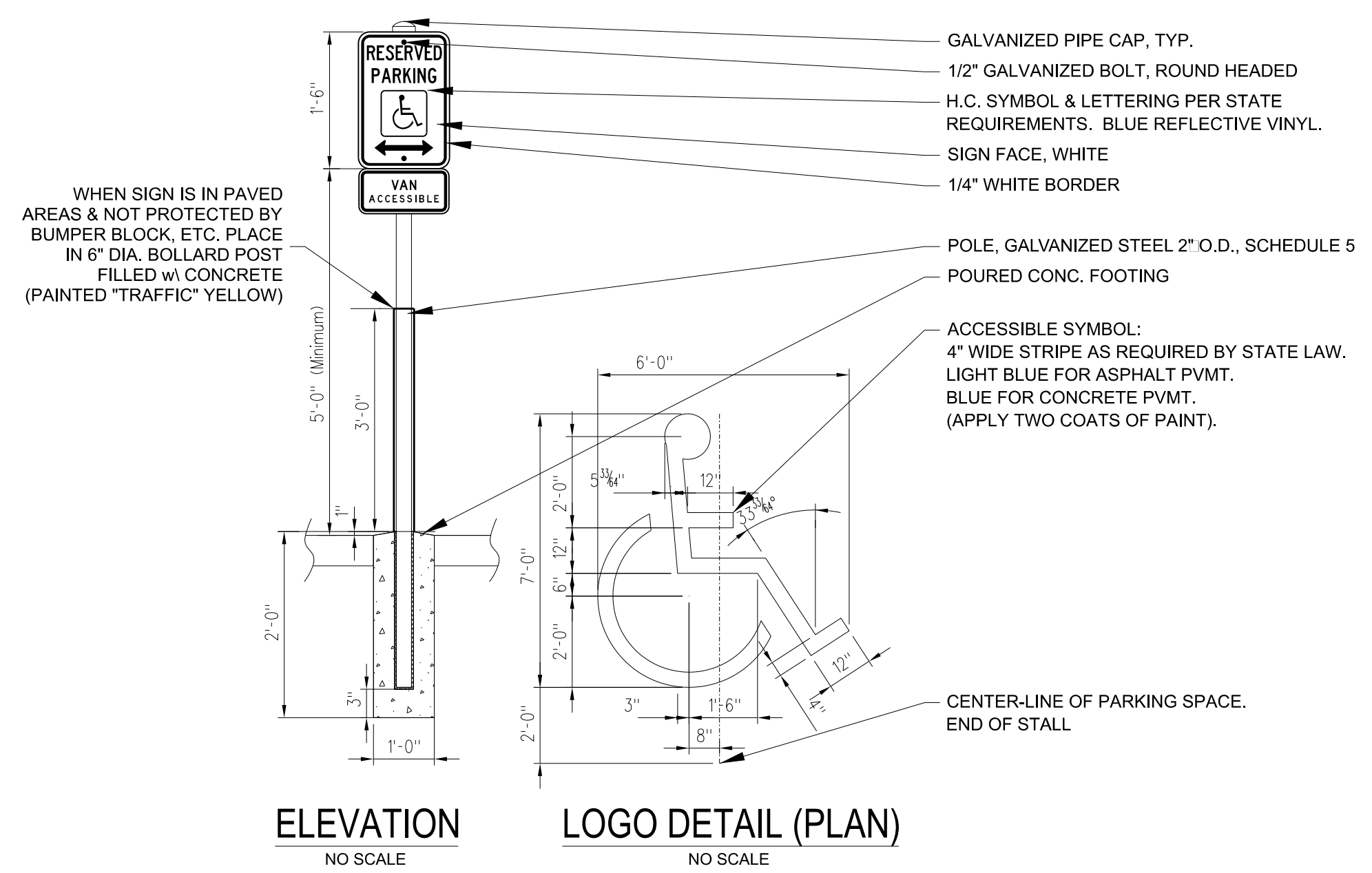
SIDEWALK NOTES:

- SIDEWALKS SHALL RECEIVE BROOM FINISH WITH 2" WIDE SMOOTH EDGING ON ALL TOOLED JOINTS. ALL JOINTS SHALL BE TOOLED AND ALL PANELS SHALL BE PICTURE FRAMED.
- SIDEWALK CONTRACTION JOINTS SHALL BE HAND TOOLED. THE SPACING OF THE JOINTS SHALL BE A MAXIMUM OF 5'.
- EXPANSION JOINTS SHALL BE PLACED AT RADIAL POINTS AND WHERE SIDEWALK ABUTS CONCRETE CURBS, DRIVEWAYS, STRUCTURE FOUNDATIONS.
- USE EXPANSION JOINTS WHEN SIDEWALKS OR PATIOS ABUT EXISTING STRUCTURES SUCH AS SIDEWALLS OF BUILDING OR COLUMNS.



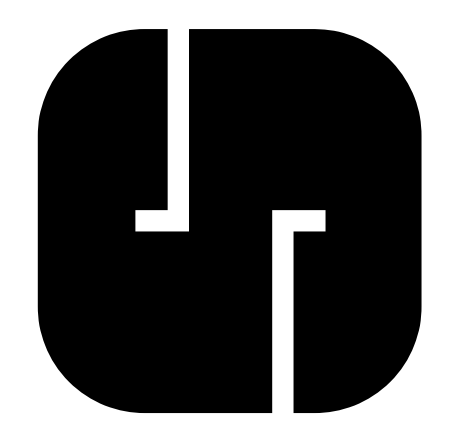
- NOTES:**
- 3/4" ISOLATION JOINTS WITH 5/8" DIA. x 2" SMOOTH DOWELS SHALL BE PLACED AT RADIUS POINTS AND AT 150' INTERVALS. THESE DOWEL BARS SHALL BE GREASED AND WRAPPED ON ONE END WITH EXPANSION TUBES.
 - 1" DEEP CONTRACTION JOINTS SHALL BE INSTALLED AT APPROXIMATELY 10' INTERVALS. THESE JOINTS SHALL PASS ACROSS THE ENTIRE CURB SECTION.
 - FIX DOWEL BARS WITH BAR SUPPORTS.
 - DEPTH OF CURB SHALL BE A MINIMUM OF 8" THROUGH THE HANDICAP ACCESS RAMP.
 - CONCRETE SHALL CONFORM TO APWA STANDARD SPECIFICATIONS SECTION 2208.2.B
 - CONCRETE STRENGTH 5000 PSI @ 28 DAY.

CURB & GUTTER DETAILS



ACCESSIBLE SIGN & SYMBOL DETAILS

ALTEC DESIGN ASSURANCE



SNYDER & ASSOCIATES
ENGINEERS & PLANNERS, INC.

SAINT JOSEPH, MISSOURI
212 N. BUCHANAN
MARYVILLE, MO 64468
802 FRANCIS STREET
ST. JOSEPH, MO 64501
660-582-8888
816-364-5222

MARK	REVISION	DATE	BY
Engineer: SD	Checked By: AM	Scale: 1"=1'	
Technician: DB	Date: 01/17	Field Bk:	
Snyder & Associates Engineers & Planners, Inc. Missouri State Certificate of Authority #200608544			Sheet C3.1